

# **SHEYENNE BLACK MAX**

## **Snowblower**



### **OWNER/OPERATOR INSTRUCTION/PARTS MANUAL**

#### **SKID-STEER AND 540 RPM TRACTOR MODELS**

<b>MODEL 550 (HYD)</b>	<b>MODEL 550 (PTO)</b>
<b>MODEL 600L (HYD)</b>	<b>MODEL 600L (PTO)</b>
<b>MODEL 600 (HYD)</b>	<b>MODEL 600 (PTO)</b>
<b>MODEL 700 (HYD)</b>	<b>MODEL 700 (PTO)</b>

**Sheyenne Tooling & Mfg.  
PO Box 647  
701 Lenham Ave. SW  
Cooperstown, ND 58425**

**www.sheyennemfg.com  
(701)797-2700 Fax (701)797-2584  
(800) 797-1883**



Dear SHEYENNE BLACK MAX Owner/Operator,

Thank you for choosing SHEYENNE BLACK MAX! We believe your SHEYENNE BLACK MAX Snowblower is the best Snowblower made in America.

Please read and study this operator's manual completely. Regular preventative maintenance and proper operation are the two most important ways to avoid costly downtime and major repairs. Included are regular maintenance steps and the safest operating techniques.

Please follow all safety instructions in this manual and become familiar with all Danger and Caution decals on your SHEYENNE BLACK MAX Snowblower. They alert you to the possible risk of injury to you or damage to the Snowblower. Your SHEYENNE BLACK MAX Snowblower was designed with your safety in mind.

As manufacturer of the SHEYENNE BLACK MAX Snowblower, our most important goal is for every owner/operator to be 100% satisfied.

THANK YOU AGAIN FOR CHOOSING SHEYENNE BLACK MAX  
SNOWBLOWER!

**FARM-COMMERCIAL-INDUSTRIAL**



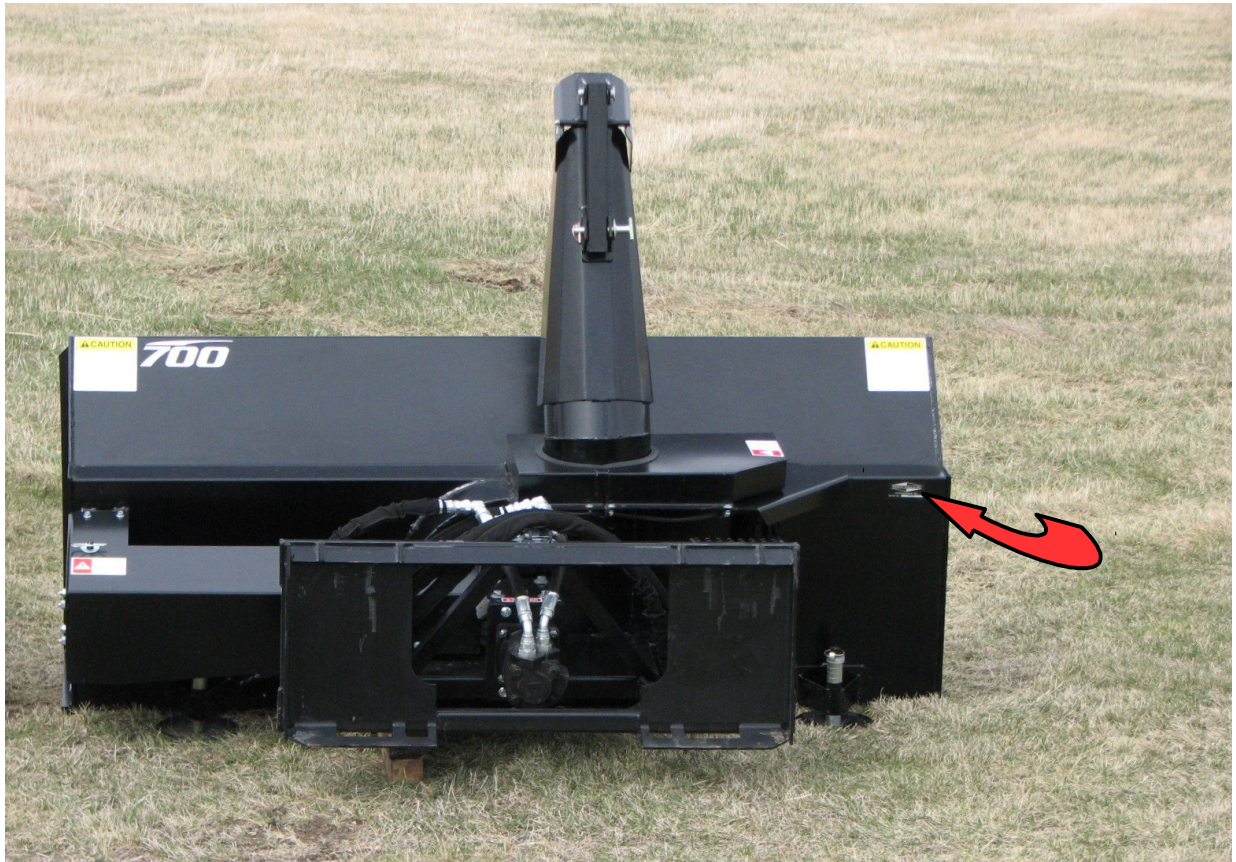




## SERIAL NUMBER LOCATION

Always give your dealer the serial number of your Black Max snow blower when ordering parts, requesting service or for information.

The serial number plate is located where indicated below. Please mark this number and other information in the spaces provided. It will be useful for future reference.



Model Number \_\_\_\_\_

Serial Number \_\_\_\_\_

Production Year \_\_\_\_\_



Please enter information below and **SAVE FOR FUTURE REFERENCE**

## SNOWBLOWER WARRANTY

SHEYENNE TOOLING & MANUFACTURING warrants each new product to be free from defects in material and workmanship. This warranty is applicable only for the normal service life expectancy of the machine or components, not to exceed twelve consecutive months from the date of delivery of the new SHEYENNE TOOLING & MANUFACTURING product to the original purchaser.

Genuine SHEYENNE TOOLING & MANUFACTURING replacement parts and components will be warranted for 90 days from date of purchase, or the remainder of the original equipment warranty period, whichever is longer.

Under no circumstances will it cover any merchandise or components thereof, which in the opinion of the company, has been subject to negligent handling, misuse, alteration, an accident, or if repairs have been made with parts other than those obtainable through SHEYENNE TOOLING & MANUFACTURING.

Our obligation under this warranty shall be limited to repairing or replacing, free of charge to the original purchaser, any part that in our judgment shall show evidence of such defect, provided further that such part shall be returned within thirty (30) days from date of failure to SHEYENNE TOOLING & MANUFACTURING.

This warranty shall not be interpreted to render us liable for injury or damages of any kind or nature to person or property.

Except as set forth above, **SHEYENNE TOOLING & MANUFACTURING shall have no obligation of liability of any kind on account of any of its equipment and shall not be liable for special or consequential damage. SHEYENNE TOOLING & MANUFACTURING makes no other warranty, express or implied, and, specifically, SHEYENNE TOOLING & MANUFACTURING disclaims any implied warranty of merchantability of fitness for a particular purpose. Some states or provinces do not permit limitations or exclusions of implied warranties of incidental or consequential damages, so the limitations or exclusions in this warranty may not apply.**

This warranty is subject to any existing conditions of supply, which may directly affect our ability to obtain materials or manufacture replacement parts.

SHEYENNE TOOLING & MANUFACTURING reserves the right to make improvements in design or changes in specifications at any time, without incurring any obligations to owners of units previously sold.

No one is authorized to alter, modify or enlarge neither this warranty nor the exclusions, limitations and reservations.

I have read and understand the above instructions and warranty. **Warranty is invalid until all three copies are completed and signed. Customer copy retained, dealer copy in dealer's possession and manufacturer's copy returned.**

---

Date Purchased \_\_\_\_\_

Dealership \_\_\_\_\_

Model Number \_\_\_\_\_

Serial Number \_\_\_\_\_

Customer Signature \_\_\_\_\_

Date \_\_\_\_\_

Dealer Signature \_\_\_\_\_

Date \_\_\_\_\_

**Customer Copy**



Please enter information below and **SAVE FOR FUTURE REFERENCE**

## SNOWBLOWER WARRANTY

SHEYENNE TOOLING & MANUFACTURING warrants each new product to be free from defects in material and workmanship. This warranty is applicable only for the normal service life expectancy of the machine or components, not to exceed twelve consecutive months from the date of delivery of the new SHEYENNE TOOLING & MANUFACTURING product to the original purchaser.

Genuine SHEYENNE TOOLING & MANUFACTURING replacement parts and components will be warranted for 90 days from date of purchase, or the remainder of the original equipment warranty period, whichever is longer.

Under no circumstances will it cover any merchandise or components thereof, which in the opinion of the company, has been subject to negligent handling, misuse, alteration, an accident, or if repairs have been made with parts other than those obtainable through SHEYENNE TOOLING & MANUFACTURING.

Our obligation under this warranty shall be limited to repairing or replacing, free of charge to the original purchaser, any part that in our judgment shall show evidence of such defect, provided further that such part shall be returned within thirty (30) days from date of failure to SHEYENNE TOOLING & MANUFACTURING.

This warranty shall not be interpreted to render us liable for injury or damages of any kind or nature to person or property.

Except as set forth above, **SHEYENNE TOOLING & MANUFACTURING shall have no obligation of liability of any kind on account of any of its equipment and shall not be liable for special or consequential damage. SHEYENNE TOOLING & MANUFACTURING makes no other warranty, express or implied, and, specifically, SHEYENNE TOOLING & MANUFACTURING disclaims any implied warranty of merchantability of fitness for a particular purpose. Some states or provinces do not permit limitations or exclusions of implied warranties of incidental or consequential damages, so the limitations or exclusions in this warranty may not apply.**

This warranty is subject to any existing conditions of supply, which may directly affect our ability to obtain materials or manufacture replacement parts.

SHEYENNE TOOLING & MANUFACTURING reserves the right to make improvements in design or changes in specifications at any time, without incurring any obligations to owners of units previously sold.

No one is authorized to alter, modify or enlarge neither this warranty nor the exclusions, limitations and reservations.

I have read and understand the above instructions and warranty. **Warranty is invalid until all three copies are completed and signed. Customer copy retained, dealer copy in dealer's possession and manufacturer's copy returned.**

---

Date Purchased \_\_\_\_\_

Dealership \_\_\_\_\_

Model Number \_\_\_\_\_

Serial Number \_\_\_\_\_

Customer Signature \_\_\_\_\_

Date \_\_\_\_\_

Dealer Signature \_\_\_\_\_

Date \_\_\_\_\_

**Dealer Copy**





**Manufacturer Copy**

**PLEASE ENTER INFORMATION BELOW AND RETURN TO SHEYENNE TOOLING AND MANUFACTURING**

## **SNOWBLOWER WARRANTY**

**SHEYENNE TOOLING & MANUFACTURING warrants each new product to be free from defects in material and workmanship. This warranty is applicable only for the normal service life expectancy of the machine or components, not to exceed twelve consecutive months from the date of delivery of the new SHEYENNE TOOLING & MANUFACTURING product to the original purchaser.**

Genuine SHEYENNE TOOLING & MANUFACTURING replacement parts and components will be warranted for 90 days from date of purchase, or the remainder of the original equipment warranty period, whichever is longer. Warranty is not applicable for normal wear and usage.

Under no circumstances will it cover any merchandise or components thereof, which in the opinion of the company, has been subject to negligent handling, misuse, alteration, an accident, or if repairs have been made with parts other than those obtainable through SHEYENNE TOOLING & MANUFACTURING.

Our obligation under this warranty shall be limited to repairing or replacing, free of charge to the original purchaser, any part that in our judgement shall show evidence of such defect, provided further that such part shall be returned within thirty (30) days from date of failure to SHEYENNE TOOLING & MANUFACTURING.

This warranty shall not be interpreted to render us liable for injury or damages of any kind or nature to person or property.

Except as set forth above, SHEYENNE TOOLING & MANUFACTURING shall have no obligation of liability of any kind on account of any of its equipment and shall not be liable for special or consequential damage. SHEYENNE TOOLING & MANUFACTURING makes no other warranty, express or implied, and, specifically, SHEYENNE TOOLING & MANUFACTURING disclaims any implied warranty of merchantability of fitness for a particular purpose. Some states or provinces do not permit limitations or exclusions of implied warranties of incidental or consequential damages, so the limitations or exclusions in this warranty may not apply.

This warranty is subject to any existing conditions of supply, which may directly affect our ability to obtain materials or manufacture replacement parts.

SHEYENNE TOOLING & MANUFACTURING reserves the right to make improvements in design or changes in specifications at any time, without incurring any obligations to owners of units previously sold.

No one is authorized to alter, modify or enlarge neither this warranty nor the exclusions, limitations and reservations.

I have read and understand the above instructions and warranty. I have also read the owner's manual and understand all safety precautions. **Warranty is invalid until all three copies are completed and signed. Customer copy retained, dealer copy in the dealer's possession and the manufacturer's copy returned.**

Date Purchased \_\_\_\_\_ Dealership \_\_\_\_\_

Model Number \_\_\_\_\_ Serial Number \_\_\_\_\_

Customer Information: Name (Please Print) \_\_\_\_\_

Address \_\_\_\_\_

City \_\_\_\_\_, State \_\_\_\_\_, Zip Code \_\_\_\_\_

E-Mail (If Applicable) \_\_\_\_\_

Signature \_\_\_\_\_, Date \_\_\_\_\_

Dealer Signature \_\_\_\_\_

Date \_\_\_\_\_

*Please return via; fax, regular mail or e-mail; to:*  
*fax number – (701) 797-2584*  
*address --*  
**Sheyenne Tooling and Manufacturing**  
**PO Box 647**  
**Cooperstown, ND 58425**  
*e-mail – [warranty@sheyennemfg.com](mailto:warranty@sheyennemfg.com)*







# **SAFETY**

Sheyenne Tooling & Mfg. has designed this Snowblower with safety as the main concern. Please read the following safety information before you operate this machine. In addition, make sure every individual, who will operate or work with this machine, is familiar with these safety precautions.

The use of the words CAUTION, WARNING, or DANGER on the machine signals three degrees of hazards. CAUTION is used for general reminders of good safety practices or direct attention to unsafe Practices. WARNING is used to denote a SPECIFIC POTENTIAL HAZARD. DANGER is used to denote the MOST SERIOUS OF HAZARDS!

## **GENERAL SAFETY**

1. Make sure all the SAFETY SIGNS are readable and in good condition.
2. Know how to shut off the machine before starting.
3. Make sure the machine is clear of loose or foreign objects (tools, branches, rocks etc.)
4. Never attempt to service the machine or driveline while the unit is still engaged and running.
5. Keep children, pets and spectators away from the machine at all times.
6. Keep hands, feet and loose clothing away from moving or power-driven parts.
7. DO NOT step on or climb over the machine for any reason.
8. Keep all guards and shields in place and in good working condition to assure top performance and maximum safety.
9. Rotating components can catch hands and feet STAND CLEAR of these areas.
10. NEVER allow anyone to ride on the Snowblower.
11. Before servicing or inspecting the Snowblower, turn off the Skidsteer engine and remove the key.
12. FAILURE TO FOLLOW SAFETY INSTRUCTIONS COULD RESULT IN SERIOUS *INJURY OR EVEN DEATH TO THE OPERATOR OR SPECTATORS!*

## **Operation Safety (HYDRAULIC MODELS)**

1. Disengage Hydraulics, stop engine, and remove the key whenever you leave the tractor seat.
2. Disengage Hydraulics, stop engine, and remove the key after striking a foreign object. Thoroughly inspect the snowblower before restarting the unit.
3. Disengage Hydraulics, stop engine, and remove the key before attempting to service your snowblower or unplug the blower and spout.
4. Do not rotate the spout so the discharge material will be directed toward people, your tractor, or any other object that could be damaged.
5. Rotating components can catch feet, hands, and loose clothing. Stand clear of all moving parts.
6. Do not climb or step on or over the snowblower for any reason.
7. Never operate the snowblower in bad light or poor visibility.
8. Read and understand every Safety Sign on your machine.
9. Do not bulldoze! Let the machine blow the snow...do not push the snow.
10. Know your surroundings. Know the area you are removing the snow from.
11. Do not allow anyone to ride on the snowblower at any time.
12. Keep all shields in place. Your safety is involved.

## **Preparation**

# **OPERATING THE SNOWBLOWER (HYDRAULIC MODELS)**

## **PRELIMINARY CHECK**

Make sure HYDRAULICS are disengaged, engine shut off and the key removed.

All bearings have been pre-greased at the factory, but it is a good practice to re-grease them to remove any moisture that may have accumulated. Use your owner's manual as a reference for the following simple steps:

1. Grease all zerks:
  - a) One on each end of auger.
2. Check chain tightness.
3. The auger drive chain is tighten by adjusting the idler sprocket, Item # 25, shown on pages 9 & 10. Properly adjusted, the chain should move up & down approximately one half inch.
4. Check oil level in gearbox, if oil is needed use SAE 80/90 gear oil.
5. Mount electric control box in a convenient location.
6. Attach red lead to nearest point of 12 VDC. Make sure control box is grounded.

As with any new piece of equipment, it is a good idea to give the unit a preliminary check before you begin to blow snow. Run the BLACK MAX SNOWBLOWER for a short period, then turn off the Hydraulic motor, turn off the engine and remove the key. Make a careful inspection for loose bolts, roller chain alignment, binding parts, or any other irregularities. Correct any problems that may have occurred. A simple preliminary check may save you time and money by finding a small problem that might be a major problem in a snowstorm.

## **OPERATING YOUR BLACK MAX SNOWBLOWER**

Make sure the fan and augers are free of any loose objects. Check to see if all the shields and guards are in place and in good condition. Lubricate the snowblower after each use.

The most effective method of moving snow is to blow the snow as high as possible downwind, if room permits. The spout deflector will allow you to adjust the height that the snow is blown. Reducing the engine speed will reduce the distance the snow is blown and the force of the discharge will be less.

Always be aware of where you are blowing the snow. **DO NOT BLOW** the snow toward buildings, livestock, the skidsteer, or any other object that may be damaged.

**DO NOT CHANGE** the spout direction while snow is being discharged. This may cause damage to the spout and the deflector.

## **Operation Safety (PTO MODELS)**

1. Disengage PTO, stop engine, and remove the key whenever you leave the tractor seat.
2. Disengage PTO, stop engine, and remove the key after striking a foreign object. Thoroughly inspect the snowblower before restarting the unit.
3. Disengage PTO, stop engine, and remove the key before attempting to service your snowblower or unplug the blower and spout.
4. Do not rotate the spout so the discharge material will be directed toward people, your tractor, or any other object that could be damaged.
5. Rotating components can catch feet, hands, and loose clothing. Stand clear of all moving parts.
6. Do not climb or step on or over the snowblower for any reason.
7. Never operate the snowblower in bad light or poor visibility.
8. Read and understand every Safety Sign on your machine.
9. Do not bulldoze! Let the machine blow the snow...do not push the snow.
10. Know your surroundings. Know the area you are removing the snow from.
11. Do not allow anyone to ride on the snowblower at any time.
12. Keep all shields in place. Your safety is involved.

## **Preparation**

Make sure PTO is disengaged, engine shut off and the key removed.

All bearings have been pre-greased at the factory, but it is a good practice to re-grease them to remove any moisture that may have accumulated. Use your owner's manual as a reference for the following simple steps:

1. Grease all zerks:
  - a) One on each end of auger.
  - b) PTO universal joints.
2. Check chain tightness.
3. The auger drive chain is tightened by adjusting the idler sprocket, Item #25, shown on pages 9 & 10. Properly adjusted, the chain should move up & down approximately one half inch.
4. Check oil level in gearbox, if oil is needed use SAE 80/90 gear oil.
5. Mount electric control box in a convenient location.
6. Attach red lead to nearest point of 12 VDC. Make sure control box is grounded.

# **OPERATING THE SNOWBLOWER (PTO MODELS)**

## **PRELIMINARY CHECK**

As with any new piece of equipment, it is a good idea to give the unit a preliminary check before you begin to blow snow. Run the BLACK MAX SNOWBLOWER for a short period, disengage PTO, turn off the engine and remove the key. Make a careful inspection for loose bolts, roller chain alignment, binding parts, or any other irregularities. Correct any problems that may have occurred. A simple preliminary check may save you time and money by finding a small problem that might be a major problem in a snowstorm.

## **OPERATING YOUR BLACK MAX SNOWBLOWER**

Make sure the fan and augers are free of any loose objects. Check to see if all the shields and guards are in place and in good condition. Lubricate the snowblower after each use.

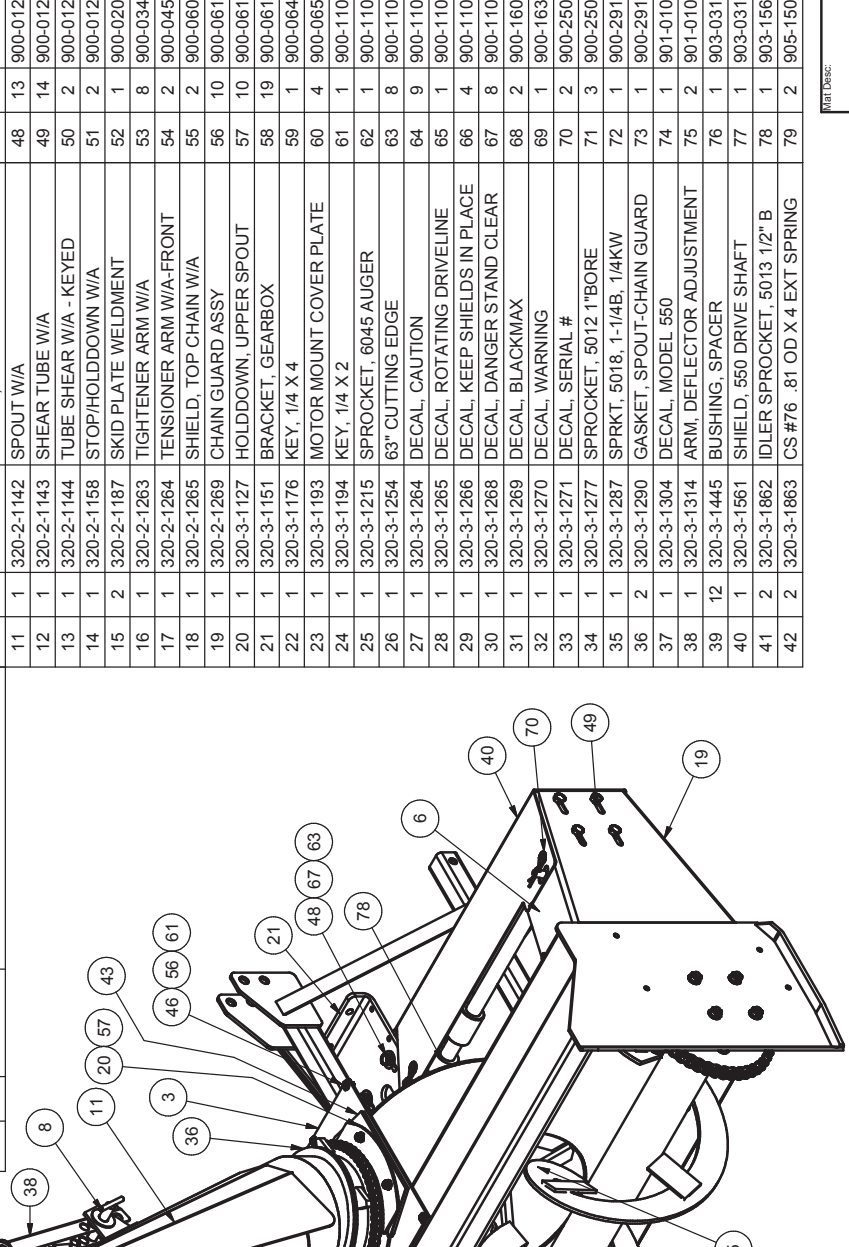
The most effective method of moving snow is to blow the snow as high as possible downwind, if room permits. The spout deflector will allow you to adjust the height that the snow is blown. Reducing the engine speed will reduce the distance the snow is blown and the force of the discharge will be less.

Always be aware of where you are blowing the snow. **DO NOT BLOW** the snow toward buildings, livestock, the skidsteer, or any other object that may be damaged.

**DO NOT CHANGE** the spout direction while snow is being discharged. This may cause damage to the spout and the deflector.

320-0-0550 1 2 3 4

Parts List		Parts List		Parts List	
ITEM QTY	PART #	DESCRIPTION	ITEM QTY	PART #	DESCRIPTION
1	320-2-1036	PIN W/A, HYD. CYLINDER	6	320-2-1060	DRIVE SHAFT W/A, 550
2	320-2-1042	SPOUT CHAIN GUARD W/A - LH	7	320-2-1065	ELEC. MOTOR ASSEMBLY
3	320-2-1056	FRAME W/A, MAIN -550L	8	320-2-1091	PIN W/A, LWR SPOUT ADJUST.
4	320-2-1068	AUGER W/A, 550	9	320-2-1126	DEFLECTOR W/A, FORMED
5	320-2-1059	BLOWER FAN W/A-550L	10	320-2-1129	PIN W/A, DEFL. HINGE
			11	320-2-1142	SPOUT W/A
			12	320-2-1143	SHEAR TUBE W/A
			13	320-2-1144	TUBE SHEAR W/A - KEYED
			14	320-2-1158	STOP/HOLDDOWN W/A
			15	320-2-1187	SKID PLATE WELDMENT
			16	320-2-1263	TIGHTENER ARM W/A
			17	320-2-1264	TENSIONER ARM W/A-FRONT
			18	320-2-1265	SHIELD, TOP CHAIN W/A
			19	320-2-1269	CHAIN GUARD ASSY
			20	320-3-1127	HOLDDOWN, UPPER SPOUT
			21	320-3-1151	BRACKET, GEARBOX
			22	320-3-1176	KEY, 1/4 X 4
			23	320-3-1193	MOTOR MOUNT COVER PLATE
			24	320-3-1194	KEY, 1/4 X 2
			25	320-3-1215	SPROCKET, 6045 AUGER
			26	320-3-1254	63" CUTTING EDGE
			27	320-3-1264	DECAL, CAUTION
			28	320-3-1265	DECAL, ROTATING DRIVELINE
			29	320-3-1266	DECAL, KEEP SHIELDS IN PLACE
			30	320-3-1268	DECAL, DANGER STAND CLEAR
			31	320-3-1269	DECAL, BLACKMAX
			32	320-3-1270	DECAL, WARNING
			33	320-3-1271	DECAL, SERIAL #
			34	320-3-1277	SPROCKET, 5012 1"BORE
			35	320-3-1287	SPRKT, 5018, 1-1/4B, 1/4KW
			36	320-3-1290	GASKET, SPOUT-CHAIN GUARD
			37	320-3-1304	DECAL, MODEL 550
			38	320-3-1314	ARM, DEFLECTOR ADJUSTMENT
			39	320-3-1445	BUSHING, SPACER
			40	320-3-1561	SHIELD, 550 DRIVE SHAFT
			41	320-3-1862	IDLER SPROCKET, 5013 1/2" B
			42	320-3-1863	CS #76 .81 OD X 4 EXT SPRING



550

Parts List		Parts List		Parts List	
ITEM QTY	PART #	DESCRIPTION	ITEM QTY	PART #	DESCRIPTION
43	320-3-1868	HOLDDOWN, SPACER	43	320-3-1868	HOLDDOWN, SPACER
44	320-3-1870	BUSHING	44	320-3-1870	BUSHING
45	6905346	WASHER	45	6905346	WASHER
46	900-01005	1/4-20 X 3/4 GR 5 HHCS	46	900-01005	1/4-20 X 3/4 GR 5 HHCS
47	900-01111	3/8-16 X 1-1/4 GR 5 HHCS	47	900-01111	3/8-16 X 1-1/4 GR 5 HHCS
48	900-01223	1/2-13 X 1-1/4 GR 5 HHCS	48	900-01223	1/2-13 X 1-1/4 GR 5 HHCS
49	900-01225	1/2NC X 1-1/2 HEX BOLT G5	49	900-01225	1/2NC X 1-1/2 HEX BOLT G5
50	900-01227	1/2 X 1-3/4 GR 5 HHCS	50	900-01227	1/2 X 1-3/4 GR 5 HHCS
51	900-01233	1/2-13 X 2-1/2 GR 5 HHCS ZP	51	900-01233	1/2-13 X 2-1/2 GR 5 HHCS ZP
52	900-02054	5/16NC X 1-1/4 HHCS GR 2	52	900-02054	5/16NC X 1-1/4 HHCS GR 2
53	900-03438	3/8-16 X 1 SERR FLG BOLT	53	900-03438	3/8-16 X 1 SERR FLG BOLT
54	900-04550	1/4 X 3 OAL Eyebolt	54	900-04550	1/4 X 3 OAL Eyebolt
55	900-06001	1/4" HEX NUT	55	900-06001	1/4" HEX NUT
56	900-06135	1/4" SERR. FLANGE NUT	56	900-06135	1/4" SERR. FLANGE NUT
57	900-06139	3/8 NC SERR FLANGE NUT	57	900-06139	3/8 NC SERR FLANGE NUT
58	900-06143	1/2 NC SERR FLANGE NUT	58	900-06143	1/2 NC SERR FLANGE NUT
59	900-06498	5/16NC HEX TOPLOCK NUT	59	900-06498	5/16NC HEX TOPLOCK NUT
60	900-06588	1/2 Std NC N/lock Nut	60	900-06588	1/2 Std NC N/lock Nut
61	900-11009	1/4" LOCK WASHER	61	900-11009	1/4" LOCK WASHER
62	900-11011	3/8 LOCKWASHER	62	900-11011	3/8 LOCKWASHER
63	900-11013	1/2" SPLIT LOCK WASHER	63	900-11013	1/2" SPLIT LOCK WASHER
64	900-11031	1/4 FLATWASHER	64	900-11031	1/4 FLATWASHER
65	900-11033	3/8 USS FLATWASHER	65	900-11033	3/8 USS FLATWASHER
66	900-11034	7/16 USS FLAT WASHER	66	900-11034	7/16 USS FLAT WASHER
67	900-11035	1/2" USS FLATWASHER	67	900-11035	1/2" USS FLATWASHER
68	900-16015	5/16NCX3/4 SQ HD SET SCREW	68	900-16015	5/16NCX3/4 SQ HD SET SCREW
69	900-16329	SET SCREW, 1/4NCX3/8	69	900-16329	SET SCREW, 1/4NCX3/8
70	900-25005	R HITCH PIN #9	70	900-25005	R HITCH PIN #9
71	900-25012	7/16 x 1 3/4 Lynch Pin	71	900-25012	7/16 x 1 3/4 Lynch Pin
72	900-29126	3/16 X 3/4 ROLL PIN	72	900-29126	3/16 X 3/4 ROLL PIN
73	900-29174	1/4 X 1 ROLL PIN	73	900-29174	1/4 X 1 ROLL PIN
74	901-01005	1-1/4" 4 BOLT FLANGE BRG	74	901-01005	1-1/4" 4 BOLT FLANGE BRG
75	901-01006	1-1/2 4 BOLT FLANGE BRG	75	901-01006	1-1/2 4 BOLT FLANGE BRG
76	903-03134	CHAIN 60-1X92	76	903-03134	CHAIN 60-1X92
77	903-03136	CHAIN, 50-1X86P+CONN LINK	77	903-03136	CHAIN, 50-1X86P+CONN LINK
78	903-15616	GEAR BOX, R500	78	903-15616	GEAR BOX, R500
79	905-15024	1/4-28 UNF ST Zerk	79	905-15024	1/4-28 UNF ST Zerk

**REV** | **DESCRIPTION** | **DATE** | **APPROVED**

A	REMOVED 320-2-1037, -2-1040, -2-1041, -2-1064, -2-1141, 320-3-1127, -3-1196, -3-1286, -3-1601, 900-11073, -11183, ADDED 320-2-1263, -2-1264, -2-1265, -2-1269, 320-3-1127, -3-1862, -3-1863, -3-1868, -3-1870, 6905346, 900-01227, -01233, -02054, -04550, -06001, -06143, -11034	8/9/2011	RS
---	---	----------	----

**REV** | **DESCRIPTION** | **DATE** | **APPROVED**

A	550L SNOWBLOWER ASSY	3/3/2005	RS
---	----------------------	----------	----

320-0-0550 SHEET 1 OF 2

718 S. LANTANA AVE.  
COLUMBIANA, ND 58425  
PHONE: 701-797-2504  
FAX: 701-797-2504

**Shawnee Tooling & Mfg.**

TITLE: 550L SNOWBLOWER ASSY  
DWG NO.: 320-0-0550  
DATE: 3/3/2005  
DRAWN BY: RS  
CHECKED BY: A  
SIZE: B

All Dimensions are in inches and the tolerance applied is as follows unless otherwise noted.  
X.XX = +/- .000  
X.XXX = +/- .010  
Angles = +/- .1

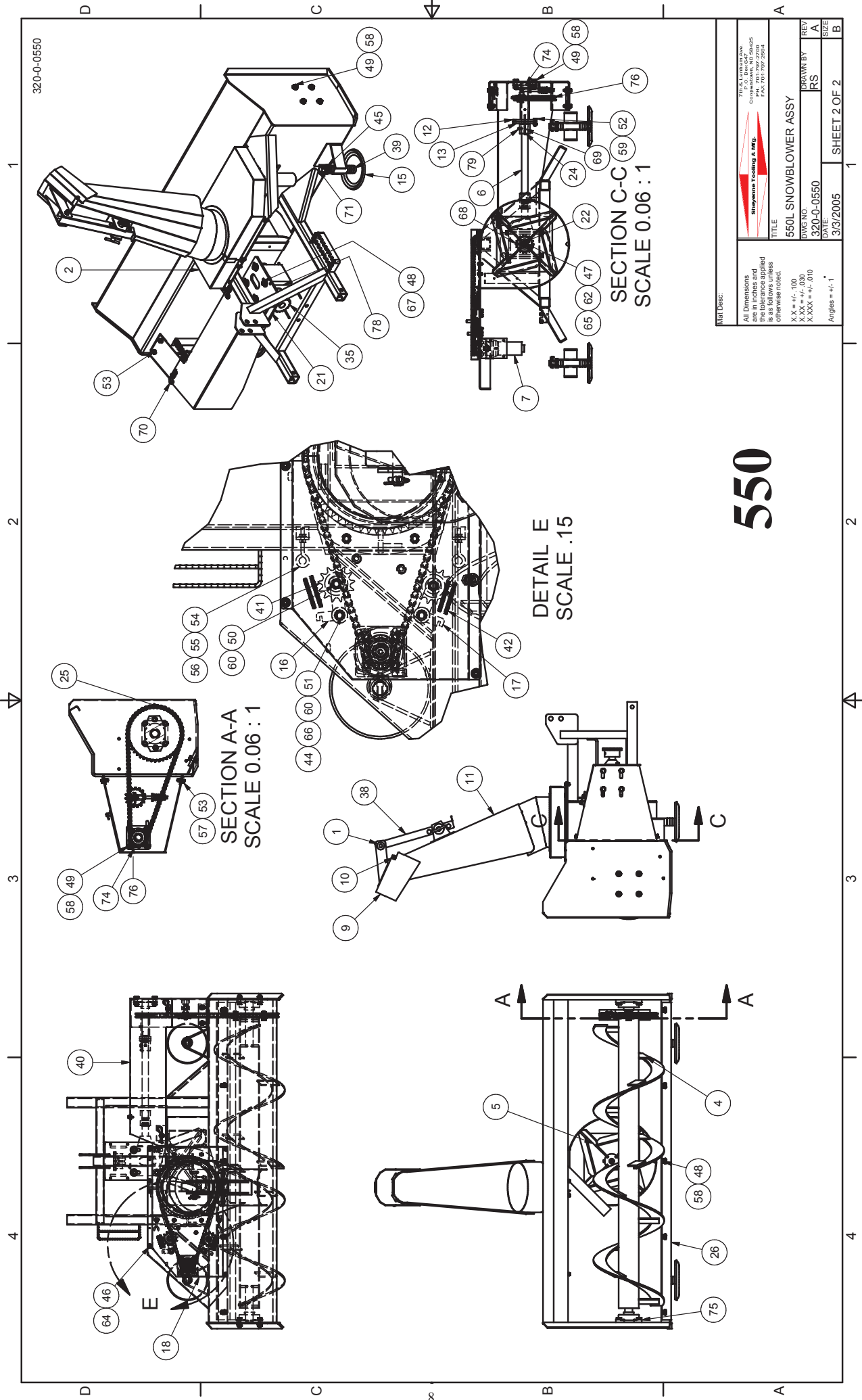
REVISION HISTORY

REV	DESCRIPTION	DATE	APPROVED
A	REMOVED 320-2-1037, -2-1040, -2-1041, -2-1064, -2-1141, 320-3-1127, -3-1196, -3-1286, -3-1601, 900-11073, -11183, ADDED 320-2-1263, -2-1264, -2-1265, -2-1269, 320-3-1127, -3-1862, -3-1863, -3-1868, -3-1870, 6905346, 900-01227, -01233, -02054, -04550, -06001, -06143, -11034	8/9/2011	RS

1 2 3 4



320-0-0550



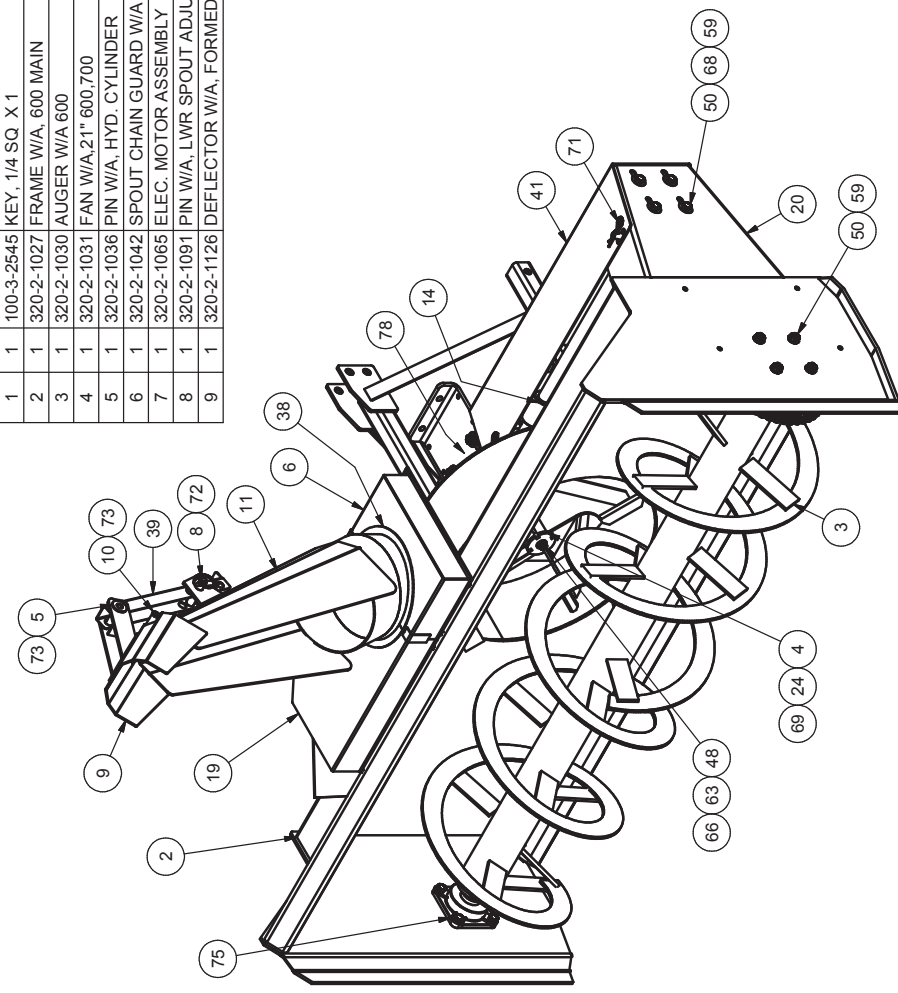
# 550

<small>711 S. LANTANA AVE. COLUMBIANA, ND 58425 PHONE: 701-797-2504 FAX: 701-797-2504</small>	
<b>TITLE</b> 550L SNOWBLOWER ASSY	
<b>DWG. NO.</b> 320-0-0550	<b>DRAWN BY</b> RS
<b>DATE:</b> 3/3/2005	<b>REV</b> A
<b>SIZE</b> B	<b>SHEET 2 OF 2</b>

**NOTE:**  
All dimensions are in inches and the tolerance applied is as follows unless otherwise noted.  
X.X = +/- .100  
X.XX = +/- .030  
X.XXX = +/- .010  
Angles = +/- 1°

320-0-0600

Parts List			Parts List			Parts List					
ITEM	QTY	PART #	DESCRIPTION	ITEM	QTY	PART #	DESCRIPTION	ITEM	QTY	PART #	DESCRIPTION
1	1	100-3-2545	KEY, 1/4 SQ X 1	10	1	320-2-1129	PIN W/A, DEFL. HINGE	43	2	320-3-1863	CS #76 .81 OD X 4 EXT SPRING
2	1	320-2-1027	FRAME W/A, 600 MAIN	11	1	320-2-1142	SPOUT W/A	44	2	320-3-1868	HOLDDOWN, SPACER
3	1	320-2-1030	AUGER W/A 600	12	1	320-2-1143	SHEAR TUBE W/A	45	2	320-3-1870	BUSHING
4	1	320-2-1031	FAN W/A, 2 1/4" 600 700	13	1	320-2-1144	TUBE SHEAR W/A - KEYED	46	12	6905346	WASHER
5	1	320-2-1036	PIN W/A, HYD. CYLINDER	14	1	320-2-1145	DRIVE SHAFT W/A 600-600L	47	9	900-01005	1/4-20 X 3/4 GR 5 HHCS
6	1	320-2-1042	SPOUT CHAIN GUARD W/A - LH	15	1	320-2-1158	STOP/HOLDDOWN W/A	48	1	900-01111	3/8-16 X 1-1/4 GR 5 HHCS
7	1	320-2-1065	ELEC. MOTOR ASSEMBLY	16	2	320-2-1187	SKID PLATE WELDMENT	49	13	900-01223	1/2-13 X 1-1/4 GR 5 HHCS
8	1	320-2-1091	PIN W/A, LWR SPOUT ADJUST.	17	1	320-2-1263	TIGHTENER ARM W/A	50	14	900-01225	1/2NC X 1-1/2 HEX BOLT G5
9	1	320-2-1126	DEFLECTOR W/A, FORMED	18	1	320-2-1264	TENSIONER ARM W/A-FRONT	51	2	900-01227	1/2 X 1-3/4 GR 5 HHCS
				19	1	320-2-1265	SHIELD, TOP CHAIN W/A	52	2	900-01233	1/2-13 X 2-1/2 GR 5 HHCS ZP
				20	1	320-2-1269	CHAIN GUARD ASSY	53	1	900-02054	5/16NC X 1-1/4 HHCS GR 2
				21	1	320-3-1127	HOLDDOWN, UPPER SPOUT	54	8	900-03438	3/8-16 X 1 SERR FLG BOLT
				22	1	320-3-1151	BRACKET, GEARBOX	55	2	900-04550	1/4 X 3 Eyebolt
				23	1	320-3-1160	73" CUTTING EDGE	56	2	900-06001	1/4" HEX NUT
				24	1	320-3-1176	KEY, 1/4 X 4	57	10	900-06135	1/4" SERR. FLANGE NUT
				25	1	320-3-1193	MOTOR MOUNT COVER PLATE	58	11	900-06139	3/8 NC SERR FLANGE NUT
				26	1	320-3-1194	KEY, 1/4 X 2	59	19	900-06143	1/2 NC SERR FLANGE NUT
				27	1	320-3-1215	SPROCKET, 6045 AUGER	60	1	900-06498	5/16NC HEX TOPLOCK NUT
				28	2	320-3-1264	DECAL, CAUTION	61	4	900-06588	1/2 Std NC Nylock Nut
				29	1	320-3-1265	DECAL, ROTATING DRIVELINE	62	1	900-11009	1/4" LOCK WASHER
				30	2	320-3-1266	DECAL, KEEP SHIELDS	63	1	900-11011	3/8 LOCKWASHER
				31	2	320-3-1268	DECAL, DANGER STAND CLEAR	64	8	900-11013	1/2" SPLIT LOCK WASHER
				32	2	320-3-1269	DECAL, BLACKMAX	65	9	900-11031	1/4 FLATWASHER
				33	1	320-3-1270	DECAL, WARNING	66	1	900-11033	3/8 USS FLATWASHER
				34	1	320-3-1271	DECAL, SERIAL #	67	4	900-11034	7/16 USS FLAT WASHER
				35	1	320-3-1272	DECAL, 600	68	12	900-11035	1/2" USS FLATWASHER
				36	1	320-3-1277	SPROCKET, 5012 1"BORE	69	2	900-16015	5/16NCX3/4 SQ HD SET SCREW
				37	1	320-3-1287	SPRKT, 5018, 1-1/4B, 1/4KW	70	1	900-16329	SET SCREW, 1/4NCX3/8
				38	2	320-3-1290	GASKET, SPOUT-CHAIN GUARD	71	2	900-25005	R HITCH PIN #9
				39	1	320-3-1314	ARM, DEFLECTOR ADJUSTMENT	72	3	900-25012	7/16 x 1 3/4 Lynch Pin
				40	12	320-3-1445	BUSHING, SPACER	73	2	900-29174	1/4 X 1 ROLL PIN
				41	1	320-3-1608	SHIELD, DRIVE SHAFT	74	1	901-01005	1-1/4" 4 BOLT FLANGE BRG
				42	2	320-3-1862	IDLER SPROCKET, 5013 1/2" B	75	2	901-01006	1-1/2 4 BOLT FLANGE BRG
								76	1	903-03134	CHAIN 60-1X92
								77	1	903-03136	CHAIN, 50-1X86P+CONN LINK
								78	1	903-15616	GEAR BOX, R500
								79	1	905-15024	1/4-28 UNF ST Zerk



600

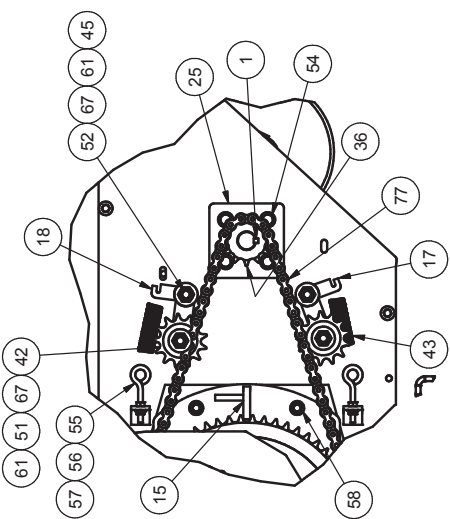
TITLE MODEL600 SNOWBLOWER	
DWG NO. 320-0-0600	DRAWN BY RS
DATE: 2/2/2005	SHEET 1 OF 2
REV A	SIZE B

PART Desc: All Dimensions are in inches and the tolerance applied is as follows unless otherwise noted. X.X = +/- .000 X.XX = +/- .030 X.XXX = +/- .010 Angles = +/- 1°	REVISION HISTORY DESCRIPTION REMOVED 320-2-1037,-1040,-1041,-1064,-1147,-3-1126,-1286,900-01755,-11073,-11183, ADDED A 320-2-1263,-1264,-1265,-1269,-3-1127,-1151,-1862,-1863,-1868,-1870,6905346,900-01227,-01233,-04550, -06001,-11034,905-15024
DATE 8/11/2011	APPROVED RS

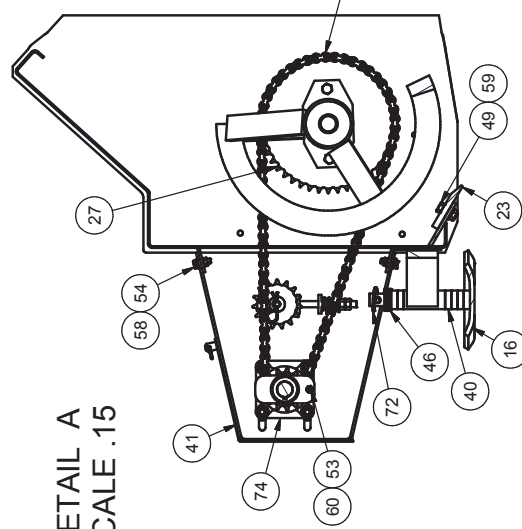
PART Desc: All Dimensions are in inches and the tolerance applied is as follows unless otherwise noted. X.X = +/- .000 X.XX = +/- .030 X.XXX = +/- .010 Angles = +/- 1°	REVISION HISTORY DESCRIPTION REMOVED 320-2-1037,-1040,-1041,-1064,-1147,-3-1126,-1286,900-01755,-11073,-11183, ADDED A 320-2-1263,-1264,-1265,-1269,-3-1127,-1151,-1862,-1863,-1868,-1870,6905346,900-01227,-01233,-04550, -06001,-11034,905-15024
DATE 8/11/2011	APPROVED RS

320-0-0600

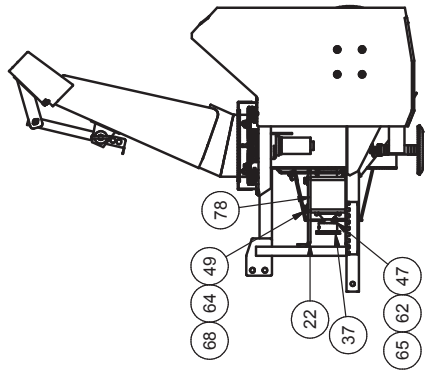
1 2 3 4



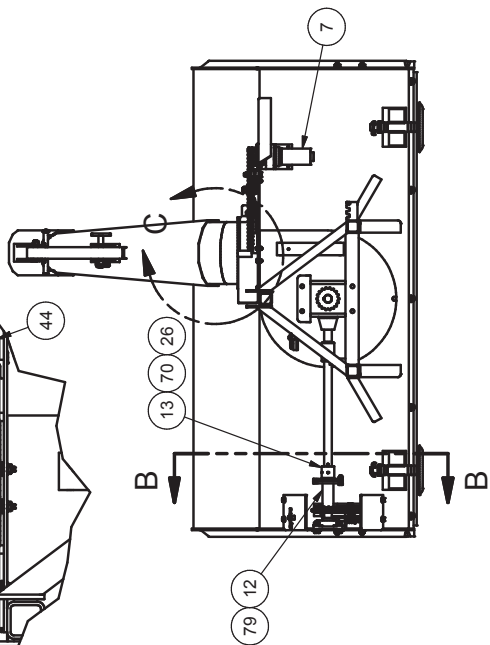
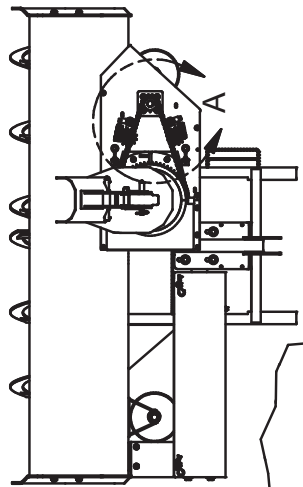
DETAIL A  
SCALE .15



# 600



DETAIL C  
SCALE .15

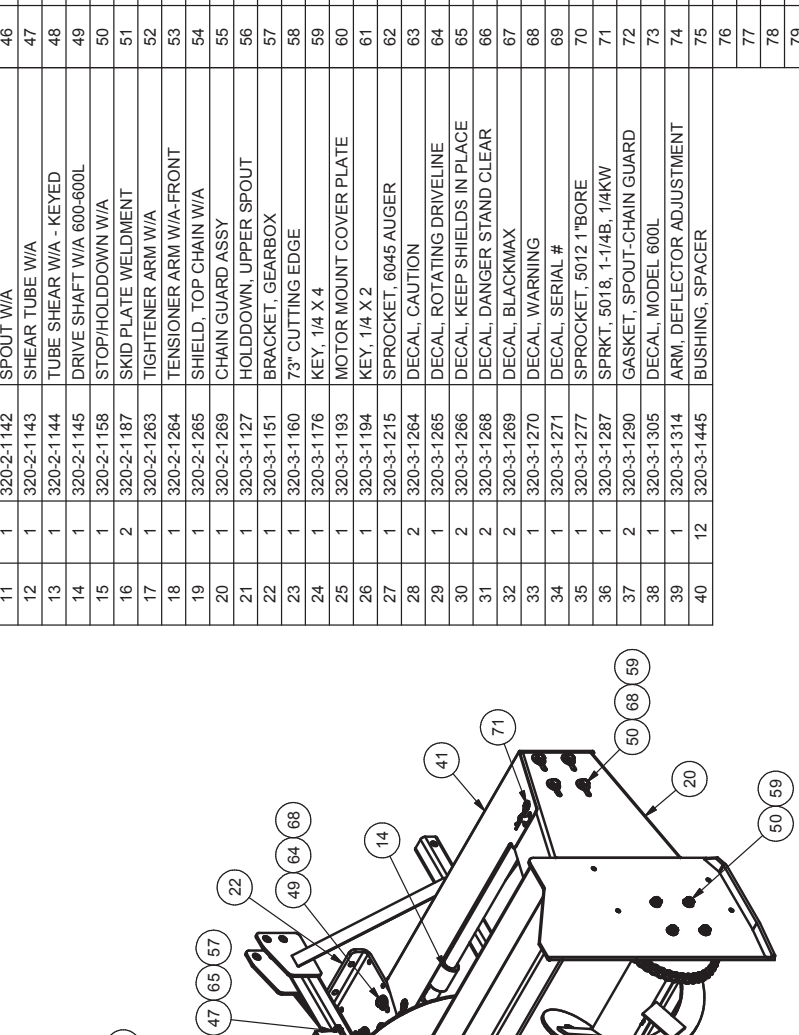


<b>SECTION D</b> All dimensions are in inches unless otherwise noted. The tolerance for all dimensions is $\pm .000$ unless otherwise noted.	
<b>SECTION A</b> All dimensions are in inches unless otherwise noted. The tolerance for all dimensions is $\pm .000$ unless otherwise noted.	
TITLE: MODEL 600 SNOWBLOWER DWG NO.: 320-0-0600 DATE: 2/2/2005	
DRAWN BY: RS	REV: A
SHEET 2 OF 2	

1 2 3 4

D C B A

ITEM	QTY	PART #	DESCRIPTION
1	1	100-3-2545	KEY, 1/4 SQ X 1
2	1	320-2-1036	PIN W/A, HYD. CYLINDER
3	1	320-2-1042	SPOUT CHAIN GUARD W/A - LH
4	1	320-2-1052	FRAME W/A, 600L MAIN
5	1	320-2-1054	AUGER W/A, 600L



Parts List				Parts List				Parts List			
ITEM	QTY	PART #	DESCRIPTION	ITEM	QTY	PART #	DESCRIPTION	ITEM	QTY	PART #	DESCRIPTION
6	1	320-2-1055	FAN, 19" BLOWER FAN	41	1	320-3-1563	SHIELD, DRIVE SHAFT 600L	45	2	320-3-1870	BUSHING
7	1	320-2-1065	ELEC. MOTOR ASSEMBLY	42	2	320-3-1862	IDLER SPROCKET, 50/13 1/2" B	46	12	6905346	WASHER
8	1	320-2-1091	PIN W/A, LWR SPOUT ADJUST.	43	2	320-3-1863	CS #76 .81 OD X 4 EXT SPRING	47	9	900-01005	1/4-20 X 3/4 GR 5 HHCS
9	1	320-2-1126	DEFLECTOR W/A, FORMED	44	2	320-3-1868	HOLDOWN, SPACER	48	1	900-01111	3/8-16 X 1-1/4 GR 5 HHCS
10	1	320-2-1129	PIN W/A, DEFL. HINGE	45	2	320-3-1870	BUSHING	49	13	900-01223	1/2-13 X 1-1/4 GR 5 HHCS
11	1	320-2-1142	SPOUT W/A	46	12	6905346	WASHER	50	14	900-01225	1/2NC X 1-1/2 HEX BOLT G5
12	1	320-2-1143	SHEAR TUBE W/A	47	9	900-01005	1/4-20 X 3/4 GR 5 HHCS	51	2	900-01227	1/2 X 1-3/4 GR 5 HHCS
13	1	320-2-1144	TUBE SHEAR W/A - KEYED	48	1	900-01111	3/8-16 X 1-1/4 GR 5 HHCS	52	2	900-01233	1/2-13 X 2-1/2 GR 5 HHCS ZP
14	1	320-2-1145	DRIVE SHAFT W/A 600-600L	49	13	900-01223	1/2-13 X 1-1/4 GR 5 HHCS	53	1	900-02054	5/16NC X 1-1/4 HHCS GR 2
15	1	320-2-1158	STOP/HOLDOWN W/A	50	14	900-01225	1/2NC X 1-1/2 HEX BOLT G5	54	8	900-03438	3/8-16 X 1 SERR FLG BOLT
16	2	320-2-1187	SKID PLATE WELDMENT	51	2	900-01227	1/2 X 1-3/4 GR 5 HHCS	55	2	900-04550	1/4 X 3 Eyebolt
17	1	320-2-1263	TIGHTENER ARM W/A	52	2	900-01233	1/2-13 X 2-1/2 GR 5 HHCS ZP	56	2	900-06001	1/4" HEX NUT
18	1	320-2-1264	TENSIONER ARM W/A-FRONT	53	1	900-02054	5/16NC X 1-1/4 HHCS GR 2	57	10	900-06135	1/4" SERR. FLANGE NUT
19	1	320-2-1265	SHIELD, TOP CHAIN W/A	54	8	900-03438	3/8-16 X 1 SERR FLG BOLT	58	10	900-06139	3/8 NC SERR FLANGE NUT
20	1	320-2-1269	CHAIN GUARD ASSY	55	2	900-04550	1/4 X 3 Eyebolt	59	19	900-06143	1/2 NC SERR FLANGE NUT
21	1	320-3-1127	HOLDOWN, UPPER SPOUT	56	2	900-06001	1/4" HEX NUT	60	1	900-06498	5/16NC HEX TOPLOCK NUT
22	1	320-3-1151	BRACKET, GEARBOX	57	10	900-06135	1/4" SERR. FLANGE NUT	61	4	900-06588	1/2 Std NC Nylock Nut
23	1	320-3-1160	73" CUTTING EDGE	58	10	900-06139	3/8 NC SERR FLANGE NUT	62	1	900-11009	1/4" LOCK WASHER
24	1	320-3-1176	KEY, 1/4 X 4	59	19	900-06143	1/2 NC SERR FLANGE NUT	63	1	900-11011	3/8 LOCKWASHER
25	1	320-3-1193	MOTOR MOUNT COVER PLATE	60	1	900-06498	5/16NC HEX TOPLOCK NUT	64	8	900-11013	1/2" SPLIT LOCK WASHER
26	1	320-3-1194	KEY, 1/4 X 2	61	4	900-06588	1/2 Std NC Nylock Nut	65	9	900-11031	1/4 FLATWASHER
27	1	320-3-1215	SPROCKET, 60/45 AUGER	62	1	900-11009	1/4" LOCK WASHER	66	1	900-11033	3/8 USS FLATWASHER
28	2	320-3-1264	DECAL, CAUTION	63	1	900-11011	3/8 LOCKWASHER	67	4	900-11034	7/16 USS FLAT WASHER
29	1	320-3-1265	DECAL, ROTATING DRIVE LINE	64	8	900-11013	1/2" SPLIT LOCK WASHER	68	12	900-11035	1/2" USS FLATWASHER
30	2	320-3-1266	DECAL, KEEP SHIELDS IN PLACE	65	9	900-11031	1/4 FLATWASHER	69	2	900-16015	SET SCREW, 1/4NCX3/8
31	2	320-3-1268	DECAL, DANGER STAND CLEAR	66	1	900-11033	3/8 USS FLATWASHER	70	2	900-16329	R HITCH PIN #9
32	2	320-3-1269	DECAL, BLACKMAX	67	4	900-11034	7/16 USS FLAT WASHER	71	2	900-25005	7/16 x 1 3/4 Lynch Pin
33	1	320-3-1270	DECAL, WARNING	68	12	900-11035	1/2" USS FLATWASHER	72	3	900-25012	1/4 X 1 ROLL PIN
34	1	320-3-1271	DECAL, SERIAL #	69	2	900-16015	SET SCREW, 1/4NCX3/8	73	2	900-29174	1-1/4" 4 BOLT FLANGE BRG
35	1	320-3-1272	SPROCKET, 50/12 1"BORE	70	2	900-16329	SET SCREW, 1/4NCX3/8	74	2	901-01005	1-1/2 4 BOLT FLANGE BRG
36	1	320-3-1287	SPRKT, 50/18, 1-1/4B, 1/4KW	71	2	900-25005	R HITCH PIN #9	75	2	901-01006	CHAIN 60-1X92
37	2	320-3-1290	GASKET, SPOUT-CHAIN GUARD	72	3	900-25012	7/16 x 1 3/4 Lynch Pin	76	1	903-03134	CHAIN, 50-1X86P+CONN LINK
38	1	320-3-1305	DECAL, MODEL 600L	73	2	900-29174	1/4 X 1 ROLL PIN	77	1	903-03136	GEAR BOX, R500
39	1	320-3-1314	ARM, DEFLECTOR ADJUSTMENT	74	1	901-01005	1-1/4" 4 BOLT FLANGE BRG	78	1	903-15616	1/4-28 UNF ST Zerkl
40	12	320-3-1445	BUSHING, SPACER	75	2	901-01006	1-1/2 4 BOLT FLANGE BRG	79	1	905-15024	

**600L**  
Low Profile

REV	DESCRIPTION	DATE	APPR
A	REMOVED 320-2-1037, -1040, -1041, 1064, 320-3-1126, -1196, -1286, 900-0755, 900-1183, ADDED 320-2-1263, -1264, -1265, -1268, 320-3-1127, -1862, -1863, -1868, -1870, 900-01227, 900-01233, 900-06001, 900-06135, 900-06588, 900-04550	7/8/2011	RS

TITLE	DRAWN BY	REV
600L SNOWBLOWER	RS	A
DWG NO. 320-0-0610		
DATE: 7/19/2007		B
SHEET 1 OF 2		

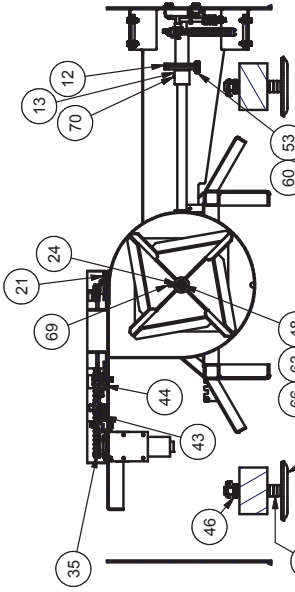
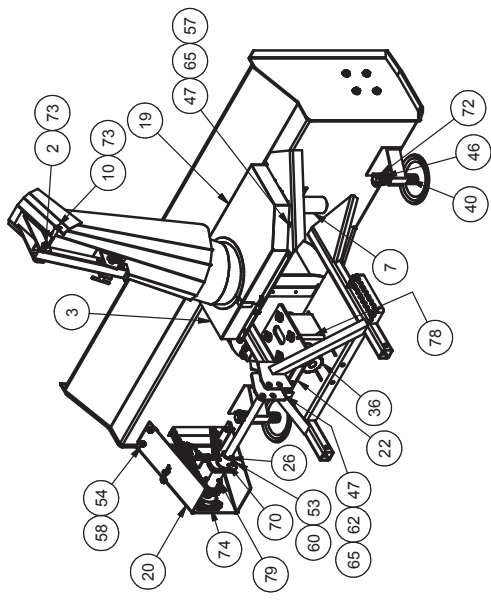
7th St. Lehigh Ave.  
Coudersport, PA 15565  
Phone: 814-327-2500  
Fax: 814-327-2504

**Snowex Tooling & Mfg.**

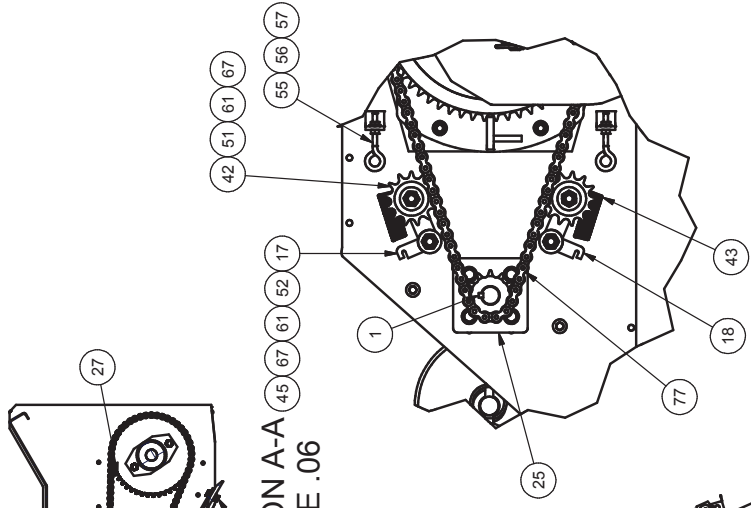
All Dimensions are in inches and the tolerance applied is as follows unless otherwise noted.  
X.X = +/- .001  
X.XX = +/- .030  
X.XXX = +/- .010  
Angles = +/- 1'

320-0-0610

1 2 3 4

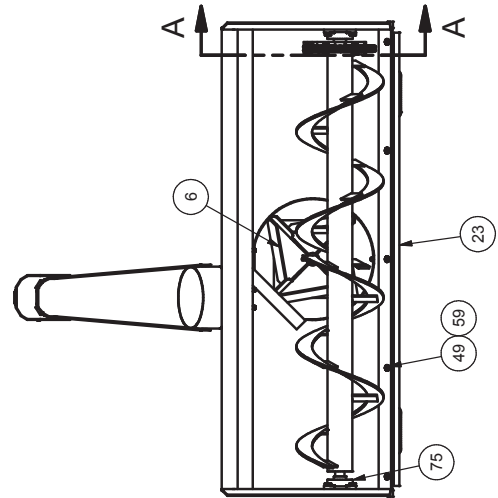
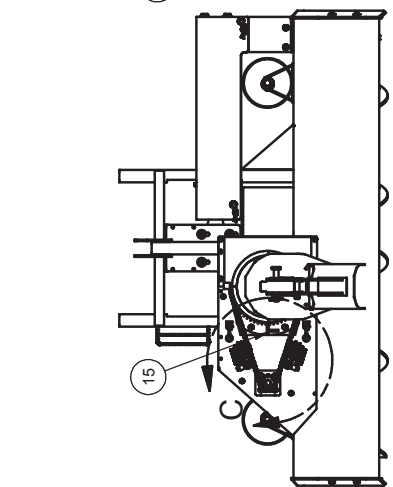
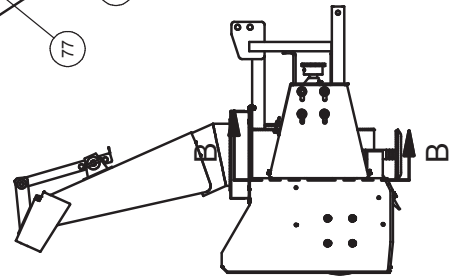


SECTION B-B  
SCALE .06



SECTION A-A  
SCALE .06

DETAIL C  
SCALE .15



# 600L

Low Profile

NBT Desc: All Dimensions are in inches and the tolerance applied is as follows unless otherwise noted.  
 X.X = +/- .100  
 X.XX = +/- .030  
 X.XXX = +/- .010  
 Angles = +/- 1°

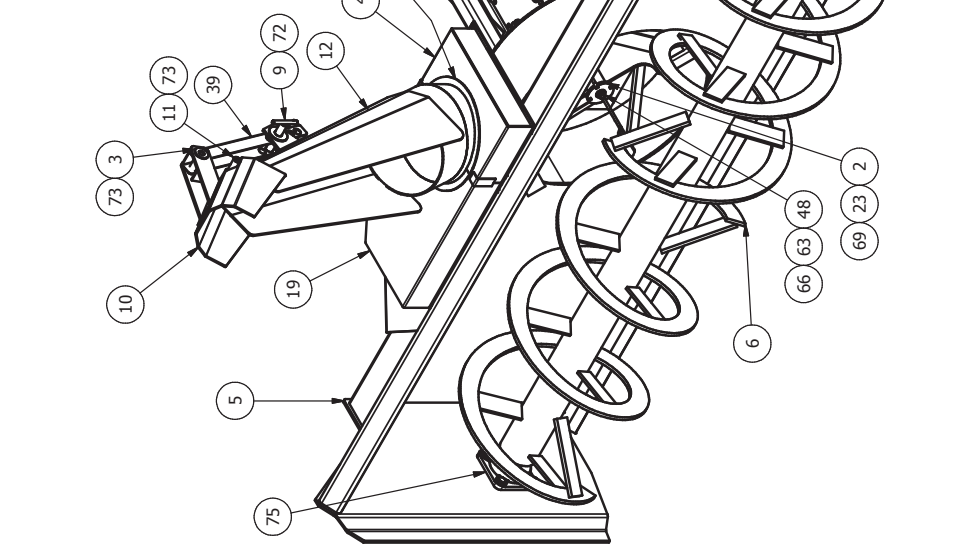
Shawanna Tooling & Mfg.  
 711 S. Lehigh Ave.  
 Conowingo, MD 21042  
 P.O. Box 2277  
 P.A.N. 703.797.2504

TITLE	600L SNOWBLOWER	DRAWN BY	RS	REV	A
DWG NO.	320-0-0610	CHECKED BY		DATE	7/19/2007
SHEET2 OF			2		

D C B A



PARTS LIST			PARTS LIST			PARTS LIST					
ITEM	QTY	PART NUMBER	DESCRIPTION	ITEM	QTY	PART NUMBER	DESCRIPTION	ITEM	QTY	PART NUMBER	DESCRIPTION
1	1	100-3-2545	KEY, 1/4 SQ. X 1	11	1	320-2-1129	PIN W/A, DEFL. HINGE	43	2	320-3-1863	CS #76 .81 OD X 4 EXT SPRING
2	1	320-2-1031	FAN W/A, 21" 600,700	12	1	320-2-1142	SPOUT W/A	44	2	320-3-1868	HOLDDOWN, SPACER
3	1	320-2-1036	PIN W/A, HYD. CYLINDER	13	1	320-2-1143	SHEAR TUBE W/A	45	2	320-3-1870	BUSHING
4	1	320-2-1042	SPOUT CHAIN GUARD W/A - LH	14	1	320-2-1144	TUBE SHEAR W/A - KEYED	46	12	6905346	WASHER
5	1	320-2-1061	FRAME W/A, 700	15	1	320-2-1158	STOP/HOLDDOWN W/A	47	9	900-01005	1/4-20 x 3/4 GR 5 HHCS
6	1	320-2-1062	AUGER, 700	16	2	320-2-1187	SKID PLATE WELDMENT	48	1	900-01111	3/8-16 X 1-1/4 GR 5 HHCS
7	1	320-2-1063	DRIVE SHAFT W/A -700	17	1	320-2-1263	TIGHTENER ARM W/A	49	13	900-01223	1/2-13 X 1-1/4 GR 5 HHCS
8	1	320-2-1065	ELEC. MOTOR ASSEMBLY	18	1	320-2-1264	TENSIONER ARM W/A-FRONT	50	14	900-01225	1/2NC X 1-1/2 HEX BOLT G5
9	1	320-2-1091	PIN W/A, LWR SPOUT ADJUST.	19	1	320-2-1265	SHIELD, TOP CHAIN W/A	51	2	900-01227	1/2 X 1-3/4 GR 5 HHCS
10	1	320-2-1126	DEFLECTOR W/A, FORMED	20	1	320-2-1269	CHAIN GUARD ASSY	52	2	900-01233	1/2-13 X 2-1/2 GR 5 HHCS ZP
				21	1	320-3-1127	HOLDDOWN, UPPER SPOUT	53	1	900-02054	5/16NC X 1-1/4 HHCS GR 2
				22	1	320-3-1151	BRACKET, GEARBOX	54	8	900-03438	3/8-16 x 1 SERR FLG BOLT
				23	1	320-3-1176	KEY, 1/4 X 4	55	2	900-04550	1/4 X 3 Eyebolt
				24	1	320-3-1193	MOTOR MOUNT COVER PLATE	56	2	900-06001	1/4" HEX NUT
				25	1	320-3-1194	KEY, 1/4 X 2	57	11	900-06135	1/4" SERR. FLANGE NUT
				26	1	320-3-1215	SPROCKET, 6045 AUGER	58	10	900-06139	3/8 NC SERR FLANGE NUT
				27	1	320-3-1262	83" CUTTING EDGE	59	19	900-06143	1/2 NC SERR FLANGE NUT
				28	2	320-3-1264	DECAL, CAUTION	60	1	900-06498	5/16NC HEX TOPLOCK NUT
				29	1	320-3-1265	DECAL, ROTATING DRIVELINE	61	4	900-06588	1/2 Std NC Nylock Nut
				30	2	320-3-1266	DECAL, KEEP SHIELDS IN PLACE	62	1	900-11009	1/4" LOCK WASHER
				31	2	320-3-1268	DECAL, DANGER STAND CLEAR	63	1	900-11011	3/8 LOCKWASHER
				32	2	320-3-1269	DECAL, BLACKMAX	64	8	900-11013	1/2" SPLIT LOCK WASHER
				33	1	320-3-1270	DECAL, WARNING	65	9	900-11031	1/4 FLATWASHER
				34	1	320-3-1271	DECAL, SERIAL #	66	1	900-11033	3/8 USS FLATWASHER
				35	1	320-3-1273	DECAL, 700	67	4	900-11034	7/16 USS FLAT WASHER
				36	1	320-3-1277	SPROCKET, 5012 1"BORE	68	12	900-11035	1/2" USS FLATWASHER
				37	1	320-3-1287	SPRKT, 5018, 1-1/4B, 1/4KW	69	2	900-16015	5/16NCX3/4 SQ HD SET SCREW
				38	2	320-3-1290	GASKET, SPOUT-CHAIN GUARD	70	1	900-16329	SET SCREW, 1/4NCX3/8
				39	1	320-3-1314	ARM, DEFLECTOR ADJUSTMENT	71	2	900-25005	R HITCH PIN #9
				40	12	320-3-1445	BUSHING, SPACER	72	3	900-25012	7/16 x 1.3/4 Lynch Pin
				41	1	320-3-1562	SHIELD, DRIVE SHAFT	73	2	900-29174	1/4 X 1 ROLL PIN
				42	2	320-3-1862	IDLER SPROCKET, 5013 1/2" B	74	1	901-01005	1-1/4" 4 BOLT FLANGE BRG
								75	2	901-01006	1-1/2 4 BOLT FLANGE BRG
								76	1	903-03134	CHAIN 60-1X92
								77	1	903-03136	CHAIN, 50-1X86P+CONN LINK
								78	1	903-15616	GEAR BOX, R500
								79	1	905-15024	1/4-28 UNF ST Zerk



# 700

718 St. Lehigh Ave.  
 Bethlehem, PA 18020  
 Phone: 610-797-2500  
 Fax: 610-797-2504

MODEL 700 SNOWBLOWER  
 QWS NO. 320-0-0700  
 DRAWN BY: Brent  
 DATE: 7/17/2007  
 SHEET 1 OF 2

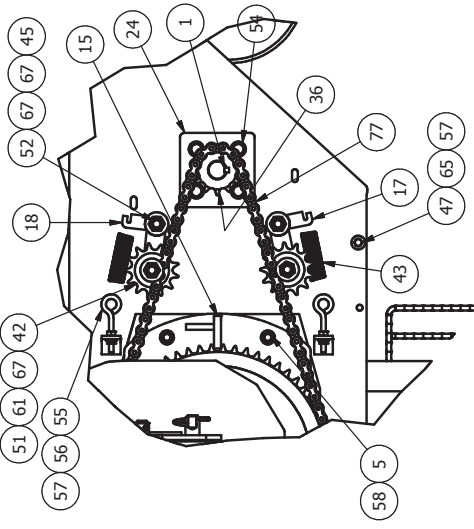
REVISION HISTORY

REV	DESCRIPTION	DATE	APPROVED
A	REMOVED 320-2-1037,-1040,-1041,-1064,-1147,-3-1126,-1196,-1286,900-01755,-11073,-11183, ADDED 320-2-1263,-1264,-1265,-1269,-3-1127,-1151,-1862,-1863,-1868,-1870,6905346,900-01227,-01233,-04550,-06001,-11034,905-15024	8/10/2011	RS

Part Desc: All Dimensions are in inches and the tolerance applied is as follows unless otherwise noted.  
 X.X = +/- .100  
 X.XX = +/- .030  
 X.XXX = +/- .010  
 Angles = +/- .1

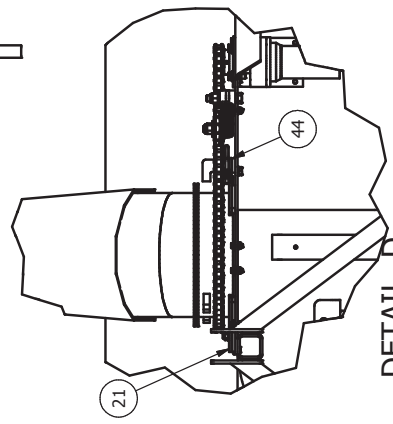
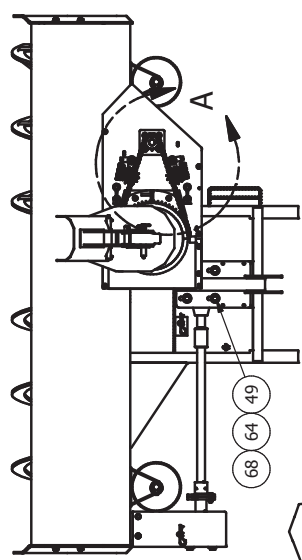
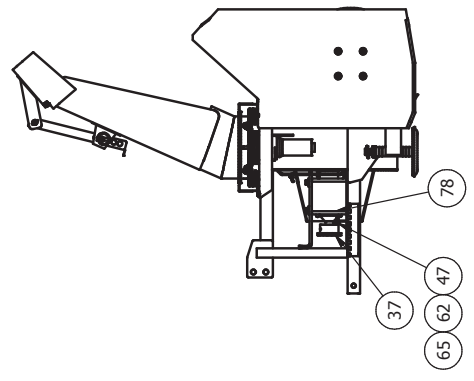
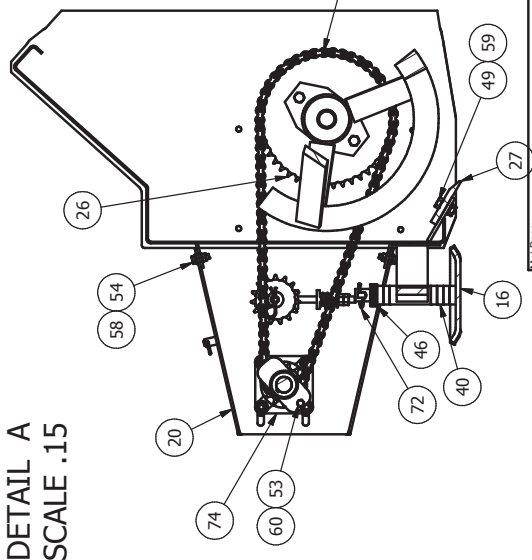
320-0-0700

1 2 3 4

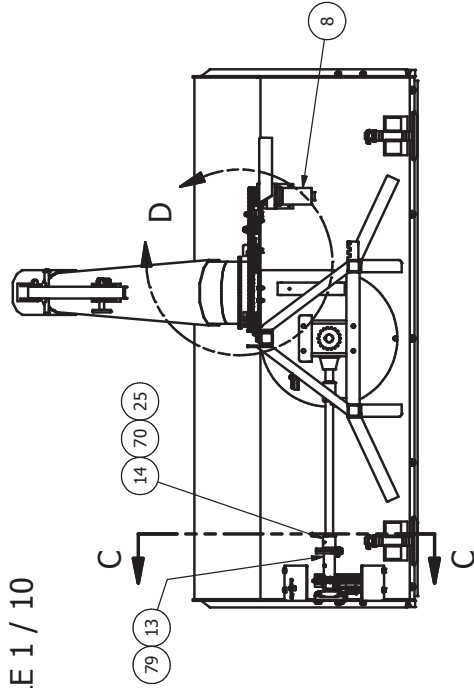


SECTION C-C  
SCALE .1

DETAIL A  
SCALE .15



DETAIL D  
SCALE 1 / 10



# 700

MKT Desc:

All Dimensions are in inches and the tolerance applied is as follows unless otherwise noted.  
X.X = +/- .100  
X.XX = +/- .030  
X.XXX = +/- .010  
Angles = +/- .1°

711 S. Lichten Ave.  
Crownsville, MD 21032  
Shrewsbury Tooling & Mfg.  
P.O. Box 2297  
P.A.N. 701.297.2504

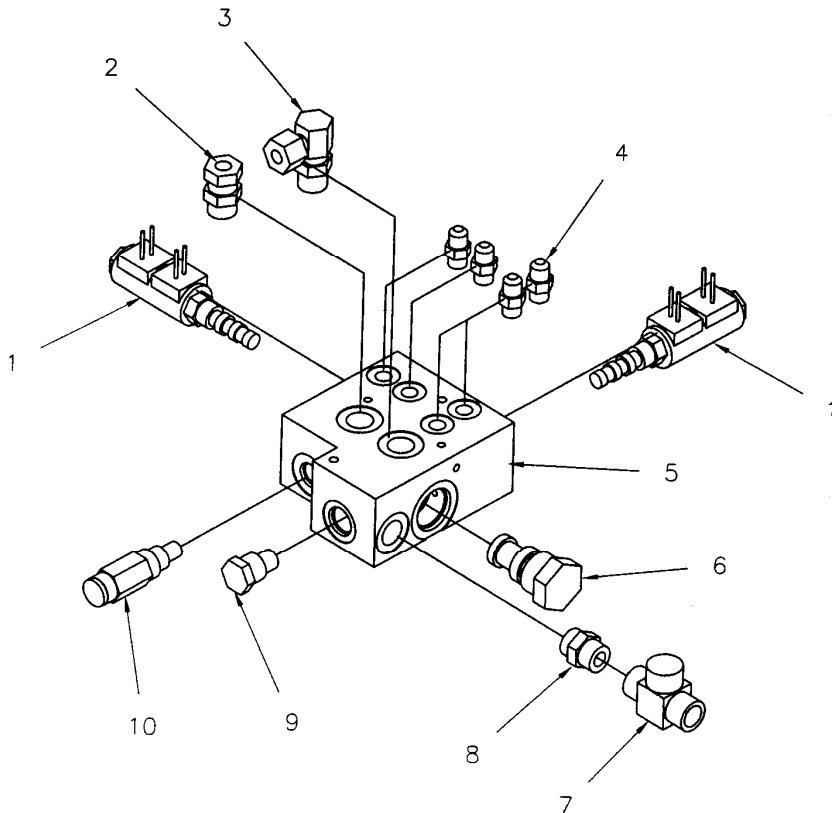
TITLE  
MODEL 700 SNOWBLOWER

DWG NO.	320-0-0700	DRAWN BY	Brent	REV	A
DATE:	7/17/2007	SIZE	H		
					SHEET 2 OF 2





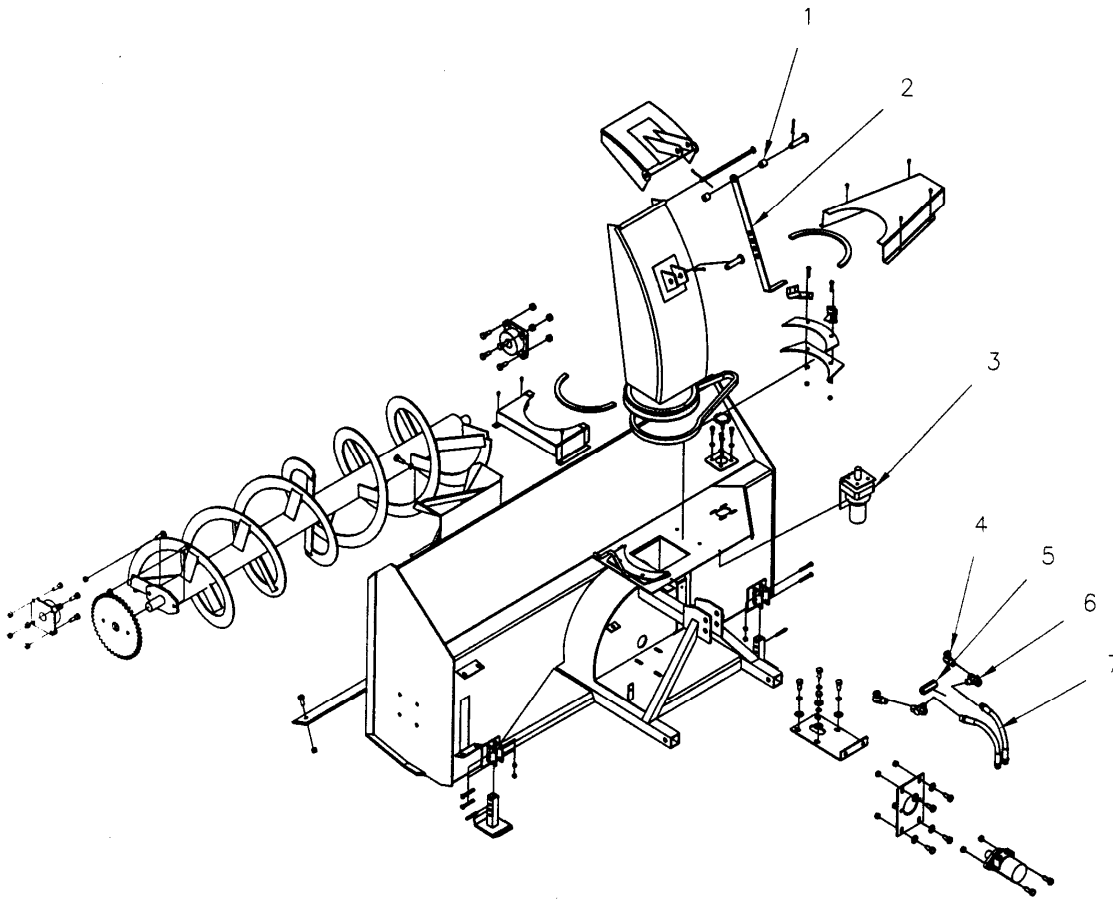
## HYDRAULIC DIVERTOR BLOCK ASSEMBLY



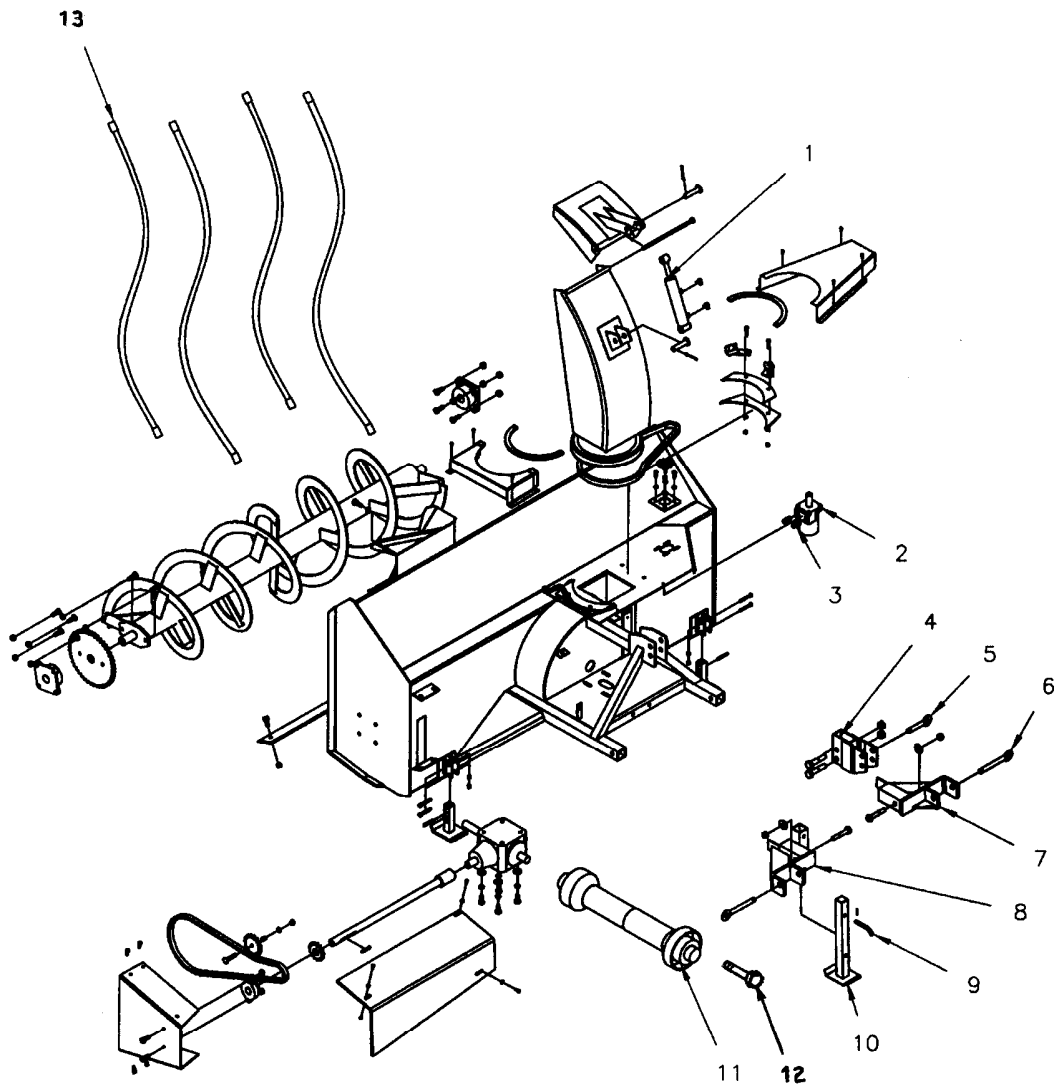
ITEM NO.	PART NO.	DESCRIPTION	QTY.
(FOR ASSEMBLY NO. SEE ITEM 38 ON PAGES 11 & 12)			
1	904-05502	DIRECTIONAL CONTROL VALVE	2
2	904-05512	7/8 MALE O-RING- 1/2 FML SWIVEL	1
3	904-05511	REDUCING 90 DEGREE ELBOW	1
4	904-05513	9/16-18 MALE STRGHT ADAPTER	4
5	320-3-1292	HYDRAULIC DIVERTOR BLOCK	1
6	904-05523	LOGIC CARTRIDGE	1
7	905-01358	1/2 FEMALE TEE	1
8	904-08011	7/8 MALE TO 1/2 MALE NIPPLE	1
9	904-05522	RELIEF VALVE	1
10	904-05506	HYD MOTOR CHECK VALVE	1



## ELECTRIC CHUTE ROTATOR & MANUALLY ADJUSTED DEFLECTOR



ITEM NO.	PART NO.	DESCRIPTION	QTY.
1	320-3-1297	HANDLE BUSHING	2
2	320-3-1150	DEFLECTOR ADJUSTMENT ARM	1
	320-3-1314	DEFLECTOR ADJUSTMENT ARM (NEW DESIGN PART, AFTER 1/1/02)	1
3	320-2-1065	ELECTRIC CHUTE MOTOR	1
4	905-01329	1/2 MP X 1/2 FPX ELBOW	2
5	905-03108	COAST VALVE	1
6	904-08009	TEE FITTING	2
7	904-06015	HYDRAULIC HOSE	2
-	320-2-1069	POWER SUPPLY WIRING HARNESS	1
-	320-2-1070	BLOWER HALF WIRING HARNESS	1



## 540 PTO TRACTOR MODELS

ITEM NO.	PART NO.	DESCRIPTION	QTY.
1	905-21206	DEFLECTOR HYD CYLINDER	1
	905-01328	3/8 ELBOW, MALE TO FEMALE	2
2	904-05528	CHUTE ROTAT. MOTOR (PRIOR 12/01)	1
	904-05529	CHUTE ROTAT. MOTOR (AFTER 12/01)	1
	900-01109	3/8NC X 1" G5 HEX BOLT	4
	900-11011	3/8 LOCK WASHER	4
3	904-08013	ADAPTER, 7/8MORB X 3/8 FPT	2
4	320-2-1047	UPPER 3 PT MOUNT	1
	900-01759	5/8NC C 3-1/2 G5 HEX BOLT	2
	900-11037	5/8" FLAT WASHER	2
	900-11015	5/8" LOCK WASHER	2
	900-06013	5/8NC HEX NUT	2
5	320-2-1048	UPPER 3 PT PIN	1
6	320-2-1049	LOWER 3 PT PIN	2
7	320-2-1045	LH LOWER 3 PT MOUNT	1
	900-01808	3/4NC X 3-1/2 G5 HEX BOLT	1
	900-06592	3/4NC NYLON LOCK NUT	1
8	320-2-1046	RH LOWER 3 PT MOUNT	1
	900-01808	3/4NC X 3-1/2 G5 HEX BOLT	1
	900-06592	3/4NC NYLON LOCK NUT	1
9	320-3-1075	JACK STAND PIN	1
	900-25005	5/32" HAIRPIN	1
10	320-2-1050	JACK STAND	1
11	903-18053	PTO ASSEMBLY WITH SHEAR BOLT	1
	900-29209	5/16 X 2-1/2 ROLL PIN	1
	106-3-0529	1/4 X 1-1/2 SQUARE KEY	1
	900-16391	3/8UNC X 1/2 SKT HD SET SCREW	1
12	900-01105	3/8 X 3/4 GRADE 5 SHEAR BOLT	1
13	904-06026	HYD. HOSE, 3/8", 1/2MP X 3/8MP	4

# ELECTRIC ROTATING CHUTE

## WIRING HARNESS "E" AND ROCKER SWITCH INSTALLATION

PART NUMBER 320-1-0111

APPLICATIONS:  
T/ATV Series

**CAUTION** When attaching wires to the motor or solenoid terminals, hold the inner nut with a wrench while tightening the outer nut with a second wrench. Do not allow the terminals to rotate in their housings. Rotation may cause internal wire breakage or part misalignment (Figure 4).

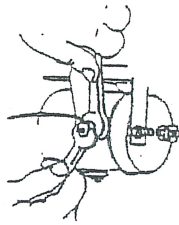


Figure 4 - Proper Terminal Tightening

**Step (1)**

Check to ensure that the vehicle ground and positive leads from the battery are disconnected before performing any electrical work.

**DANGER** DO NOT ATTEMPT TO INSTALL WIRING WHEN THE BATTERY IS CONNECTED. Automotive batteries contain flammable and explosive gases. Wear eye protection during installation and remove all metal jewelry. Do not lean over battery while making connections.

**Step (2)**

Route the wiring harness, attaching the harness to hard points on the vehicle with cable ties.

**Note:** When routing the wires, the appropriate terminals should be located near the battery, switch mounting point, and winch. Your installation requirements will vary depending upon your vehicle and winch. Make sure wires are long enough to reach the battery, switch mounting point and winch.

**WARNING** Ensure that the wiring harness does not interfere or come in contact with any hot or moving engine, suspension, steering, braking or exhaust parts.

**Step (3)**

Using the supplied clamps, bracket and hardware mount switch box in a convenient location. See Figure 5a or 5b.

**Note:** Hole pattern in switch box mounting bracket allows switch box mounting in any one of several positions and orientations. Always use both box combination head screws provided. Punch out the appropriate two mounting holes in the switch box. Short and long extension links are provided to elevate the switch as needed. Do not use more than one link to mount the switch box mounting bracket to the round tube clamps.

**CAUTION**

ALWAYS USE THE BOX MOUNTING BRACKET, TWO SCREWS AND LOCK NUTS PROVIDED. Screw lengths are sized for correct penetration into the switch box. Excess penetration may result in short circuits that could lead to wire over heating.

**WARNING**

Wire terminals must be properly installed on the switch. Improper installation will result in high resistance connections that could lead to excessive heat.

**Step (4)**

Match wire terminals to the appropriate spade terminals on the back of the rocker switch and make connections (Figure 5b for T1500/ATV2000, Figure 5c for ATV3000).

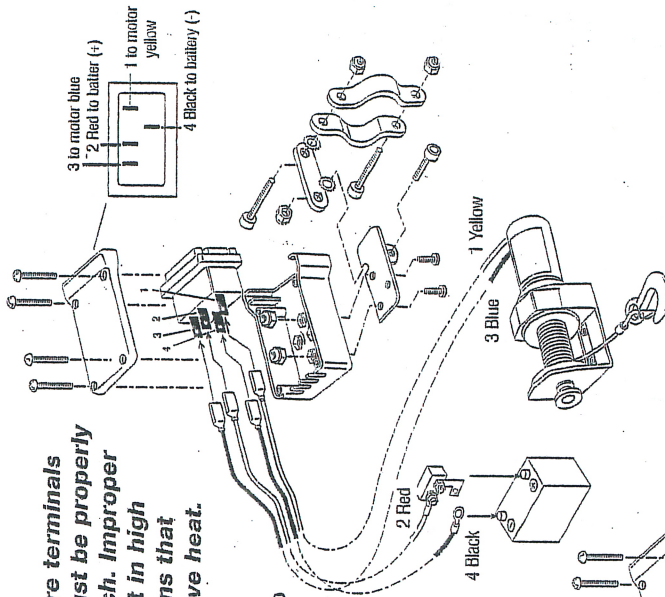
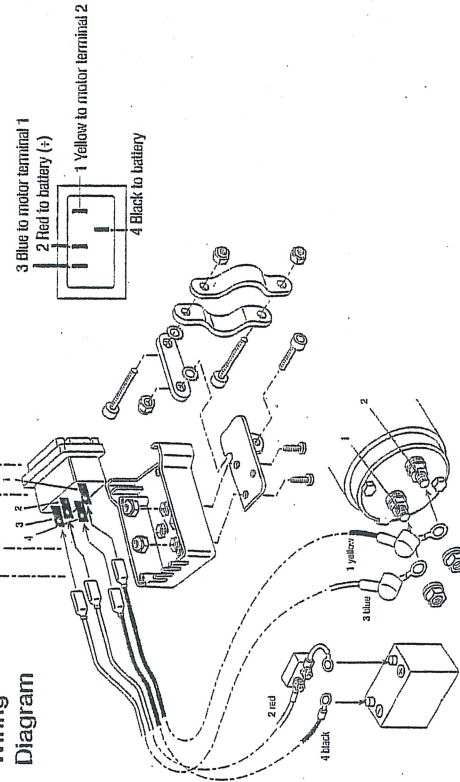
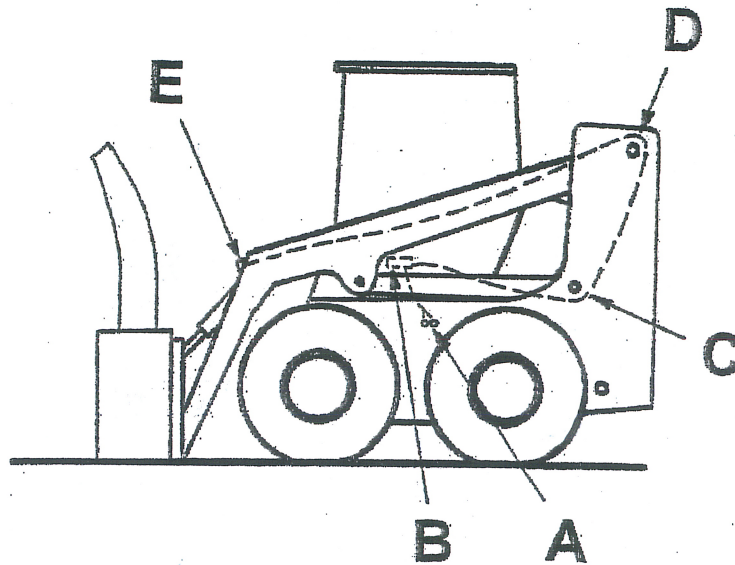


Figure 5b - T1500/ATV2000 Wiring Diagram

**Figure 5c -**

ATV3000 Wiring Diagram





## WIRING HARNESS ROUTING

A wiring harness is included with skidsteer snowblowers purchased with hydro chute and deflector controls. Routing this harness will vary among skidsteer makes and models. This instruction sheet is intended to be general in nature, specifics will be determined by the person installing the harness.

Point **A** is power supply. A red and a black wire break-out of the main harness. Connect these wires to positive and ground respectively. Point **B** is the hand set or control panel with mounting bracket. The wiring harness 9 socket connector plugs into the hand set. Route the harness around pivot points **C** and **D** with enough slack to prevent pulling when boom arms are raised. Too much slack may cause the harness to become pinched in pivot points. If your skidsteer has other electrical or hydraulic lines, you may follow those. Point **E** is the 9 pin all-weather plug-in. It too has a mounting bracket.









**701 Lenham Ave. - P.O. Box 647**

**Cooperstown, ND 58425**

**Office (701) 797-2700**

**Fax (701) 797-2584**

**Toll Free (800) 797-1883**

**[www.sheyennemfg.com](http://www.sheyennemfg.com)**