

SHEYENNE BLACK MAX

Snowblower



OWNER/OPERATOR INSTRUCTION/PARTS MANUAL

**3 – POINT / 1000 RPM
Tractor Models
800, 900 & 1000**

**Sheyenne Tooling & Mfg.
PO Box 647
701 Lenham Ave. SW
Cooperstown, ND 58425**

www.sheyennemfg.com

(701)797-2700

Fax (701)797-2584

(800)797-1883

Dear SHEYENNE BLACK MAX Owner/Operator,

Thank you for choosing SHEYENNE BLACK MAX! We believe your SHEYENNE BLACK MAX Snowblower is the best Snowblower made in America.

Please read and study this operator's manual completely. Regular preventative maintenance and proper operation are the two most important ways to avoid costly downtime and major repairs. Included are regular maintenance steps and the safest operating techniques.

Please follow all safety instructions in this manual and become familiar with all Danger and Caution decals on your SHEYENNE BLACK MAX Snowblower. They alert you to the possible risk of injury to you or damage to the Snowblower. Your SHEYENNE BLACK MAX Snowblower was designed with your safety in mind.

As manufacturer of the SHEYENNE BLACK MAX Snowblower, our most important goal is for every owner/operator to be 100% satisfied.

THANK YOU AGAIN FOR CHOOSING SHEYENNE BLACK MAX SNOWBLOWER!

FARM-COMMERCIAL-INDUSTRIAL



**This manual includes the following sizes, model numbers
and PTO options**

Size	8 Foot	9 Foot	10 Foot
Model	800	900	1000
PTO Options	1000 PTO 1-3/8 DIA 21 Spline	1000 PTO 1-3/8 DIA 21 Spline	1000 PTO 1-3/8 DIA 21 Spline
	1000 PTO 1-3/4 DIA 20 Spline	1000 PTO 1-3/4 DIA 20 Spline	1000 PTO 1-3/4 DIA 20 Spline

Features:

- ★ **Three point hitch mounting**
- ★ **CAT II & III**
- ★ **Precision gearbox drive**
- ★ **Two cross augers**
- ★ **#80 chain drive to augers**
- ★ **Four blade blower fan**
- ★ **Replaceable cutting edge**
- ★ **Replaceable skid shoes**
- ★ **Hydraulic controlled chute and deflector**
- ★ **Shear pin protected**
- ★ **Hoses and couplers included**

ATTENTION DEALER

Be sure the OWNERS MANUAL remains with the snowblower when sold. It contains important procedures for safe operation.

SERIAL NUMBER LOCATION

Always give your dealer the serial number of your Black Max snow blower when ordering parts, requesting service or for information.

The serial number plate is located where indicated below. Please mark this number and other information in the spaces provided. It will be useful for future reference.



Model Number _____

Serial Number _____

Production Year _____

Please enter information below and SAVE FOR FUTURE REFERENCE

SNOWBLOWER WARRANTY

SHEYENNE TOOLING & MANUFACTURING warrants each new product to be free from defects in material and workmanship. This warranty is applicable only for the normal service life expectancy of the machine or components, not to exceed twelve consecutive months from the date of delivery of the new SHEYENNE TOOLING & MANUFACTURING product to the original purchaser.

Genuine SHEYENNE TOOLING & MANUFACTURING replacement parts and components will be warranted for 90 days from date of purchase, or the remainder of the original equipment warranty period, whichever is longer.

Under no circumstances will it cover any merchandise or components thereof, which in the opinion of the company, has been subject to negligent handling, misuse, alteration, an accident, or if repairs have been made with parts other than those obtainable through SHEYENNE TOOLING & MANUFACTURING.

The company in no way warrants engines, batteries, tires or other trade accessories since these items are warranted separately by their respective manufacturers.

Our obligation under this warranty shall be limited to repairing or replacing, free of charge to the original purchaser, any part that in our judgment shall show evidence of such defect, provided further that such part shall be returned within thirty (30) days from date of failure to SHEYENNE TOOLING & MANUFACTURING.

This warranty shall not be interpreted to render us liable for injury or damages of any kind or nature to person or property.

Except as set forth above, **SHEYENNE TOOLING & MANUFACTURING shall have no obligation of liability of any kind on account of any of its equipment and shall not be liable for special or consequential damage. SHEYENNE TOOLING & MANUFACTURING makes no other warranty, express or implied, and, specifically, SHEYENNE TOOLING & MANUFACTURING disclaims any implied warranty of merchantability of fitness for a particular purpose. Some states or provinces do not permit limitations or exclusions of implied warranties of incidental or consequential damages, so the limitations or exclusions in this warranty may not apply.**

This warranty is subject to any existing conditions of supply, which may directly affect our ability to obtain materials or manufacture replacement parts.

SHEYENNE TOOLING & MANUFACTURING reserves the right to make improvements in design or changes in specifications at any time, without incurring any obligations to owners of units previously sold.

No one is authorized to alter, modify or enlarge neither this warranty nor the exclusions, limitations and reservations.

I have read and understand the above instructions and warranty. Please complete both copies. **Warranty is invalid until signed and dealer copy is returned to the dealer.**

Date Purchased _____

Dealership _____

Model Number _____

Serial Number _____

Customer Signature _____

Date _____

Dealer Signature _____

Date _____

Customer Copy
(Keep in this book)

Please enter information below and SAVE FOR FUTURE REFERENCE

SNOWBLOWER WARRANTY

SHEYENNE TOOLING & MANUFACTURING warrants each new product to be free from defects in material and workmanship. This warranty is applicable only for the normal service life expectancy of the machine or components, not to exceed twelve consecutive months from the date of delivery of the new SHEYENNE TOOLING & MANUFACTURING product to the original purchaser.

Genuine SHEYENNE TOOLING & MANUFACTURING replacement parts and components will be warranted for 90 days from date of purchase, or the remainder of the original equipment warranty period, whichever is longer.

Under no circumstances will it cover any merchandise or components thereof, which in the opinion of the company, has been subject to negligent handling, misuse, alteration, an accident, or if repairs have been made with parts other than those obtainable through SHEYENNE TOOLING & MANUFACTURING.

The company in no way warrants engines, batteries, tires or other trade accessories since these items are warranted separately by their respective manufacturers.

Our obligation under this warranty shall be limited to repairing or replacing, free of charge to the original purchaser, any part that in our judgment shall show evidence of such defect, provided further that such part shall be returned within thirty (30) days from date of failure to SHEYENNE TOOLING & MANUFACTURING.

This warranty shall not be interpreted to render us liable for injury or damages of any kind or nature to person or property.

Except as set forth above, **SHEYENNE TOOLING & MANUFACTURING shall have no obligation of liability of any kind on account of any of its equipment and shall not be liable for special or consequential damage. SHEYENNE TOOLING & MANUFACTURING makes no other warranty, express or implied, and, specifically, SHEYENNE TOOLING & MANUFACTURING disclaims any implied warranty of merchantability of fitness for a particular purpose. Some states or provinces do not permit limitations or exclusions of implied warranties of incidental or consequential damages, so the limitations or exclusions in this warranty may not apply.**

This warranty is subject to any existing conditions of supply, which may directly affect our ability to obtain materials or manufacture replacement parts.

SHEYENNE TOOLING & MANUFACTURING reserves the right to make improvements in design or changes in specifications at any time, without incurring any obligations to owners of units previously sold.

No one is authorized to alter, modify or enlarge neither this warranty nor the exclusions, limitations and reservations.

I have read and understand the above instructions and warranty. Please complete both copies. **Warranty is invalid until signed and dealer copy is returned to the dealer.**

Date Purchased _____

Dealership _____

Model Number _____

Serial Number _____

Customer Signature _____

Date _____

Dealer Signature _____

Date _____

Dealer Copy

(Dealer to remove this page and keep)

TABLE OF CONTENTS

DESCRIPTION	PAGE
To the New Owner / Operator	1
Four Models and Options	2
To the Dealer	3
Serial Number Location	4
Warranty	-
Table of Contents	5
Introduction	6
Operation Safety	7
Operating the Snowblower	8 & 9
Safety	10
Driveline Safety and Maintenance	11
Lower Lift Arm Brace	12
Decals	13
Decal Locations	14
800 Snowblower Exploded View and Parts List	15 & 16
900 Snowblower Exploded View and Parts List	17 & 18
1000 Snowblower Exploded View and Parts List	19 & 20
Power Take Off Breakdown	21 & 22
Hydraulic Hose Components	23
History - Gear Box and PTO Yoke Change	24
Hardware List	25
Index	26 - 28

INTRODUCTION

Congratulations on your choice of the large, tractor size, Black Max snow blower. It has been designed and manufactured to withstand the rugged demands of farm, commercial and industrial use.

Safe, efficient and trouble free operation of your snow blower requires that you and anyone else who will be operating or maintaining the snow blower, read and understand the safety, operation and maintenance information contained within this manual.



As noted on page 2, this manual covers two different models with two different PTO options of Black Max snow blowers. Differences are covered and explained where appropriate. Use the Table of Contents as a guide to locate required information.

Keep this manual handy for frequent reference and to pass on to new operators or owners. Call your Sheyenne dealer if you need assistance, information, or to obtain an additional copy of this manual.

OPERATOR ORIENTATION - The directions left, right, front and rear, are from a person standing behind the tractor and mounted snow blower facing forward. The augers are to the rear, as seen in the picture above.

Operation Safety



1. Disengage PTO, stop engine, and remove the key whenever you leave the tractor seat.
2. Disengage PTO, stop engine, and remove the key after striking a foreign object. Thoroughly inspect the snow blower before restarting the unit.
3. Disengage PTO, stop engine, and remove the key before attempting to service your snow blower or unplug the blower and spout.
4. Do not rotate the spout so the discharge material will be directed toward people, your tractor, windows, buildings, shrubs or any other object that could be damaged.
5. Rotating components can catch feet, hands, and loose clothing. Stand clear of all moving parts.
6. Do not climb or step on or over the snow blower for any reason.
7. Never operate the snow blower in inadequate light or poor visibility.
8. Disengage the PTO while raising, lowering, and transporting the snow blower.
9. Make sure to read and understand every Safety Sign on your machine.
10. Stay clear of the drive line at all times while PTO is engaged.
11. Do not bulldoze! Let the machine blow the snow...do not push the snow.
12. Know your surroundings. Know the area you are removing the snow from.
13. Do not allow anyone to ride on the snow blower at any time.
14. Keep all shields in place. Your safety is involved.

Preparation

OPERATING THE SNOWBLOWER

PRELIMINARY CHECK

As with any new piece of equipment, it is a good idea to give the unit a preliminary check before you begin to blow snow. Run the BLACK MAX SNOWBLOWER for a short period, then turn off the PTO, turn off the engine and remove the key. Make a careful inspection for loose bolts, roller chain alignment, binding parts, or any other irregularities. Correct any problems that may have occurred. A simple preliminary check may save you time and money by finding a small problem that might be a major problem in a snowstorm.

START UP

Make sure PTO is disengaged, engine shut off and the key removed.

All bearings have been pre-greased at the factory, but it is a good practice to re-grease them to remove any moisture that may have accumulated. Use your owner's manual as a reference for the following simple steps:

1. Grease all zerks:
 - a. One on each end of the augers.
 - b. Two on the PTO shaft.
 - c. One on the auger drive shaft by the shear bolt assembly.
2. Check oil level in gear box, if oil is needed use SAE 80/90 gear oil.
3. Check chain tightness. If the chain needs tightening or loosening, see instruction # 15 on page 11. (Cont.)

4. Use the top link of the tractor 3-point hitch to set the cutting edge angle and depth. Too deep will gouge lawns, dirt, gravel roads, etc. Too shallow will leave snow on the surfaces you wanted to clear.
5. Make sure the fan and augers are free of any loose objects. Check to see if all the shields and guards are in place and in good condition. Lubricate the snow blower after each use.

OPERATING YOUR BLACK MAX SNOWBLOWER

After starting the tractor engine, engage the PTO. Ease the tractor clutch out and back slowly into the snow. The sound of the tractor will let you judge when the snow blower is taking in too much snow or has reserve capacity. Remember to disengage the PTO when raising the snow blower. Allow the snow to be cleared from the snow blower by stopping the tractor motion. Shallow snowbanks can normally be cleared in one pass, depending on the density of the snow and the tractor size.

The most effective method of moving snow is to blow the snow as high as possible downwind, if room permits. The spout deflector will allow you to adjust the height that the snow is blown. Reducing the tractor speed will reduce the distance the snow is blown and the force of the discharge will be less.

Always be aware of where you are blowing the snow. DO NOT blow snow toward people, windows, vehicles, buildings, pets, livestock, your tractor, shrubbery, or any other object that may be damaged.

Changing the direction of the chute while it's running full of snow isn't a good practice. The rotating mechanism is put under extra strain.

SAFETY

Sheyenne Tooling & Mfg. has designed this Snow blower with safety as the main concern. Please read the following safety information before you operate this machine. In addition, make sure every individual, who will operate or work with this machine, is familiar with these safety precautions.

The use of the words CAUTION, WARNING, or DANGER on the machine signals three degrees of hazards. CAUTION is used for general reminders of good safety practices or directs attention to unsafe practices. WARNING is used to denote a SPECIFIC POTENTIAL HAZARD. DANGER is used to denote the MOST SERIOUS OF HAZARDS!



GENERAL SAFETY

Here are some of the general SAFETY PROCEDURES ABOUT YOUR SNOWBLOWER.

1. Make sure all the SAFETY SIGNS are readable and in good condition.
2. Know how to shut off the machine before starting.
3. Make sure the machine is clear of loose or foreign objects (tools, branches, rocks etc.)
4. Never attempt to service the machine or drive line while the unit is still engaged and running.
5. Keep children, pets and spectators away from the machine at all times.
6. Keep hands, feet and loose clothing away from moving or power- driven parts.
7. **DO NOT** step on or climb over the machine for any reason.
8. Keep all guards and shields in place and in good working condition to assure top performance and maximum safety.
9. Rotating components can catch hands, feet and loose clothing. STAND CLEAR of these areas.
10. NEVER allow anyone to ride on the Snow blower.
11. Before servicing or inspecting the Snow blower, turn off the tractor engine and remove the key.
12. **FAILURE TO FOLLOW SAFETY INSTRUCTIONS COULD RESULT IN SERIOUS INJURY OR EVEN DEATH TO THE OPERATOR OR SPECTATORS!**

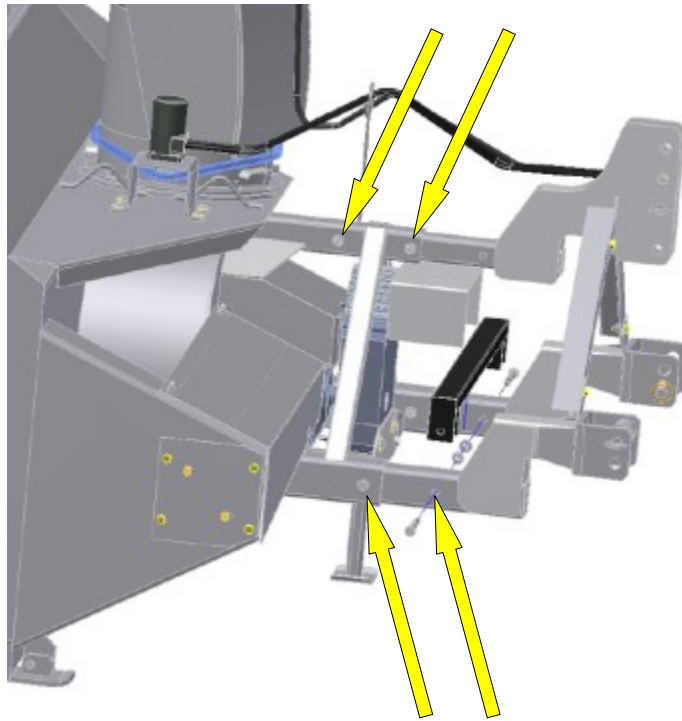


DRIVELINE SAFETY INSTRUCTIONS
AND MAINTENANCE PROCEDURES:

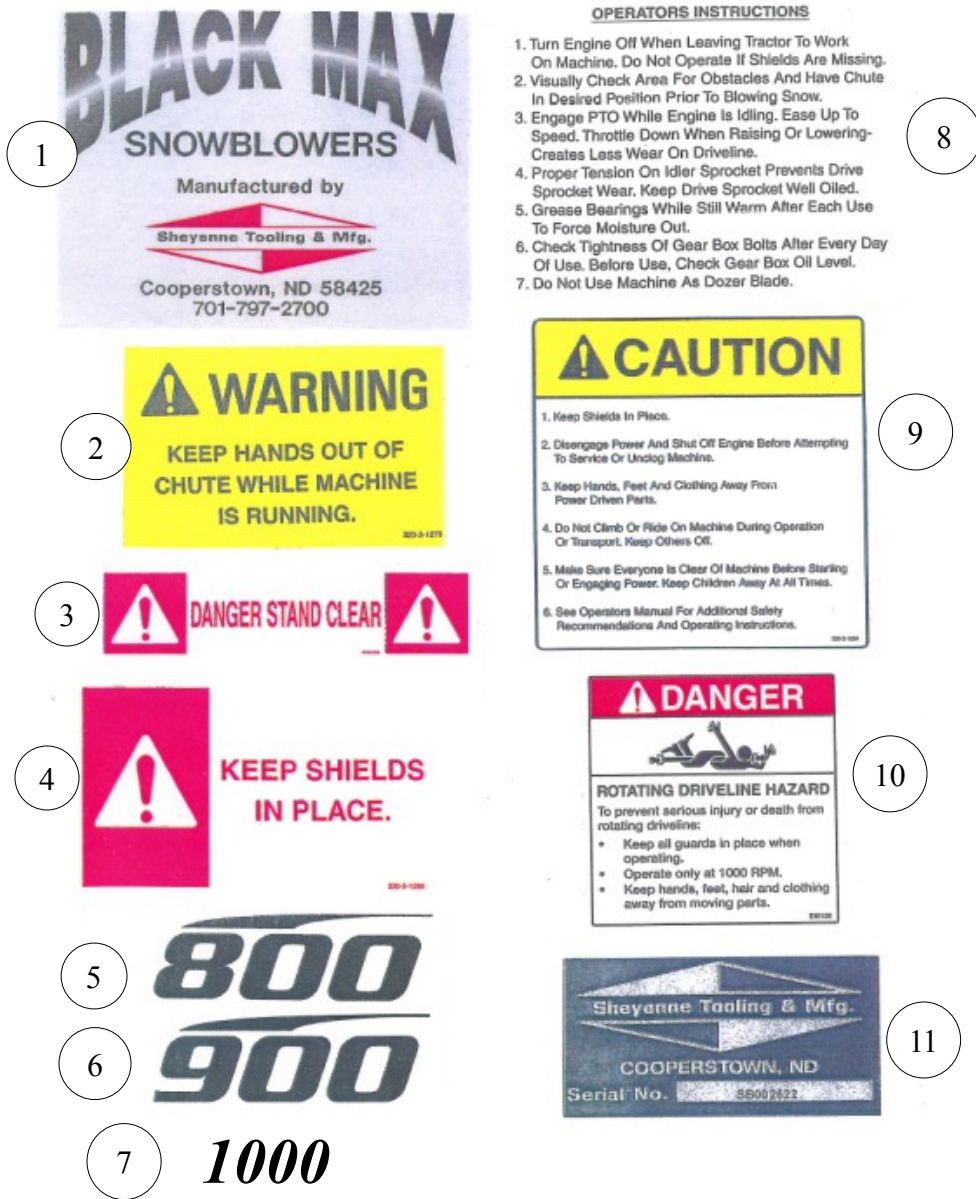
1. Use only attachments and accessories designed for your machine. See your dealer for a complete list of approved attachments and accessories.
2. Keep drive line shield in place – DO NOT REMOVE. Never operate your snow blower when drive line shields are damaged or missing. These shields have been installed for your safety. Personal injury or even death can result from entanglement in rotating components.
3. DO NOT operate your snow blower with a drive line that is too long or with a dented shield. This will not allow the shaft to telescope freely. Operating under these conditions can cause damage to the snow blower, drive line knuckles, or your tractor.
4. Keep the drive line well greased or oiled. (Oil should be used in severe cold)
5. Make sure the third arm on the tractor three point will have the snow blower sitting level and resting on the skid shoes. This will keep the knuckles on the drive line running as straight as possible.
6. Raising the snow blower unnecessarily high while the PTO is engaged can cause severe damage to the drive line and the tractor.
7. Operating the drive line at an excessive angle will shorten the life of the drive line.
8. DANGER! Rotating drive line. Personal injury or even death can result from entanglement. STAY COMPLETELY CLEAR OF DRIVELINE WHILE PTO IS ENGAGED!
9. If your drive line is making a “chattering” noise, you may be running at too steep an angle.
10. When mounting your BLACK MAX snow blower, adjust the length of the PTO shaft by adjusting the 3-point mounting arms. The minimum compressed length between the knuckles is 26 inches and the maximum extended length between the knuckles is 36 inches. It is recommended that the operating length be adjusted as close to the 36 inch length as possible.
11. Your drive line must have at least 5” of overlap.
12. Grease the drive line before operating your snow blower.
13. Your BLACK MAX snow blower has shear bolt protection in two places. Both are shown on pages 12 & 13. Item #5 protects gearbox to PTO assembly and Item #24 protects in the drive line, augers to gearbox.
14. Drive line shear protection should be serviced annually. Grease the shear plate/sprocket assembly. Remove the shear bolt and turn either half of the drive to assure free rotation. Reassemble or replace the shear bolt.
15. The auger drive chain is tightened by adjusting the idler sprocket, Item #10, shown on pages 16 & 17. Properly adjusted, the chain should move up & down approximately one half inch.
16. Every couple of years, you may want to replace the cross kits in your PTO assembly.

INSTALLATION INSTRUCTIONS FOR OPTIONAL BRACE WELDMENT, 800, 900 & 1000 BLACK MAX SNOW BLOWERS.

The snow blower three point hitch mounting arms can be mounted in two positions, see the yellow arrows. The telescoping function of the snow blower PTO shaft and the tractor PTO shaft's relative position to the holes in it's three point hitch arms will determine which position is best. Do not allow the PTO to “bottom out” or to disengage.



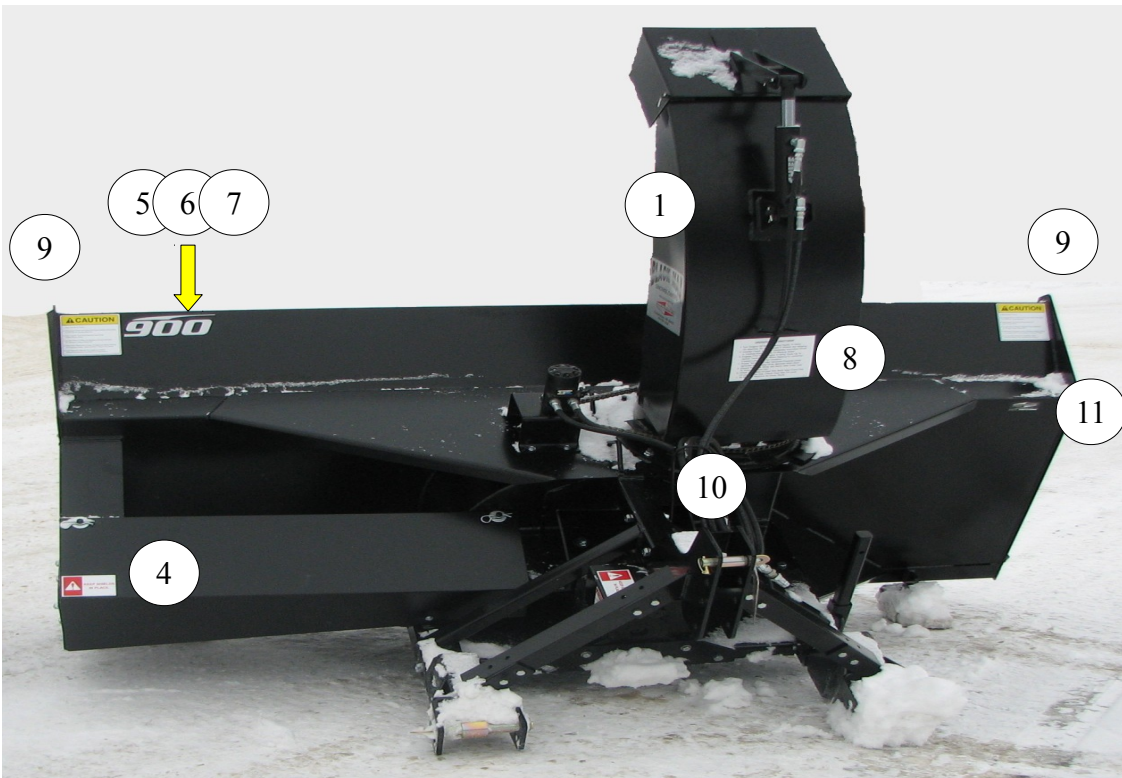
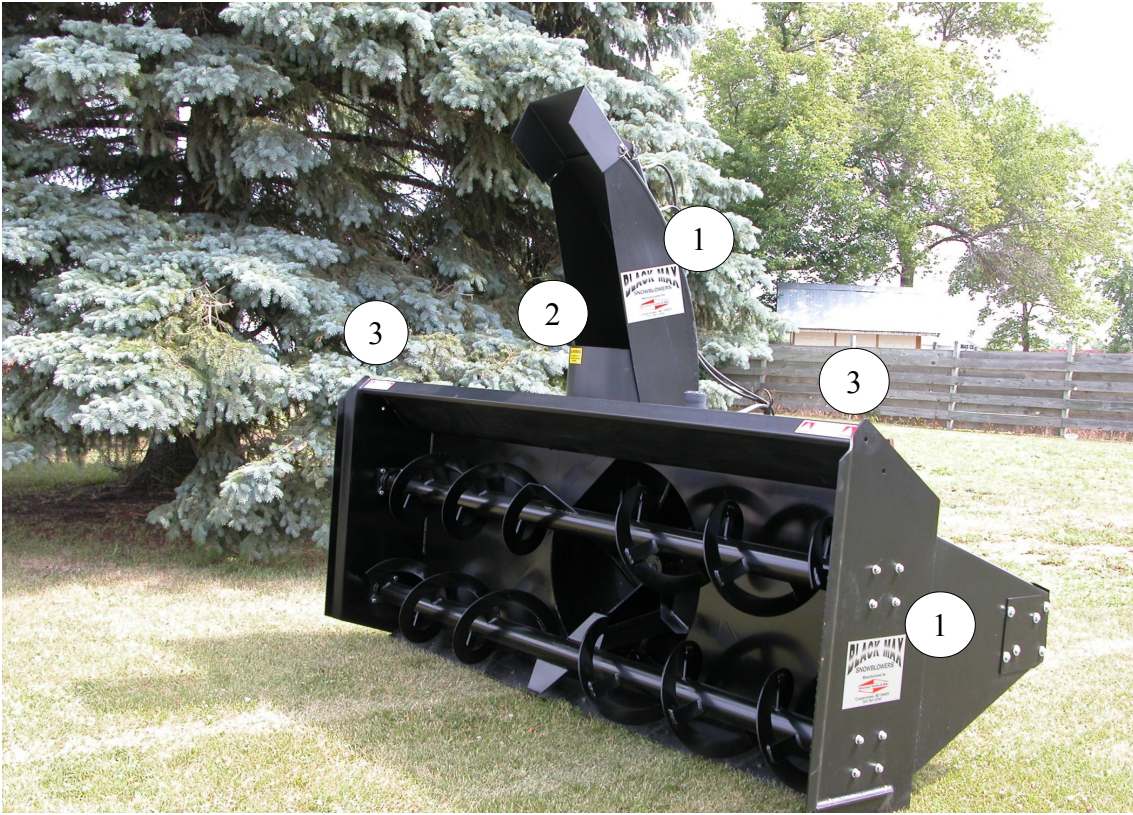
If it is determined that the arms should be extended, as shown above, install the brace weldment (part # 320-2-1190 - black colored) across the lower arms as illustrated. Additional strength and stability is gained. Failure to install this brace on extended arms will likely result in tube failure and void the warranty.

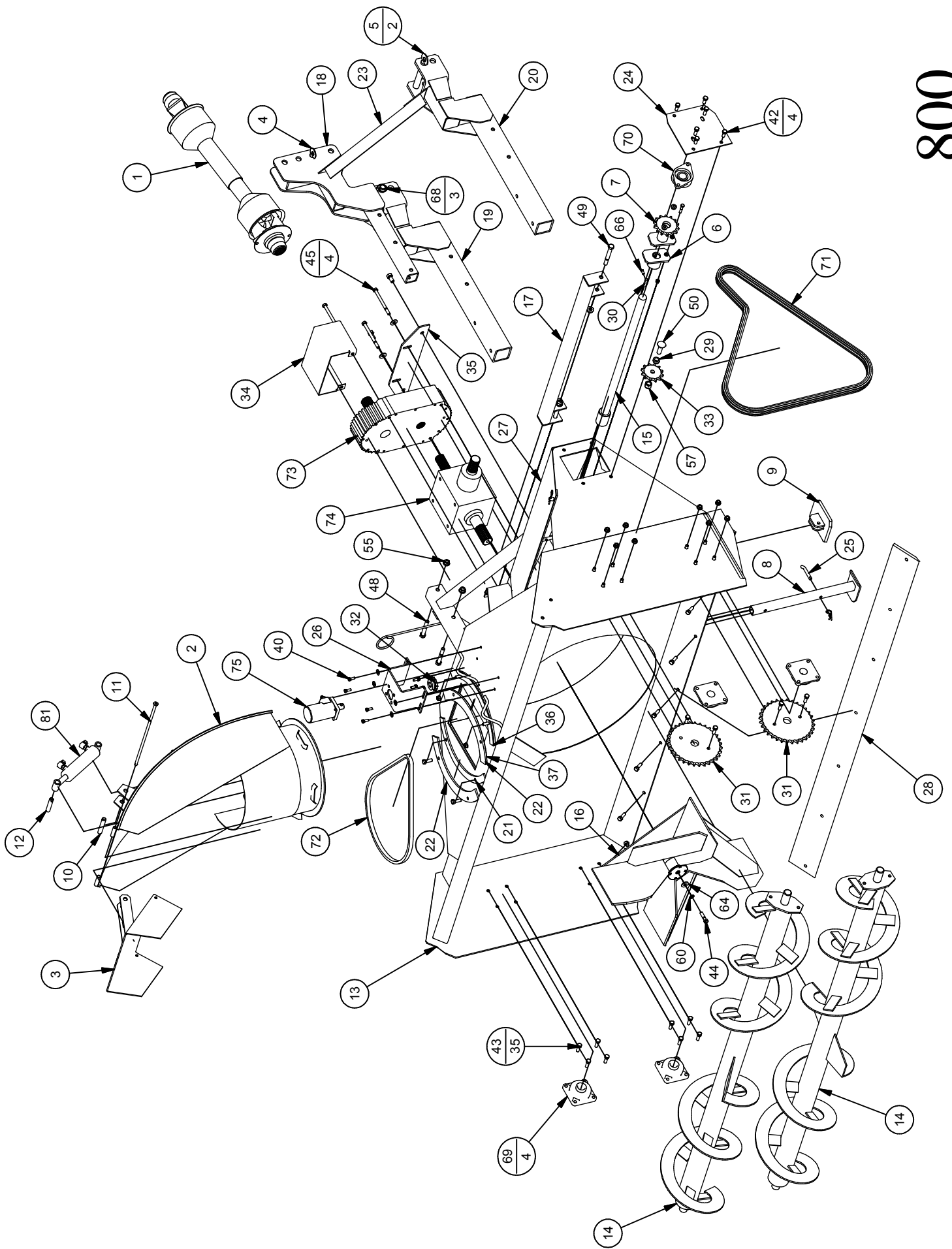


DECALS

ITEM	QTY	PART NO.	DESCRIPTION
1	4	320-3-1269	Decal, Black Max
2	1	320-3-1270	Decal, Warning
3	2	320-3-1268	Decal, Danger Stand Clear
4	1	320-3-1266	Decal, Keep Shields in Place
5	1	320-3-1274	Decal, 800
6	1	320-3-1275	Decal, 900
7	1	320-3-1958	Decal, 1000
8	1	320-3-1267	Decal, Operators Instructions
9	2	320-3-1264	Decal, Caution
10	2	320-3-1265	Decal, Danger – Rotating Drive line
11	1	320-3- 1271	Serial Number - See Page 4 for Location

DECAL LOCATIONS



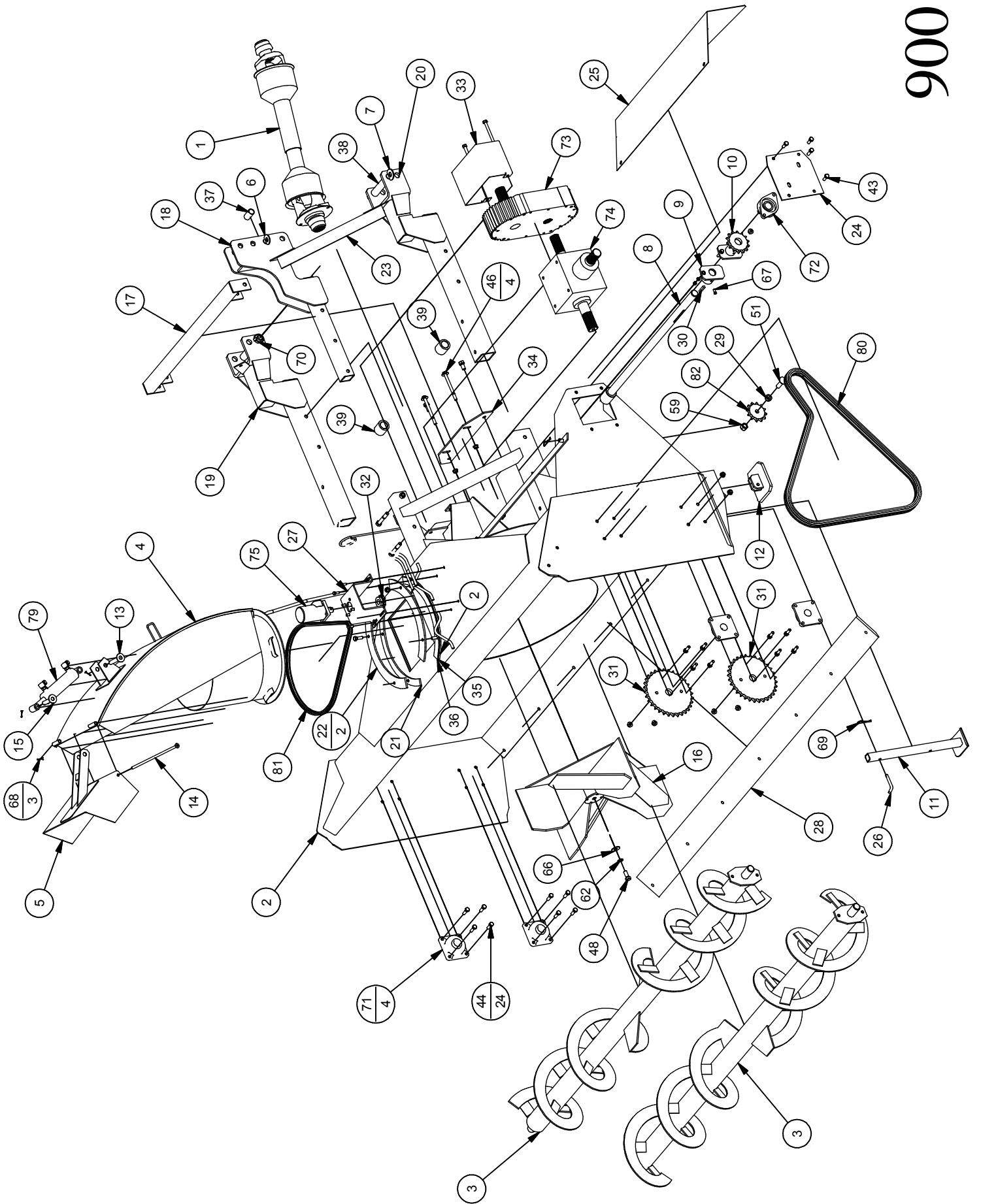


800

Parts List				Parts List			
ITEM	QTY	PART NUMBER	DESCRIPTION	ITEM	QTY	PART NUMBER	DESCRIPTION
1	1	320-1-0141 OR	320-1-0141 IS 1-3/8"-21,	43	35	900-01225	1/2NC X 1-1/2 HEX BOLT G5
		320-1-0142	320-1-0142 IS 1-3/4"-20.	44	3	900-01229	1/2NC X 2 HEX BOLT GR5
2	1	320-2-1007	SPOUT W/A	45	4	900-01253	1/2-13 X 6 GR 5 HHCS
3	1	320-2-1009	DEFLECTOR W/A	46	2	900-01339	5/8-11 X 1-1/4 GR 5 HHCS
4	1	320-2-1014	PIN W/A, UPR - 3 POINT	47	8	900-01341	5/8 NC X 1-1/2 HEX BOLT GR5
5	2	320-2-1015	PIN W/A LWR 3 POINT	48	2	900-01361	5/8-11 X 4 GR 5 HHCS
6	1	320-2-1017	SHEAR PLATE W/A	49	6	900-01365	5/8 NC X 5 HHCS GR5
7	1	320-2-1018	SPROCKET, SHEAR W/A	50	1	900-01804	3/4 NC X 2-1/2 CARR. BOLT GR 5
8	1	320-2-1019	JACK STAND W/A	51	1	900-06001	1/4" HEX NUT
9	2	320-2-1020	SHOE, DEPTH	52	1	900-06005	3/8 - 16 HEX NUT
10	1	320-2-1021	PIN, LOWER CYLINDER	53	4	900-06139	3/8 NC SERR FLANGE NUT
11	1	320-2-1022	PIN W/A, DEFLECTOR	54	46	900-06143	1/2 NC SERR FLANGE NUT
12	1	320-2-1023	PIN, UPPER CYLINDER	55	10	900-06145	5/8NC SERR FLANGE NUT
13	1	320-2-1024	FRAME W/A, MAIN 8'	56	2	900-06588	1/2 Std NC Nylock Nut
14	2	320-2-1025	AUGER W/A 8'	57	1	900-06594	3/4 Std NC Nylock Nut
15	1	320-2-1026	DRIVE SHAFT W/A	58	1	900-11009	1/4" LOCK WASHER
16	1	320-2-1168	BLOWER FAN WELDMENT	59	5	900-11011	3/8 LOCKWASHER
17	1	320-2-1190 *	BRACE, BOTTOM ARM	60	1	900-11013	1/2" SPLIT LOCK WASHER
18	1	320-2-1255	ARM W/A, UPR 3 POINT	61	8	900-11015	5/8 LOCKWASHER
19	1	320-2-1258	ARM W/A,LWR 3 POINT	62	2	900-11031	1/4 FLATWASHER
20	1	320-2-1259	ARM W/A,LWR 3 POINT-RH	63	4	900-11033	3/8 USS FLATWASHER
21	1	320-3-1052	RETAINER, LOWER SPOUT	64	3	900-11035	1/2" USS FLATWASHER
22	2	320-3-1053	RETAINER, UPPER SPOUT	65	8	900-11037	5/8 USS FLATWASHER ZP
23	2	320-3-1060	ANGLE, STRUT	66	1	900-16031	3/8 NC X 3/4 SQ. HD SET SCW CUP PT
24	1	320-3-1065	PLATE, ADJUSTABLE BEARING	67	3	900-25005	R HITCH PIN #9
25	1	320-3-1075	PIN, JACK STAND	68	3	900-25012	7/16 x 1 3/4 Lynch Pin
26	1	320-3-1078	BRACKET, HYD. MOTOR	69	4	901-01006	1-1/2 4 BOLT FLANGE BRG
27	1	320-3-1088	SHIELD, DRIVE SHAFT- 800	70	1	901-01308	1-1/2" 2 BOLT FLANGE BRG
28	1	320-3-1089	CUTTING EDGE - 8"-95"	71	1	903-03135	CHAIN, 80R-106P
29	1	320-3-1090	BUSHING, IDLER-TRACTOR	72	1	903-03142	CHAIN, 50R-108
30	1	320-3-1092	KEY, 3/8 X 2	73	1	903-15648	7635 GEARBOX, 8 & 900
31	2	320-3-1214	#80 CHAIN X 32 TOOTH	74	1	903-15649	7636 GEARBOX, 8 & 900
32	1	320-3-1277	SPROCKET, 5012 "BORE	75	1	904-05529	HYD. MOTOR 9.7 CHARLYNN 101-1012
33	1	320-3-1295	8012 IDLER SPROCKET	76 **	2	904-06012	3/8" HYD. HOSE, 10MB-8MP-10FT
34	1	320-3-1568	8 & 900 PTO SHIELD	77	1	904-06013	1/4" HYD. HOSE, 6MP-8MP-10FT
35	1	320-3-1590	BRACE, GEARBOX	78	2	904-08043	ADAPTER, 6MJ-10MB Straight
36	1	320-3-1703	SPACER, SPOUT-7G	79	2	904-08049	ELBOW, 6FPX-8MB-90
37	1	320-3-1704	SPACER, SPOUT-14G	80	2	905-19007	PIONEER QUIJK COUPLER 3/4 ORB
38	1	900-01005	1/4-20 x 3/4 GR 5 HHCS	81	1	905-21209	CYLINDER, 2 X 6 12.5 RET.
39	1	900-01013	1/4NC X 1-1/2 HEX BOLT GR5				
40	8	900-01109	3/8-16 X 1 GR 5 HHCS				
41	1	900-01117	3/8 - 16 X 2 GR 5 HHCS				
42	4	900-01223	1/2-13 X 1-1/4 GR 5 HHCS				

* See page 12 for purpose and application of this part.

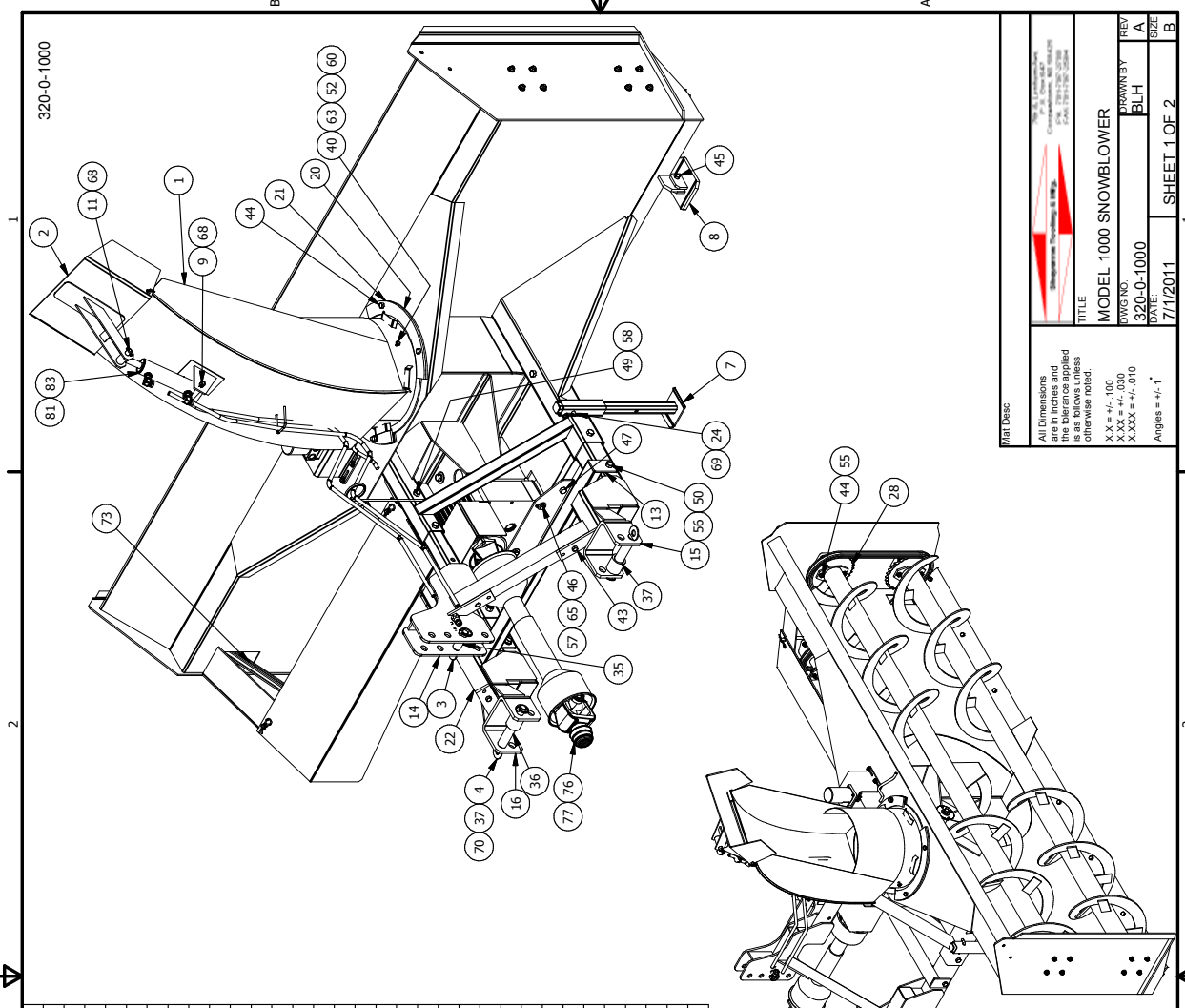
** Items 76 through 80, are listed here but not shown on view above.
See page 23.



Parts List				Parts List			
ITEM	QTY	PART NUMBER	DESCRIPTION	ITEM	QTY	PART NUMBER	DESCRIPTION
1	1	320-1-0141 OR 320-1-0142	320-1-0141 IS 1-3/8" -21, 320-1-0142 IS 1-3/4" - 20.	43	15	900-01223	1/2-13 X 1-1/4 GR 5 HHCS
2	1	320-2-1000	FRAME W/A, MAIN-900	44	24	900-01225	1/2NC X 1-1/2 HEX BOLT G5
3	2	320-2-1003	AUGER W/LD, 9'	45	2	900-01229	1/2NC X 2 HEX BOLT GR5
4	1	320-2-1007	SPOUT W/A	46	4	900-01253	1/2-13 X 6 GR 5 HHCS
5	1	320-2-1009	DEFLECTOR W/A	47	2	900-01339	5/8-11 X 1-1/4 GR 5 HHCS
6	1	320-2-1014	PIN W/A, UPR - 3 POINT	48	9	900-01341	5/8 NC X 1-1/2 HEX BOLT GR5
7	2	320-2-1015	PIN W/A LWR 3 POINT	49	2	900-01361	5/8-11 X 4 GR 5 HHCS
8	1	320-2-1016	DRIVE SHAFT WELDMENT	50	6	900-01365	5/8 NC X 5 HHCS GR5
9	1	320-2-1017	SHEAR PLATE W/A	51	1	900-01804	3/4 NC X 2-1/2 CARR. BOLT GR 5
10	1	320-2-1018	SPROCKET, SHEAR W/A	52	1	900-06001	1/4" HEX NUT
11	1	320-2-1019	JACK STAND W/A	53	1	900-06005	3/8 - 16 HEX NUT
12	2	320-2-1020	SHOE, DEPTH	54	4	900-06139	3/8 NC SERR FLANGE NUT
13	1	320-2-1021	PIN, LOWER CYLINDER	55	49	900-06143	1/2 NC SERR FLANGE NUT
14	1	320-2-1022	PIN W/A, DEFLECTOR	56	4	900-06145	5/8NC SERR FLANGE NUT
15	1	320-2-1023	PIN, UPPER CYLINDER	57	2	900-06588	1/2 Std NC Nylock Nut
16	1	320-2-1168	BLOWER FAN WELDMENT	58	6	900-06592	5/8 Std NC Nylock Nut
17	1	320-2-1190 *	BRACE, BOTTOM ARM	59	1	900-06594	3/4 Std NC Nylock Nut
18	1	320-2-1255	ARM W/A , UPR 3 POINT	60	1	900-11009	1/4" LOCK WASHER
19	1	320-2-1258	ARM W/A,LWR 3 POINT	61	5	900-11011	3/8 LOCKWASHER
20	1	320-2-1259	ARM W/A,LWR 3 POINT-RH	62	9	900-11015	5/8 LOCKWASHER
21	1	320-3-1052	RETAINER, LOWER SPOUT	63	1	900-11031	1/4 FLATWASHER
22	2	320-3-1053	RETAINER, UPPER SPOUT	64	4	900-11033	3/8 USS FLATWASHER
23	2	320-3-1060	ANGLE, STRUT	65	4	900-11035	1/2" USS FLATWASHER
24	1	320-3-1065	PLATE, ADJUSTABLE BEARING	66	9	900-11037	5/8 USS FLATWASHER ZP
25	1	320-3-1071	SHIELD, DRIVE SHAFT-900	67	1	900-16031	3/8 NC X 3/4 SQ. HD SET SCW CUP PT
26	1	320-3-1075	PIN, JACK STAND	68	3	900-23025	1/8 X 1 COTTER PIN
27	1	320-3-1078	BRACKET, HYD. MOTOR	69	3	900-25005	R HITCH PIN #9
28	1	320-3-1079	CUTTING EDGE - 9'-107"	70	3	900-25012	7/16 x 1 3/4 Lynch Pin
29	1	320-3-1090	BUSHING, IDLER-TRACTOR	71	4	901-01006	1-1/2 4 BOLT FLANGE BRG
30	1	320-3-1092	KEY, 3/8 X 2	72	1	901-01308	1-1/2" 2 BOLT FLANGE BRG
31	2	320-3-1214	#80 CHAIN X 32 TOOTH	73	1	903-15648	7635 GEARBOX, 8 & 900
32	1	320-3-1277	SPROCKET, 5012 1"BORE	74	1	903-15649	7636 GEARBOX, 8 & 900
33	1	320-3-1568	8 & 900 PTO SHIELD	75	1	904-05529	HYD. MOTOR 9.7 CHARLYNN 101-1012
34	1	320-3-1590	BRACE, GEARBOX	76 **	2	904-06012	3/8" HYD. HOSE
35	1	320-3-1703	SPACER, SPOUT-7G	77	2	904-08049	ELBOW, 6FPX-8MB-90
36	1	320-3-1704	SPACER, SPOUT-14G	78	2	905-19003	PIONEER QUICK COUPLER 8010-4P
37	1	320-3-1855	UPPER 3 PT BUSHING	79	1	905-21209	CYLINDER, 2 X 6 12.5 RET.
38	2	320-3-1856	LOWER 3 PT BUSHING	80	1	903-03135	CHAIN, 80R-106P
39	2	320-3-1857	SPACER BUSHING-3 PT	81	1	903-03142	CHAIN, 50R-108
40	1	900-01013	1/4NC X 1-1/2 HEX BOLT GR5	82	1	320-3-1295	IDLER SPROCKET
41	8	900-01109	3/8-16 X 1 GR 5 HHCS				
42	1	900-01117	3/8 -16 X 2 GR 5 HHCS				

* See page 12 for purpose and application of this part.

** Items 76, 77 & 78 are listed here but not shown on view above.
See page 23.



PARTS LIST		PARTS LIST		PARTS LIST			
ITEM	QTY	PART NUMBER	DESCRIPTION	ITEM	QTY	PART NUMBER	DESCRIPTION
1	1	320-2-1007	SPOUT W/A	53	1	900-06005	3/8 - 16 HEX NUT
2	1	320-2-1009	DEFLECTOR W/A	54	4	900-06139	3/8 NC SERR FLANGE NUT
3	1	320-2-1014	PIN W/A, UPR - 3 POINT	55	50	900-06143	1/2 NC SERR FLANGE NUT
4	2	320-2-1015	PIN W/A, LWR 3 POINT	56	4	900-06145	5/8NC SERR FLANGE NUT
5	1	320-2-1017	SHEAR PLATE W/A	57	2	900-06588	1/2 Std NC Nylock Nut
6	1	320-2-1018	SPROCKET, SHEAR W/A	58	6	900-06592	5/8 Std NC Nylock Nut
7	1	320-2-1019	JACK STAND W/A	59	1	900-06594	3/4 Std NC Nylock Nut
8	2	320-2-1020	SHOE, DEPTH	60	1	900-11009	1/4" LOCK WASHER
9	1	320-2-1021	PIN, LOWER CYLINDER	61	5	900-11011	3/8 LOCKWASHER
10	1	320-2-1022	PIN W/A, DEFLECTOR	62	9	900-11015	5/8 LOCKWASHER
11	1	320-2-1023	PIN, UPPER CYLINDER	63	1	900-11031	1/4 FLATWASHER
12	1	320-2-1168	BLOWER FAN WELDMENT	64	4	900-11033	3/8 USS FLATWASHER
13	1	320-2-1190	BRACE, BOTTOM ARM	65	4	900-11035	1/2" USS FLATWASHER
14	1	320-2-1255	ARM W/A, UPR 3 POINT	66	9	900-11037	5/8 USS FLATWASHER ZP
15	1	320-2-1258	ARM W/A, LWR 3 POINT	67	1	900-16031	3/8 NC X 3/4 SQ, HD SET SCW CLIP PT
16	1	320-2-1259	ARM W/A, LWR 3 POINT-RH	68	3	900-23025	1/8 X 1 COTTER PIN
17	1	320-2-1283	FRAME W/A, MAIN-1000	69	3	900-25005	R-HITCH, PIN #9
18	1	320-2-1287	DRIVE SHAFT W/A, 10 FT	70	3	900-25012	7/16 x 1.3/4 Lynch Pin
19	2	320-2-1288	AUGER WIDMNT, 10"	71	4	901-01006	1-1/2 4 BOLT FLANGE BRG
20	1	320-3-1052	RETAINER, LOWER SPOUT	72	1	901-01308	1-1/2" 2 BOLT FLANGE BRG
21	2	320-3-1053	RETAINER, UPPER SPOUT	73	1	903-03135	#80 AUGER DRIVE CHAIN
22	2	320-3-1060	ANGLE, STRUT	74	1	903-15648	7635 GEARBOX, 8 & 900
23	1	320-3-1065	PLATE, ADJUSTABLE BEARING	75	1	903-15649	7636 GEARBOX, 8 & 900
24	1	320-3-1075	PIN, JACK STAND	76	1	903-18057	FULL PTO 1-3/8-21
25	1	320-3-1078	BRACKET, HYD. MOTOR	77	1	903-18058	FULL PTO 1-3/4-20
26	1	320-3-1090	BUSHING, IDLER-TRACTOR	78	1	904-05529	HYD. MOTOR 9.7 CHARLYNN 101-1012
27	1	320-3-1092	KEY, 3/8 X 2	79	1	904-06012	HYD. HOSE - ROTATE MOTOR-3/8" (NOT SHOWN)
28	2	320-3-1214	#80 CHAIN X 32 TOOTH	80	2	904-06013	HYD. HOSE - CYLINDER-1/4"
29	1	320-3-1277	SPROCKET, 5012 1" BORE	81	2	904-06049	ELBOW, 6FPX-8MB-90
30	1	320-3-1295	8012 IDLER SPROCKET	82	4	905-19003	PIONEER QUICK COUPLER 8010-4P
31	1	320-3-1568	8 & 900 PTO SHIELD	83	1	905-21209	CYLINDER, 2 X 6 12.5 RET.
32	1	320-3-1590	BRACE, GEARBOX				
33	1	320-3-1703	SPACER, SPOUT-7G				
34	1	320-3-1704	SPACER, SPOUT-14G				
35	1	320-3-1855	UPPER 3 PT BUSHING				
36	2	320-3-1856	LOWER 3 PT BUSHING				
37	2	320-3-1857	SPACER BUSHING-3 PT				
38	1	320-3-1946	SHIELD, DRIVE SHAFT-900				
39	1	320-3-1950	CUTTING EDGE - 10"-119"				
85	1	320-3-1958	DECAL, 1000 (NOT SHOWN)				
40	1	900-01013	1/4NC X 1-1/2 HEX BOLT GR5				
41	8	900-01109	3/8-16 X 1 GR 5 HHCS				
42	1	900-01117	3/8 -16 X 2 GR 5 HHCS				
43	16	900-01223	1/2-13 X 1-1/4 GR 5 HHCS				
44	24	900-01225	1/2NC X 1-1/2 HEX BOLT G5				
45	2	900-01229	1/2NC X 2 HEX BOLT GR5				
46	4	900-01253	1/2-13 X 6 GR 5 HHCS				
47	2	900-01339	5/8-11 X 1-1/4 GR 5 HHCS				
48	9	900-01341	5/8 NC X 1-1/2 HEX BOLT GR5				
49	2	900-01361	5/8-11 X 4 GR 5 HHCS				
50	6	900-01365	5/8 NC X 5 HHCS GR5				
51	1	900-01804	3/4 NC X 2-1/2 CARR. BOLT GR 5				
52	1	900-06001	1/4" HEX NUT				

TITLE: MODEL 1000 SNOWBLOWER

 DWGS NO: 320-0-1000

 DATE: 7/1/2011

 REV: BROWNBY

 SIZE: BLH

 SHEET 1 OF 2

All Dimensions are in inches and the tolerance applied is as follows unless otherwise noted:

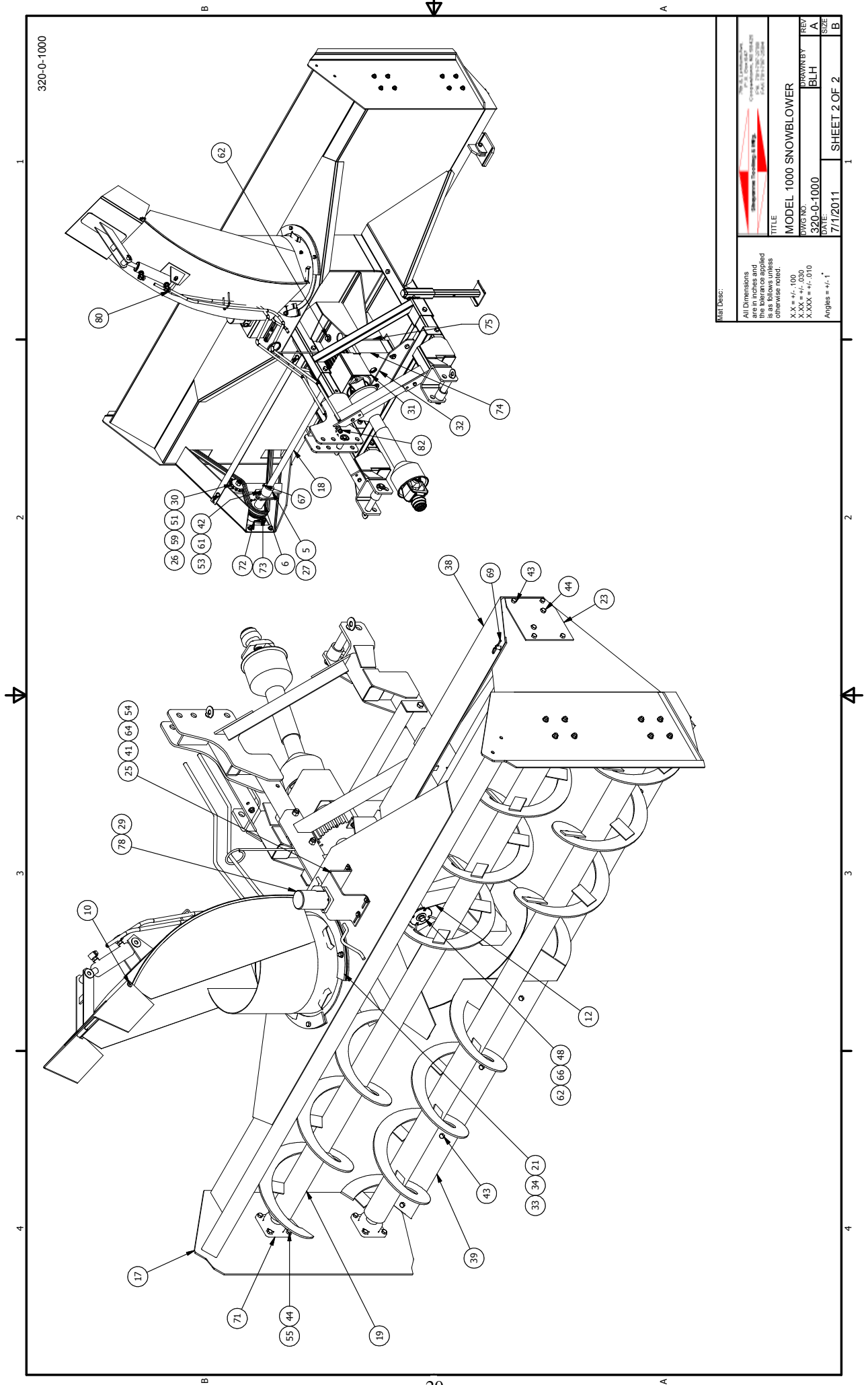
 X.X = +/- .100

 X.XX = +/- .010

 X.XXX = +/- .005

 Angles = +/- 1°

320-0-1000



MFG Desc:
 All Dimensions
 are in inches and
 the tolerance applied
 is as follows unless
 otherwise noted:
 X.X = +/- .100
 X.XXX = +/- .010
 Angles = +/- 1°

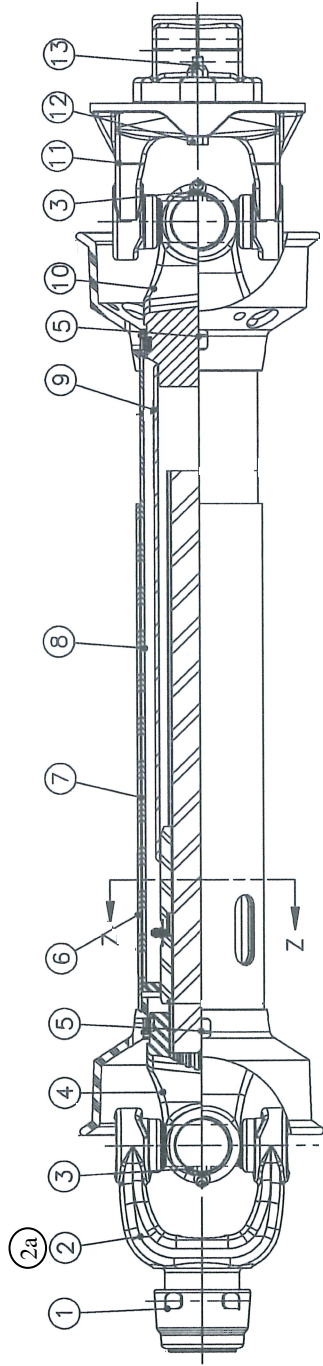
TITLE MODEL 1000 SNOWBLOWER	
DWG NO. 320-0-1000	DRAWN BY BLH
DATE 7/1/2011	REV A
SHEET 2 OF 2	

1000

14

15

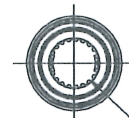
16



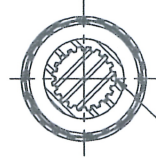
**Tractor
Half**

**Center
Telescope**

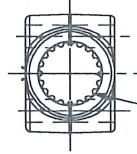
**Implement
Half**



1-3/8 - 21 Spline
or
1-3/4 - 20 Spline



Phase
Section Z - Z



1-3/4 - 20 Spline

**Power
Take-Off**

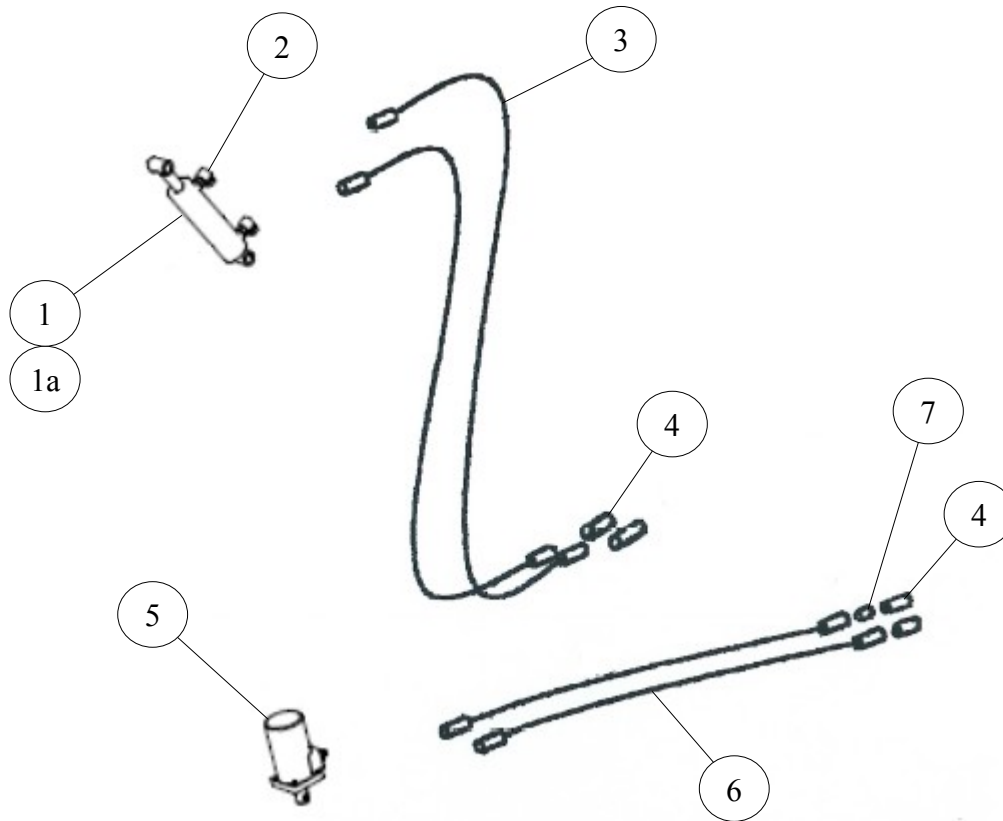
PTO Parts List

Item #	Qty	Part #	Description	Mfr part no.
1	1	903-18007	SSL/Auto-Lok Repair Kit	26-15120
2	1	903-18041	Safety Slide Lock Yoke Assy, 1-3/8-21 Spline	55011-1001
2a	1	903-18042	Safety Slide Lock Yoke Assy, 1-3/4-20 Spline	55041-1001
3	2	903-18034	55R Cross and Bearing Kit	03-10050
4	1	903-18040	Yoke and Shaft (1.69-20 Spline)	99-19177
5	2	903-18074	Guard Repair Kit	19-11106
6	1	903-18016	Safety Sign	13-10021
7	1	903-18035	Outer Guard	97-19177
8	1	903-18039	Inner Guard	96-19177
9	1	903-18018	Safety Sign	13-10022
10	1	903-18037	Yoke, Tube and Slip Sleeve	98-19177
11	1	903-18073	Ball Shear Assy	40-10021
12	2	900-01067	Bolt, 5/16-18 x 2.00 Long - Grade 5 (Shear bolt)	11-14616
13	2	900-06498	Locknut, 5/16-18	11-10044
14	1	903-18043	Tractor Half, with Guard - 1-3/8-21 Spline	93-19177
15	1	903-18044	Tractor Half, with Guard - 1-3/4-20 Spline	93-19712
16	1	903-18072	Implement Half, with Guard - 1-3/4-20 Spline	92-24689

1	903-18057	Complete PTO, 1-3/8-21 Spline	262-24689
1	903-18058	Complete PTO, 1-3/4-20 Spline	262-24689

55R PTO Drive Shaft with Ball Shear Protection and Safety Guard - Manufacturer / Weasler

HYDRUALIC COMPONENTS



ITEM	PART NO.	DESCRIPTION	QTY
Deflector cylinder and hydraulic motor initially shown on pages 15 and 17			
1	905-21230	Cylinder, hydraulic (Current)	1
1a	905-21209	Cylinder, hydraulic (Service part)	-
2	904-08049	Elbow, 90 degree	2
3	904-06013	1/4" Hydraulic Hose Assembly, Cylinder	2
4	905-19003	8010-4P Pioneer Coupler	4
5	904-05529	Motor, hydraulic – 9.7 cu in	1
6	904-06012	3/8" Hydraulic Hose Assembly, Motor	2
7	904-08012	In-Line Restrictor *	1

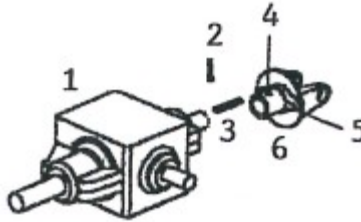
* The in-line restrictor must not be removed. Smooth rotating movement of the spout depends on it.

GEAR BOX CHANGE

Sheyenne Tooling and Mfg was compelled to make a significant engineering change to our model's 800 and 900 Black Max snow blowers when our supplier discontinued the gear box we were buying. The old gear box had the shaft configuration and reduction that we needed all in one box. No replacement was available. The solution was one reduction box and a second box with through shaft and right angle shaft. This production change occurred in the fall of 2007. The first **800** with the new boxes had a serial number of **SB002241**. The first **900** had a serial number of **SB002247**.

This page will apply to owners of snow blowers with the older single gear box. Complete replacement gear boxes are not available. However; some of the internal parts are available on a limited basis. You may contact us, inquire and we will work with the parts supplier.

Below is an isometric view and parts list of the single gear box and the PTO yoke that drives it.



ITEM	PART NO.	DESCRIPTION	QTY
1	903-15615	Gear Box	1
2	900-01129	3/8 x 3-1/2 Gr 5 Hex Head Bolt	1
	900-06500	3/8 Lock Nut	1
3	320-3-1092	3/8 Square x 2 Key	2
4	900-16030	3/8 x 1/2 Square Head Set Screw	2
5	900-01067	5/16 x 2 Gr 5 Hex Head Shear Bolt	2
	900-06498	5/16 Lock Nut	2
6	903-18033	Ball Shear Assembly - Both Halves / Round Hole	1

For anyone wishing to compare this gear box to the others, you can find them on pages 15 & 17.

HARDWARE

NUTS		WASHERS	
PART NO.	DESCRIPTION	PART NO.	DESCRIPTION
900-06194	3/16 NC Hex Nut	900-11007	3/16 Lock Washer
900-06001	1/4 NC Hex Nut	900-11009	1/4 Lock Washer
900-06003	5/16 NC Hex Nut	900-11010	5/16 Lock Washer
900-06005	3/8 NC Hex Nut	900-11011	3/8 Lock Washer
900-06007	7/16 NC Hex Nut	900-11012	7/16 Lock Washer
900-06009	1/2 NC Hex Nut	900-11013	1/2 Lock Washer
900-06010	1/2 NF Hex Nut	900-11014	9/16 Lock Washer
900-06011	9/16 NC Hex Nut	900-11015	5/8 Lock Washer
900-06013	5/8 NC Hex Nut	900-11017	3/4 Lock Washer
900-06015	3/4 NC Hex Nut	900-11019	7/8 Lock Washer
900-06017	7/8 NC Hex Nut	900-11021	1" Lock Washer
900-06019	1" NC Hex Nut	900-11023	1-1/8 Lock Washer
900-06023	1-1/4 NC Hex Nut	900-11025	1-1/4 Lock Washer
900-06025	1-3/8 NC Hex Nut	900-11029	1-1/2 Lock Washer
900-06027	1-1/2 NC Hex Nut		
900-06056	5/8 NF Slotted Hex Nut	900-11030	3/16 Flat Washer
900-06058	3/4 NF Slotted Hex Nut	900-11031	1/4 Flat Washer
900-06060	7/8 NF Slotted Hex Nut	900-11032	5/16 Flat Washer
900-06062	1" NF Slotted Hex Nut	900-11033	3/8 Flat Washer
900-06065	1-1/4 NC Slotted Hex Nut	900-11034	7/16 Flat Washer
900-06066	1-1/4 NF Slotted Hex Nut	900-11035	1/2 Flat Washer
900-06070	1-1/2 NF Slotted Hex Nut	900-11036	9/16 Flat Washer
		900-11037	5/8 Flat Washer
900-06135	1/4 NC Flanged Whiz Lock Nut	900-11038	3/4 Flat Washer
900-06137	5/16 NC Flanged Whiz Lock Nut	900-11039	7/8 Flat Washer
900-06139	3/8 NC Flanged Whiz Lock Nut	900-11040	1" Flat Washer
900-06141	7/16 NC Flanged Whiz Lock Nut	900-11041	1-1/8 Flat Washer
900-06143	1/2 NC Flanged Whiz Lock Nut	900-11042	1-1/4 Flat Washer
900-06145	5/8 NC Flanged Whiz Lock Nut	900-11044	1-1/2 Flat Washer
900-06270	3/8 NC Jam Nut		
900-06276	1/2 NC Jam Nut		
900-06280	5/8 NC Jam Nut		
900-06282	3/4 NC Jam Nut		
900-06284	7/8 NC Jam Nut		
900-06286	1" NC Jam Nut		
900-06288	1-1/8 NC Jam Nut		
900-06292	1-3/8 NC Jam Nut		
900-06496	1/4 NC Top Lock Nut		
900-06498	5/16 NC Top Lock Nut		
900-06500	3/8 NC Top Lock Nut		
900-06502	7/16 NC Top Lock Nut		
900-06504	1/2 NC Top Lock Nut		
900-06508	5/8 NC Top Lock Nut		
900-06510	3/4 NC Top Lock Nut		
900-06512	7/8 NC Top Lock Nut		
900-06514	1" NC Top Lock Nut		
900-06518	1-1/4 NC Top Lock Nut		

INDEX

Part Number	Page
320-1-0141	16
320-1-0141	18
320-1-0142	16
320-1-0142	18
320-2-1000	16
320-2-1000	18
320-2-1003	16
320-2-1003	18
320-2-1007	16
320-2-1007	18
320-2-1007	19
320-2-1009	16
320-2-1009	18
320-2-1009	19
320-2-1014	16
320-2-1014	18
320-2-1014	19
320-2-1015	16
320-2-1015	18
320-2-1015	19
320-2-1016	16
320-2-1016	18
320-2-1017	16
320-2-1017	18
320-2-1017	19
320-2-1018	16
320-2-1018	18
320-2-1018	19
320-2-1019	16
320-2-1019	18
320-2-1019	19
320-2-1020	16
320-2-1020	18
320-2-1020	19
320-2-1021	16

Part Number	Page
320-2-1021	18
320-2-1021	19
320-2-1022	16
320-2-1022	18
320-2-1022	19
320-2-1023	16
320-2-1023	18
320-2-1023	19
320-2-1168	16
320-2-1168	18
320-2-1168	19
320-2-1190	16
320-2-1190	18
320-2-1190	19
320-2-1255	16
320-2-1255	18
320-2-1255	19
320-2-1258	16
320-2-1258	18
320-2-1258	19
320-2-1259	16
320-2-1259	18
320-2-1259	19
320-2-1283	19
320-2-1287	19
320-2-1288	19
320-3-1052	16
320-3-1052	18
320-3-1052	19
320-3-1053	16
320-3-1053	18
320-3-1053	19
320-3-1060	16
320-3-1060	18
320-3-1060	19

Part Number	Page
320-3-1065	16
320-3-1065	18
320-3-1065	19
320-3-1071	16
320-3-1071	18
320-3-1075	16
320-3-1075	18
320-3-1075	19
320-3-1078	16
320-3-1078	18
320-3-1078	19
320-3-1079	16
320-3-1079	18
320-3-1090	16
320-3-1090	18
320-3-1090	19
320-3-1092	16
320-3-1092	18
320-3-1092	19
320-3-1092	24
320-3-1214	16
320-3-1214	18
320-3-1214	19
320-3-1264	13
320-3-1265	13
320-3-1266	13
320-3-1267	13
320-3-1268	13
320-3-1269	13
320-3-1270	13
320-3-1271	13
320-3-1274	13
320-3-1275	13
320-3-1277	16
320-3-1277	18

INDEX

Part Number	Page
320-3-1277	19
320-3-1295	16
320-3-1295	18
320-3-1295	19
320-3-1568	16
320-3-1568	18
320-3-1568	19
320-3-1590	16
320-3-1590	18
320-3-1590	19
320-3-1703	16
320-3-1703	18
320-3-1703	19
320-3-1704	16
320-3-1704	18
320-3-1704	19
320-3-1855	16
320-3-1855	18
320-3-1855	19
320-3-1856	16
320-3-1856	18
320-3-1856	19
320-3-1857	16
320-3-1857	18
320-3-1857	19
320-3-1946	19
320-3-1950	19
320-3-1958	13
320-3-1958	19
900-01013	16
900-01013	18
900-01013	19
900-01067	22
900-01067	24
900-01109	16

Part Number	Page
900-01109	18
900-01109	19
900-01117	16
900-01117	18
900-01117	19
900-01129	24
900-01223	16
900-01223	18
900-01223	19
900-01225	16
900-01225	18
900-01225	19
900-01229	16
900-01229	18
900-01229	19
900-01253	16
900-01253	18
900-01253	19
900-01339	16
900-01339	18
900-01339	19
900-01341	16
900-01341	18
900-01341	19
900-01361	16
900-01361	18
900-01361	19
900-01365	16
900-01365	18
900-01365	19
900-01804	16
900-01804	18
900-01804	19
900-06001	16
900-06001	18

Part Number	Page
900-06001	19
900-06005	16
900-06005	18
900-06005	19
900-06139	16
900-06139	18
900-06139	19
900-06143	16
900-06143	18
900-06143	19
900-06145	16
900-06145	18
900-06145	19
900-06498	22
900-06498	24
900-06500	24
900-06588	16
900-06588	18
900-06588	19
900-06592	16
900-06592	18
900-06592	19
900-06594	16
900-06594	18
900-06594	19
900-11009	16
900-11009	18
900-11009	19
900-11011	16
900-11011	18
900-11011	19
900-11015	16
900-11015	18
900-11015	19
900-11031	16

INDEX

Part Number	Page
900-11031	18
900-11031	19
900-11033	16
900-11033	18
900-11033	19
900-11035	16
900-11035	18
900-11035	19
900-11037	16
900-11037	18
900-11037	19
900-16030	24
900-16031	16
900-16031	18
900-16031	19
900-23025	16
900-23025	18
900-23025	19
900-25005	16
900-25005	18
900-25005	19
900-25012	16
900-25012	18
900-25012	19
901-01006	16
901-01006	18
901-01006	19
901-01308	16
901-01308	18
901-01308	19
903-03135	16
903-03135	18
903-03135	19
903-03142	16
903-03142	18

Part Number	Page
903-15615	24
903-15648	16
903-15648	18
903-15648	19
903-15649	16
903-15649	18
903-15649	19
903-18007	22
903-18016	22
903-18018	22
903-18033	24
903-18034	22
903-18035	22
903-18037	22
903-18039	22
903-18040	22
903-18041	22
903-18042	22
903-18043	22
903-18044	22
903-18057	19
903-18057	22
903-18058	19
903-18058	22
903-18072	22
903-18073	22
903-18074	22
904-05529	16
904-05529	18
904-05529	19
904-05529	23
904-06012	19
904-06012	23
904-06013	19
904-06013	23

Part Number	Page
904-08012	23
904-08049	16
904-08049	18
904-08049	19
904-08049	23
905-19003	16
905-19003	18
905-19003	19
905-19003	23
905-21209	16
905-21209	18
905-21209	19
905-21209	23
905-21230	23



701 Lenham Ave. - P.O. Box 647

Cooperstown, ND 58425

Office (701) 797-2700

Fax (701) 797-2584

Toll Free (800) 797-1883

www.sheyennemfg.com