

SHEYENNE TELE-SAW

MODEL 21

**OWNERS MANUAL
OPERATOR INSTRUCTIONS
PARTS BOOK**



701 Lenham Ave. - P.O. Box 647

Cooperstown, ND 58425

Office (701) 797-2700

Fax (701) 797-2584

Toll Free (800) 797-1883

www.sheyennemfg.com

Dear **SHEYENNE TELE-SAW** Owner/Operator,

Thank you for choosing the **SHEYENNE TELE-SAW**. You will find it a uniquely useful piece of equipment.

Please read and study this operator's manual completely before operating. Regular preventative maintenance and proper operation are the two most important ways to avoid costly downtime and major repairs. Included are regular maintenance steps and the safest operating techniques.

Please follow all safety instruction in this manual!

As manufacturer of the **SHEYENNE TELE-SAW**, it is our desire for every owner/operator to be a satisfied customer.

THANK YOU AGAIN FOR CHOOSING THE SHEYENNE TELE-SAW.

COMMERCIAL/INDUSTRIAL

TABLE OF CONTENTS

<u>DESCRIPTION</u>	<u>PAGE</u>
Customer Letter	1
Table of Contents	2
Tele-Saw Specifications	3
Safety Instructions	4
Attaching Tele-Saw to Tele-Boom	5-6
Operating Procedures	7-8
Maintenance	8
Long Term Storage	8
Trouble Shooting	9
Parts Section	10-33
Warranty	34

**OWNERS MANUAL & OPERATING INSTRUCTIONS
FOR MODEL #21 CHAIN SAW**

SPECIFICATIONS

BAR LENGTH	21”
CHAIN-PITCH	.404
CHAIN GAUGE	.063
CHAIN-TYPE TOOTH	CHISEL
CHAIN CONFIGURATION	STD
CHAIN MANUFACTURER	OREGON TYPE 27A
CHAIN TRAVEL	2880 FT/MIN
MOTOR PRESSURE	2500 PSI
MINIMUM MOTOR PRESSURE	1600 PSI
MOTOR FLOW	12 GPM
MOTOR SPEED	4000 RPM

SAFETY INSTRUCTIONS

1. READ OWNERS MANUAL BEFORE OPERATING
2. TO AVOID INJURY DUE TO FALLING OBJECTS, MAKE SURE ALL PERSONNEL ARE OUT OF THE WORK AREA
3. AVOID RAPID MOVEMENT OF TELE-BOOM
4. BEFORE SERVICING CHAIN SAW, LOWER TELE-BOOM ONTO A SUPPORT STAND, TURN OFF SKID STEER ENGINE AND REMOVE KEY FROM IGNITION
5. NEVER ATTEMPT TO ROTATE SAW UNLESS CHAIN GUIDE BAR IS FULLY RETRACTED INTO CHAIN BAR HOUSING
6. EXAMINE HYDRAULIC HOSES AND WIRING FOR CHAFFING ON A REGULAR SCHEDULE
7. ALWAYS CHECK CHAIN TENSION BEFORE OPERATING AND AT LEAST EVERY HOUR AFTER
8. SAW MUST NOT BE OPERATED WITHOUT CHAIN LUBRICATION SYSTEM FUNCTIONING PROPERLY. USE ONLY CHAIN SAW BAR OIL, DO NOT USE AUTOMOTIVE ENGINE OIL

ATTACHING TELE-SAW TO TELE-BOOM

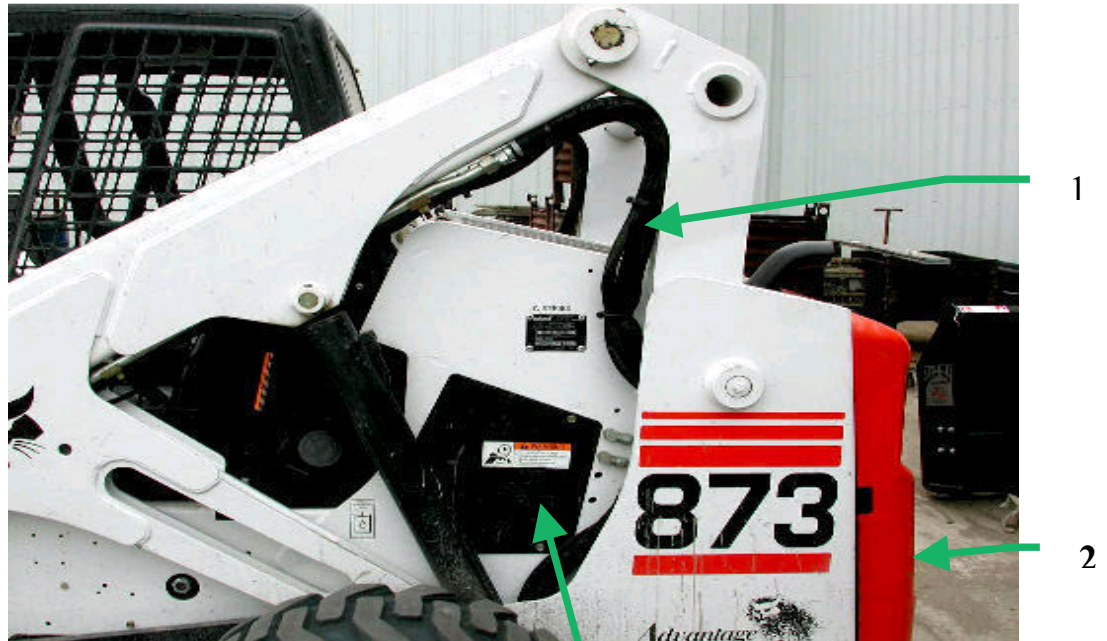


Figure 1.

STEP 1

- A. Run Universal wiring harness up the left arm of the skid steer, following the factory wiring harness (item #1). See figure 1.
- B. Open back tailgate (item #2) and run the Universal wiring harness to the access cover opening (item #3).
- C. Lift cab and take left front shield off which is located down by your left knee, if equipped, inside cab area. Run wiring harness through the left side forward into cab.
- D. Plug your foot switch into the universal harness and mount it above the skid steer's foot pedals. Plug the operators control handle into the Universal wiring harness.
- E. Wire in your ground and power. Splice power wire to any 12 volt power controlled by key switch. See figure 2. (items 1 & 2)
- F. Use cable ties to attach wiring harness to existing wiring harness.
- G. Put covers back on and bolt down cab.

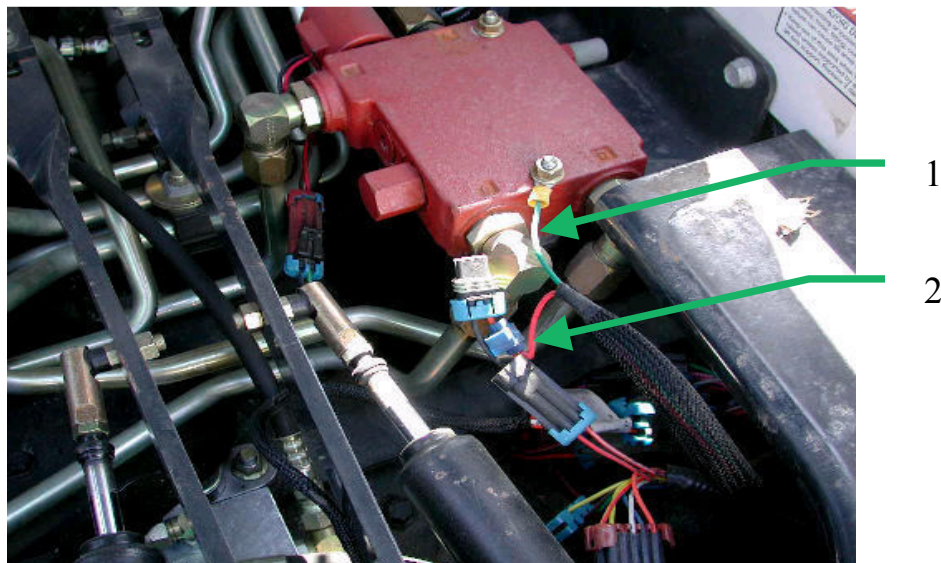


Figure 2.

STEP 2

- A. Attach Teleboom to skid steer. Connect electrical plug and hydraulic flat face connectors.

STEP 2

- A. Fully extend your Tele-Boom, attach the Tele-Saw to the end of the Tele-Boom with a 1/2" bolt and nut.

STEP 3 (Page 20)

- A. Connect Tele-Saw wiring harness #2 (item #4 page 12) into wiring harness #3 (item #7 page 20).
- B. Connect Tele-Saw hydraulic couplers to couplers on Tele-boom.

STEP 4

After checking everything over, refer to your operating section, start your skid steer, and check the operations of your Tele-Saw.

OPERATING PROCEDURES

1. Operator needs to be seated in the skid steer, have the safety bar lowered or the seatbelt buckled, or any other safety features engaged. Start the engine and activate the skid steer's systems, including hydraulic pressure to attachments. Skid steer controls and reactions to control operations vary considerably from model to model and to other makes or machines. Ideally a first-time tele-saw operator should be a proficient operator of that particular skid steer.
2. To extend or retract the tele-boom, depress the diverter control button (far right button on control handle toggles control between boom & saw) and operate the skid steer remote/attachment hydraulic control.
3. Lift the skid steer loader boom arms to desired height for cutting and best visibility.
4. Drive the skid steer forward to the work.
5. To switch to control of the Tele-saw, press the diverter control button. Starting & stopping the chain is done by trigger control on the skid steer or by holding the auxiliary hydraulic control button down. Skid steer engine rpm needs to be about half throttle for best chain speed.
6. When your saw is running the chain bar feed can be controlled two ways:
 - #1.) The two buttons at the bottom center of the control handle control the jog feed. Depressing and holding the right button advances the chain bar down. Releasing the button stops the chain bar at that position. This sequence of operations allows a "jog" or intermittent feed. To retract the bar, press the left button.
 - #2.) Chain bar feed can be done by using the foot switch. Depressing and holding the switch advances the chain bar down. Releasing it stops and automatically retracts the chain bar. This feature is particularly useful when cutting tree trunks horizontally, allowing the operator's hands free to control the skid steer and maintain lateral reaction pressure.
 - #3.) After each cut, the bar should be retracted into the bar housing by one of these methods and the chain should be stopped by a second pull of the skid steer trigger. The chain should only be running when necessary as the chain is only oiled when the bar is being advanced downward.
7. To rotate the tele-saw to desired angle, start the skid steer's hydraulics so the chain is running. **Note: the chain bar must be fully retracted!** The rotation function is locked-out if the bar is not retracted. The light at the far left of the control handle will be on when the bar is retracted. The two buttons at the upper center of the control handle operate rotation. The right button rotates the saw clockwise. The left button rotates the saw counter clockwise. Rotation range is approximately 350 degrees.

8. The chain is automatically oiled each time the chain bar is advanced or lowered. Continuous running in the same position will result in a dry chain and excessive chain wear.

MAINTENANCE

CHAIN – Check tension every day before work and every hour during work. After setting tension, chain should fit snugly against underside of bar. When sharpening chain, check for cracked links and damaged rivets. After sharpening, clean chain thoroughly, remove filings or grinding dust – lubricate the chain by immersing it in an oil bath. New chain should be immersed in oil overnight before installing.

BAR – Turn the bar over every time you sharpen the chain or every time you replace the chain. Check oil inlet hole, oil way and bar groove. Clean if necessary. Check bar groove for wear and damage.

DRIVE SPROCKET – Inspect drive sprocket whenever the saw chain is replaced. When the wear points measure 1/64” deep or more, replace the sprocket. Do not run old chain on a new sprocket or a new chain on an old sprocket. Use two new chains in rotation with each new sprocket so all can wear together.

HYDRAULIC HOSES – Inspect hydraulic hoses on a regular basis. Inspect for leaks, cuts and damaged fittings.

HYDRAULIC CYLINDER – Periodically inspect seals and fittings for leaks.

ELECTRICAL WIRING – Periodically inspect wiring for damage to insulation.

LONG TERM STORAGE

1. REMOVE CHAIN
2. CLEAN BAR GROOVE AND INSPECT RAILS
3. INSPECT CHAIN AND SHARPEN OR REPLACE
4. CLEAN ENTIRE SAW AND INSPECT FOR ANY DAMAGE OR EXCESSIVE WEAR
5. STORE IN ORIGINAL SHIPPING CONTAINER

TROUBLE SHOOTING

PROBLEM

SUGGESTED ACTION

SAW WILL NOT ROTATE

-SAW MUST BE RUNNING
-BAR MUST BE IN RETRACTED POSITION
-CIRCUIT PROTECTION MAY HAVE TRIPPED PRESS
-CHECK WIRING HARNESS CONNECTIONS
-GREEN INDICATOR LIGHT SHOULD BE ON

SAW WON'T RUN

-HYD HOSE CONNECTION MUST BE FULLY ENGAGED
-CHECK WIRING HARNESS CONNECTIONS
-CHECK HYDRAULIC SYSTEM OIL LEVEL

SAW WON'T CUT

-CHAIN MAY BE MOUNTED BACKWARDS
-ADJUST PRESSURE VALVE

SAW WON'T FEED

-SAW MUST BE RUNNING
-CIRCUIT PROTECTION MAY HAVE TRIPPED PRESS RESET
-HYD HOSES MUST BE CONNECTED CORRECTLY

BOOM WON'T EXTEND

-CHECK WIRES TO THE DIVERTER VALVE
-CIRCUIT PROTECTION MAY HAVE TRIPPED. PRESS RESET
-CHECK HYD SYSTEM OIL LEVEL

OILER DOES NOT WORK

-CHECK POWER SUPPLY TO THE HAND CONTROL BOX
-CHECK/FILL OIL IN TANK
-CHECK WIRE CONNECTION ON OILER PUMP
-WITH SKID STEER NOT RUNNING, TURN KEY ON – PRESS
DOWN FEED BUTTON – LISTEN FOR PUMP NOISE.

SAW STALLS – EVERYTHING
STOPS

-REDUCE PRESSURE ON PRESSURE VALVE

SAW FEEDS TOO FAST

-REDUCE FEED PRESSURE ON PRESSURE RELIEF VALVE
(SEE VIEW A, ITEM 13)

SAW FEEDS TOO SLOW

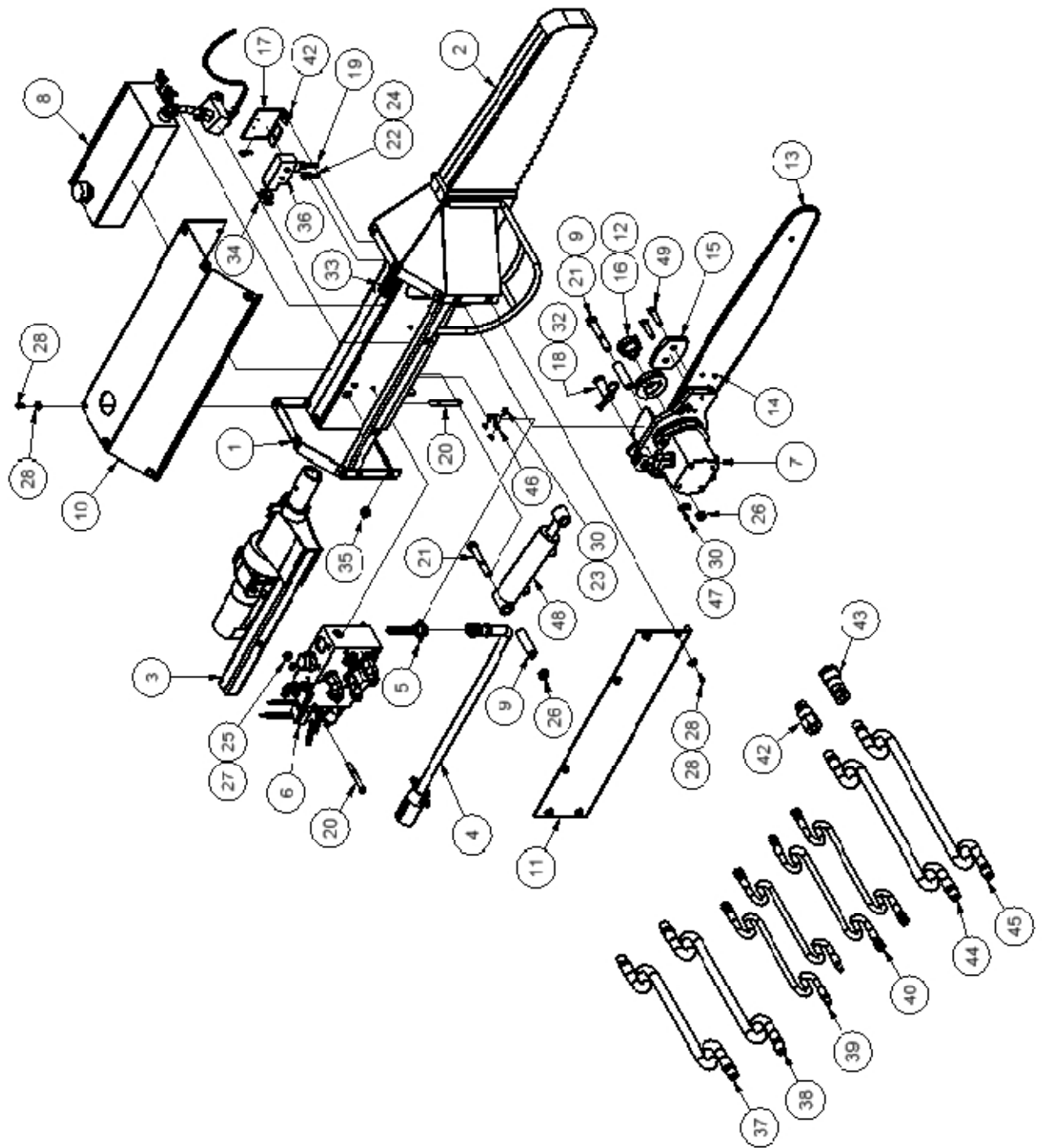
-INCREASE PRESSURE ON PRESSURE RELIEF VALVE
(SEE VIEW A, ITEM 13)

SAW BAR STALLS/BUT
CHAIN STILL RUNS

-INCREASE PRESSURE ON PRESSURE RELIEF VALVE

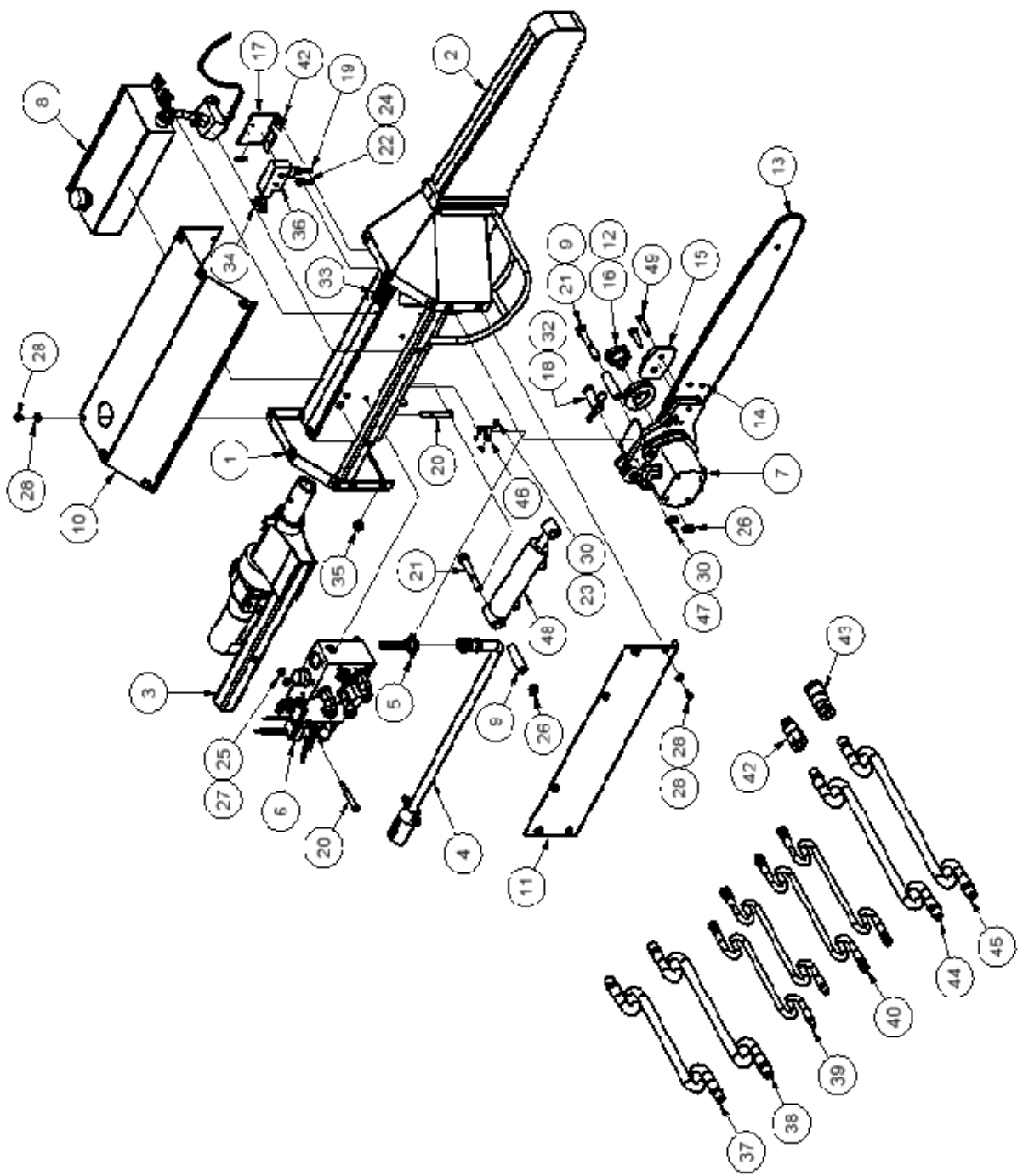
PARTS

SECTION



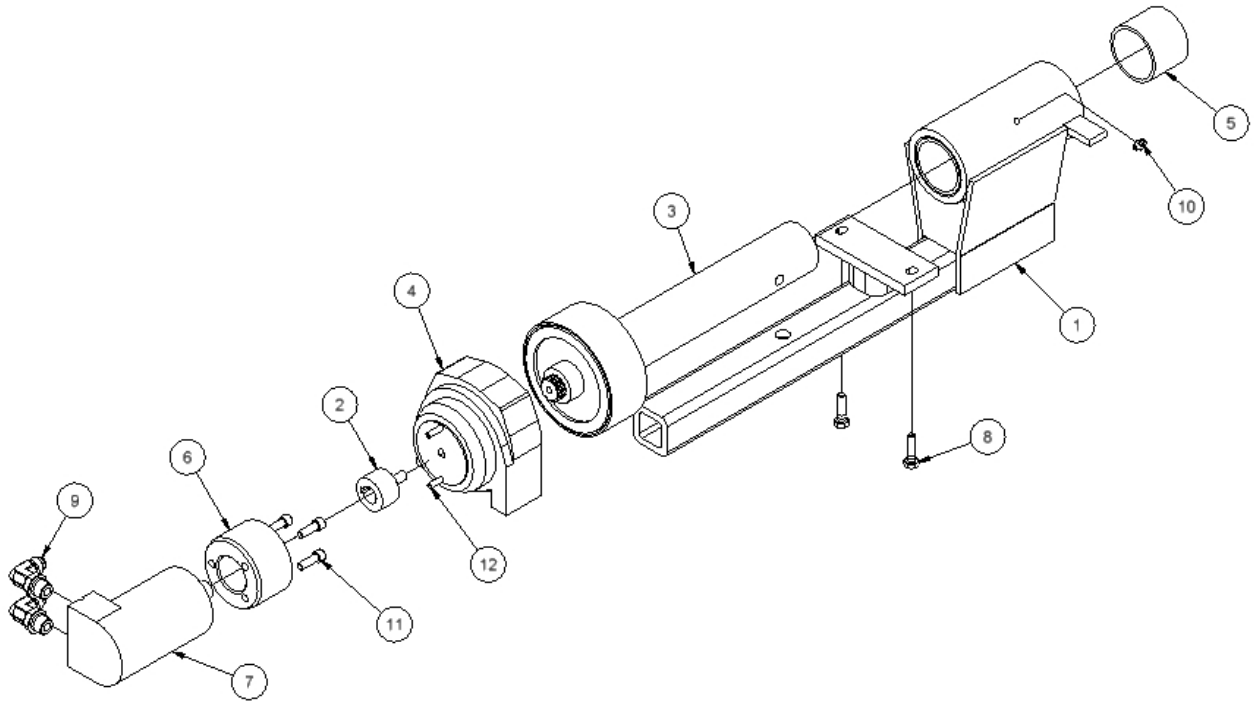
SAW MECHANICAL ASSEMBLY

ITEM	PART NUMBER	DESCRIPTION	QTY
1	170-UN04C	1/4NC U-CLIP NUT	12
2	303-2-1102	MAIN FRAME WELDMENT	1
3	303-2-1129	ROTATION ASSY	1
4	303-2-1135	WIRING HARNESS #2	1
5	303-2-1136	WIRING HARNESS #1	1
6	303-2-1143	HYD. BLOCK ASSY	1
7	303-2-1151	MOTOR DRIVE SUB ASSY	1
8	303-2-1161	TANK & CHAIN OILER ASSY	1
9	303-3-1106	HINGE BUSHING	2
10	303-3-1123	TOP SHIELD	1
11	303-3-1128	SIDE SHIELD	1
12	303-3-1140	CHAIN SPROCKET	1
13	303-3-1147	CUTTING CHAIN	1
14	303-3-1150	CUTTING BAR	1
15	303-3-1152	BAR HOLDDOWN PLATE	1
16	303-3-1154	HUB, CHAIN SPROCKET	1
17	303-3-1158	LIMIT SWITCH BRACKET	1
18	303-3-1242	CYLINDER PIN	1
19	303-3-1245	LIMIT SWITCH PLUNGER	1
20	900-01125	3/8 X 3 HEX BOLT	3
21	900-01239	1/2 X 3-1/4 HEX BOLT	2
22	900-02056	5/16 X 1-1/2 FULL THREAD HEX BOLT	1
23	900-05997	#10-24 HEX NUT	2
24	900-06268	5/16 NF JAM NUT	1
25	900-06270	3/8 JAM NUT	2
26	900-06277	1/2 JAM NUT	2
27	900-11011	3/8 LOCKWASHER	2
28	900-11031	1/4 FLAT WASHER	12
29	900-17604	6-32 X 3/4 PAN HD TAP SCREW	2
30	900-17608	#10-24 X 1/2 RND HD SCREW	4
31	900-17611	1/4 X 1 DRILL & TAP SCREW	1
32	900-25005	#9 R HITCH PIN	1
33	900-19022	6 PORT TERMINAL STRIP	1
34	900-19032	CORD STRAIN RELIEF	1
35	903-19067	RUBBER GROMMET, 3/4 X 1/2	1
36	903-19070	LIMIT SWITCH	1
37	904-05514	1/2" HOSE, 8MP-8MP-24.5"	1
38	904-05515	1/2" HOSE, 8MP-8MP-30.75"	1



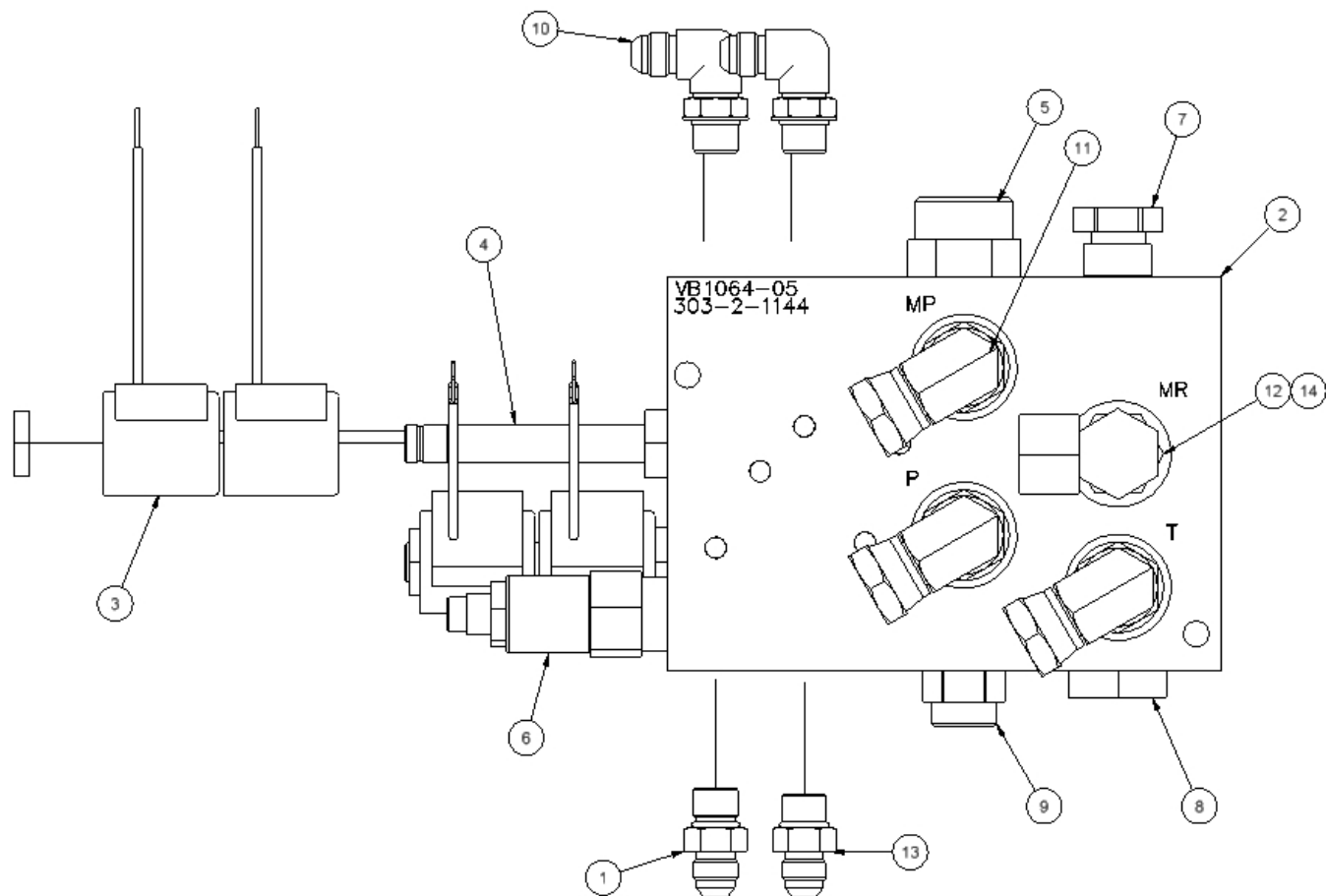
SAW MECHANICAL ASSY CONT.

	PART NUMBER	DESCRIPTION	QTY
39	904-05516	1/4 HOSE 6FJX-6FJX-17"	2
40	904-05517	1/4 HOSE 6FJX-6FJX-35"	2
41	904-05521	NEEDLE VALVE	1
42	904-05524	MALE FLAT FACE COUPLER	1
43	904-05525	FEMALE FLAT FACE COUPLER	1
44	904-06005	1/2 HOSE 8MP-8MP-127"	1
45	904-06006	1/2 HOSE 8MP-8MP-129"	1
46	904-08094	1/2" PIPE CLAMP	1
47	904-08095	1/4" P-CLIP	2
48	905-21206	HYD. CYLINDER	1
49	M10X40	10mm X 40mm HEX BOLT	2



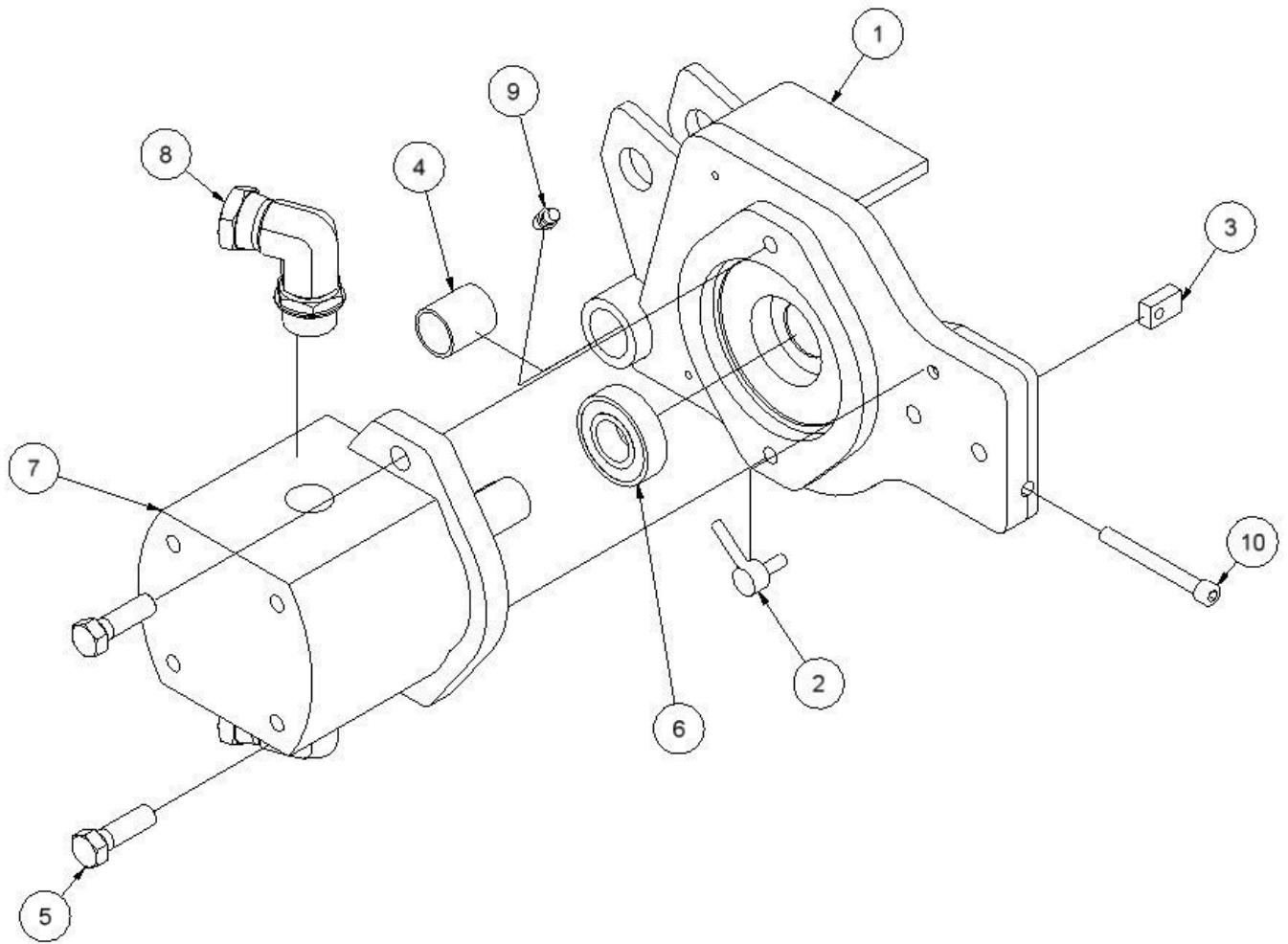
ROTATION ASSEMBLY

ITEM	PART NUMBER	DESCRIPTION	QTY
1	303-2-1106	PIVOT WELDMENT	1
2	303-2-1108	REDUCTION ADAPTER	1
3	303-2-1138	TORQUE LIMITER ASSY	1
4	303-2-1115	GEAR REDUCTION ASSY	1
5	303-3-1131	BRONZE BUSHING, 1.776 ID	2
6	303-3-1161	HUB	1
7	303-3-1243	HYD. MOTOR	1
8	900-01009	1/4 X 1 HEX BOLT	2
9	900-05510	ELBOW, 6MJ-6MB-90	2
10	905-15024	1/4-28 STRAIGHT GREASE ZERK	1
11	S8SH.25NFX.75	1/4 X 3/4 SOCKET HEAD CAP SCREW	3
12	S8SH10-32X.75	10-32 X 3/4 SOCKET HEAD CAP SCREW	2



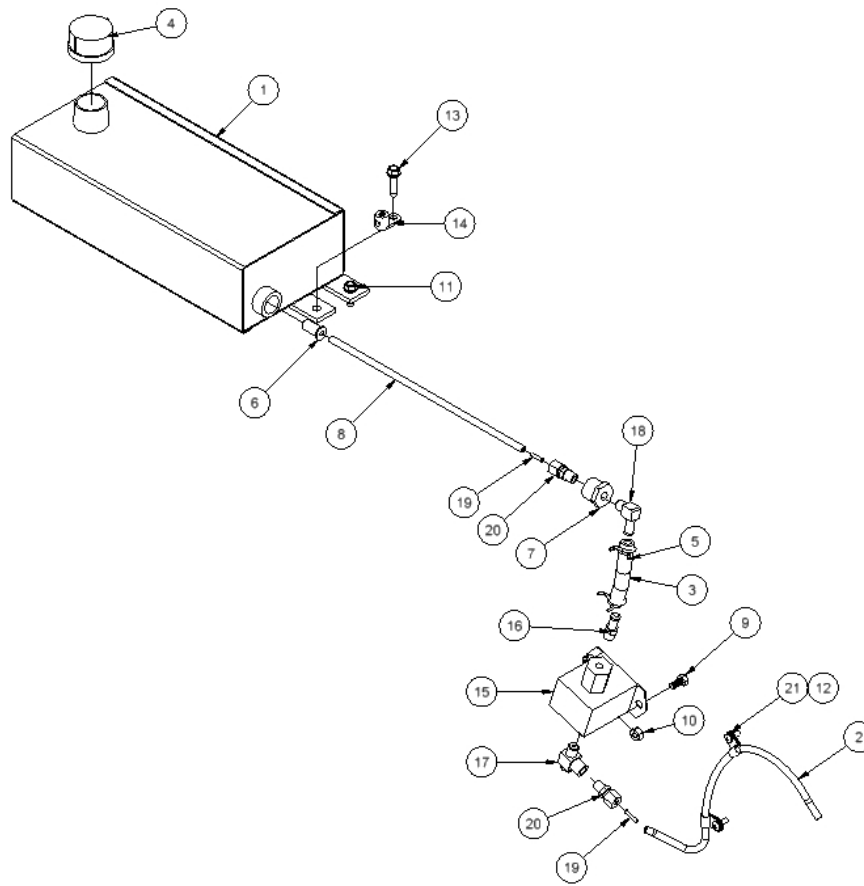
HYDRAULIC BLOCK ASSY

ITEM	PART NUMBER	DESCRIPTION	QTY
1	303-2-1142	ORIFICE ADAPTER, .040	1
2	303-2-1144	HYD. BLOCK SUB ASSY	1
3	904-05501	COIL	4
4	904-05502	DIRECTIONAL VALVE	2
5	904-05504	METERING VALVE	1
6	904-05505	ADJUSTABLE PRESSURE VALVE	1
7	904-05506	CHECK VALVE	1
8	904-05507	CHECK VALVE	1
9	904-05508	METERING VALVE	1
10	904-05510	ELBOW, 6MJ-6MB-90	2
11	904-05511	ELBOW, 10MB-8FPX-90	3
12	904-05512	ADAPTER, 10MB-8FPX	1
13	904-05513	ADAPTER, 6MJ-6MB	1
14	905-01329	ELBOW, 8MP-8FPX-90	1



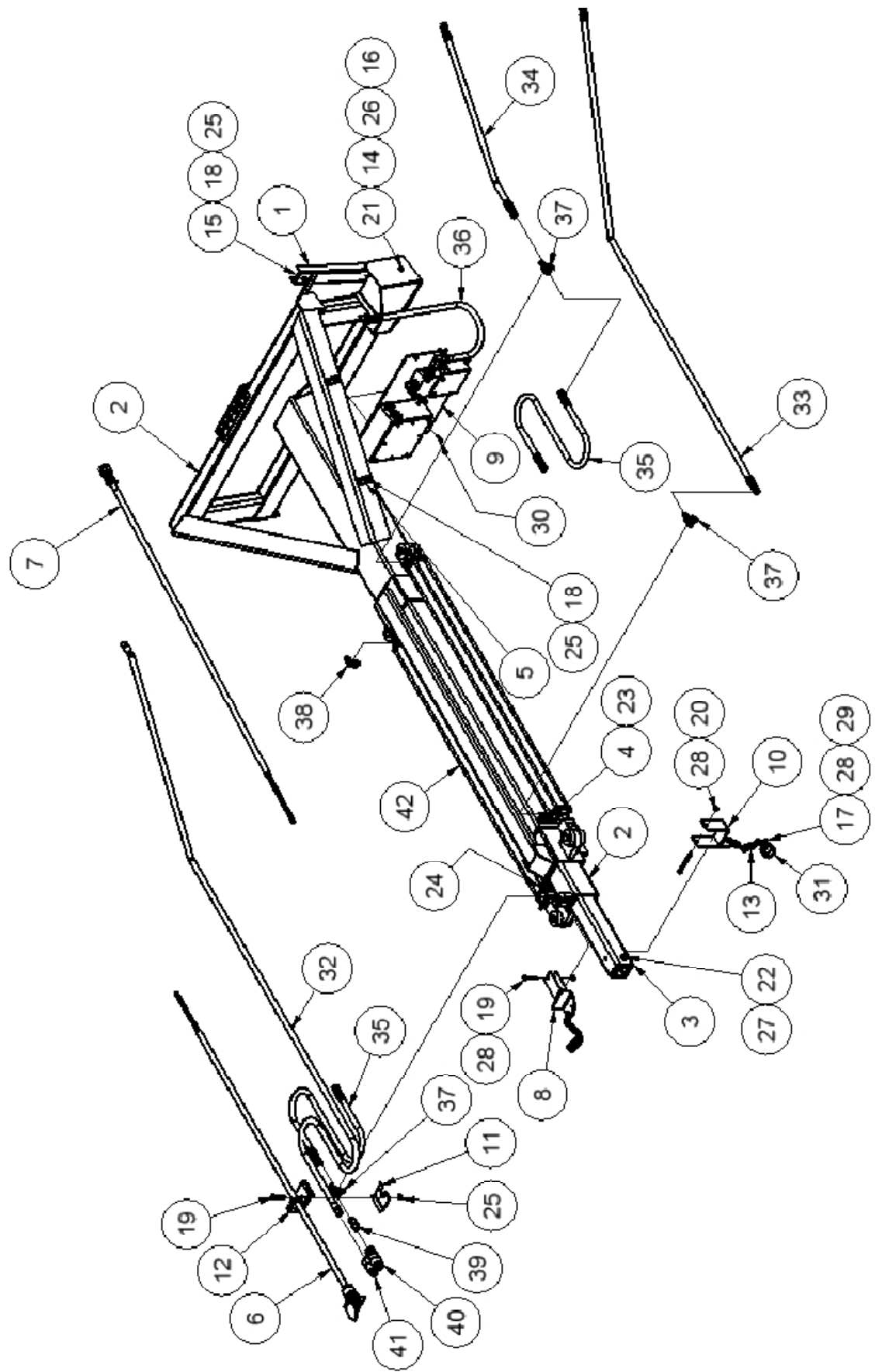
DRIVE MOTOR SUB ASSY

ITEM	PART NUMBER	DESCRIPTION	QTY
1	303-2-1101	MOTOR MOUNT WELDMENT	1
2	303-2-1149	OILER FITTING	1
3	303-3-1107	TIGHTENER TAB	1
4	303-3-1141	OILITE BUSHING .8755 OD X .752 ID X 1"	2
5	900-01111	3/8 X 1-1/4 HEX BOLT	2
6	901-01300	INSERT BEARING R12-2RS	1
7	904-05500	DRIVE MOTOR	1
8	904-05511	ELBOW, 10MB-8FPX-90	2
9	905-15024	1/4-28 STRAIGHT GREASE ZERK	1
10	S8SH.25X2.25	1/4 X 2-1/4 SOCKET HEAD CAP SCREW	1



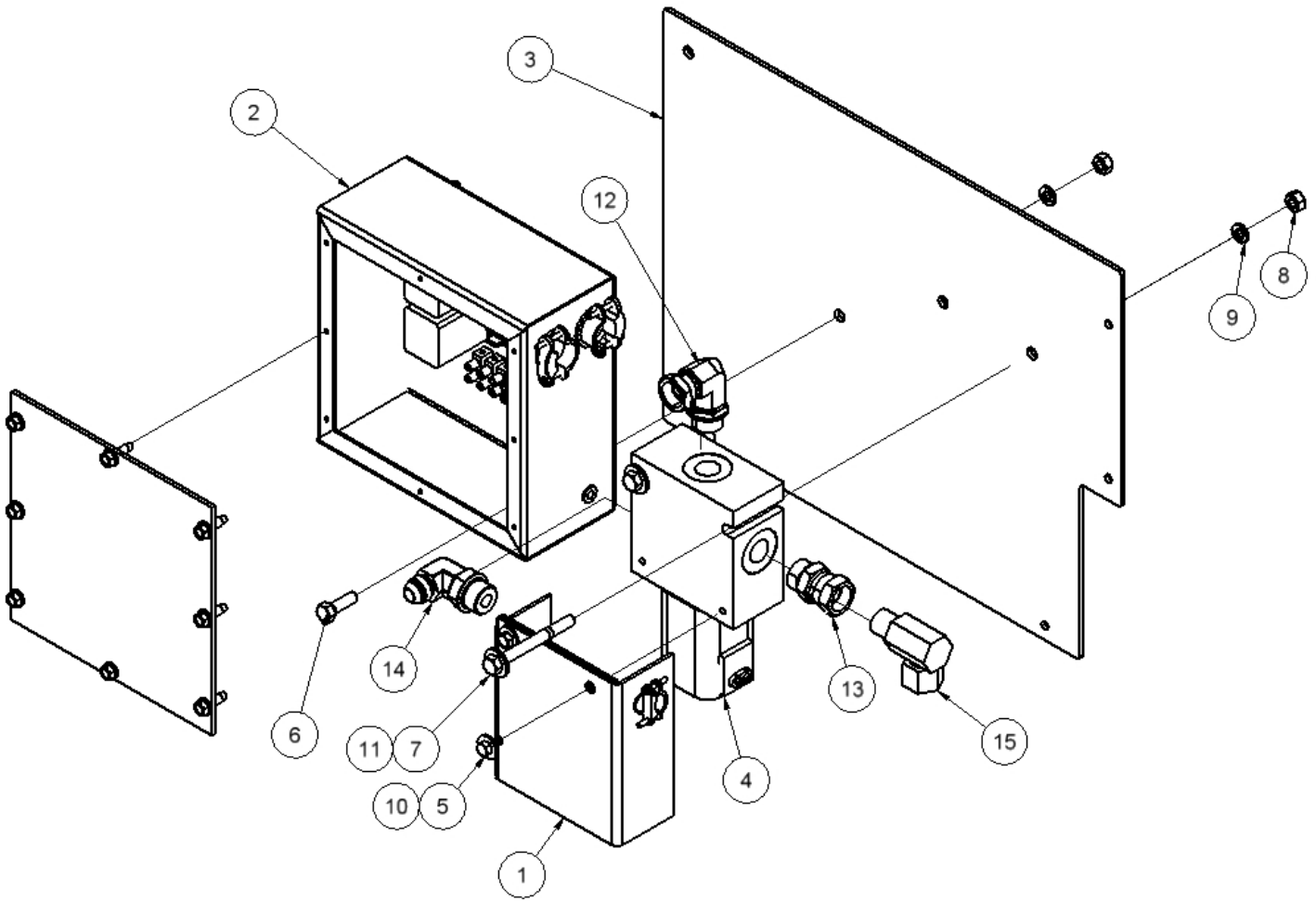
OILER ASSY

ITEM	PART NUMBER	DESCRIPTION	QTY
1	303-2-1105	OILER TANK WELDMENT	1
2	303-3-1155	OILER TUBE, 16"	1
3	303-3-1156	OIL TANK SUPPLY HOSE	1
4	303-3-1162	OIL TANK CAP	1
5	303-3-1164	SPRING HOSE CLAMP	2
6	303-3-1168	SPRAYER SCREEN	1
7	303-3-1244	HEX BUSHING	1
8	303-3-1246	OIL SUCTION TUBE	1
9	900-01001	1/4-20 X 1/2 HEX BOLT	2
10	900-06001	1/4-20 HEX NUT	2
11	900-17602	1/4 NC X 3/4 TAPPING SCREW	3
12	900-17608	#10-24 X 1/2 RD HD SCREW	2
13	900-17611	1/4 X 1 DRILL & TAP SCREW	1
14	903-19023	GROUND LUG	1
15	903-19028	ELEC. FUEL PUMP	1
16	904-05519	ADAPTER, 1/8MP-5/16 BARB	1
17	904-05521	NEEDLE VALVE ARO	1
18	904-08091	ELBOW, 1/8 MP-5/16 BARB-90	1
19	904-08092	BRASS INSERT	2
20	904-08093	COMPRESSION FITTING 1/8 MP X 1/4	2
21	904-08095	P-CLIP (METAL)	2



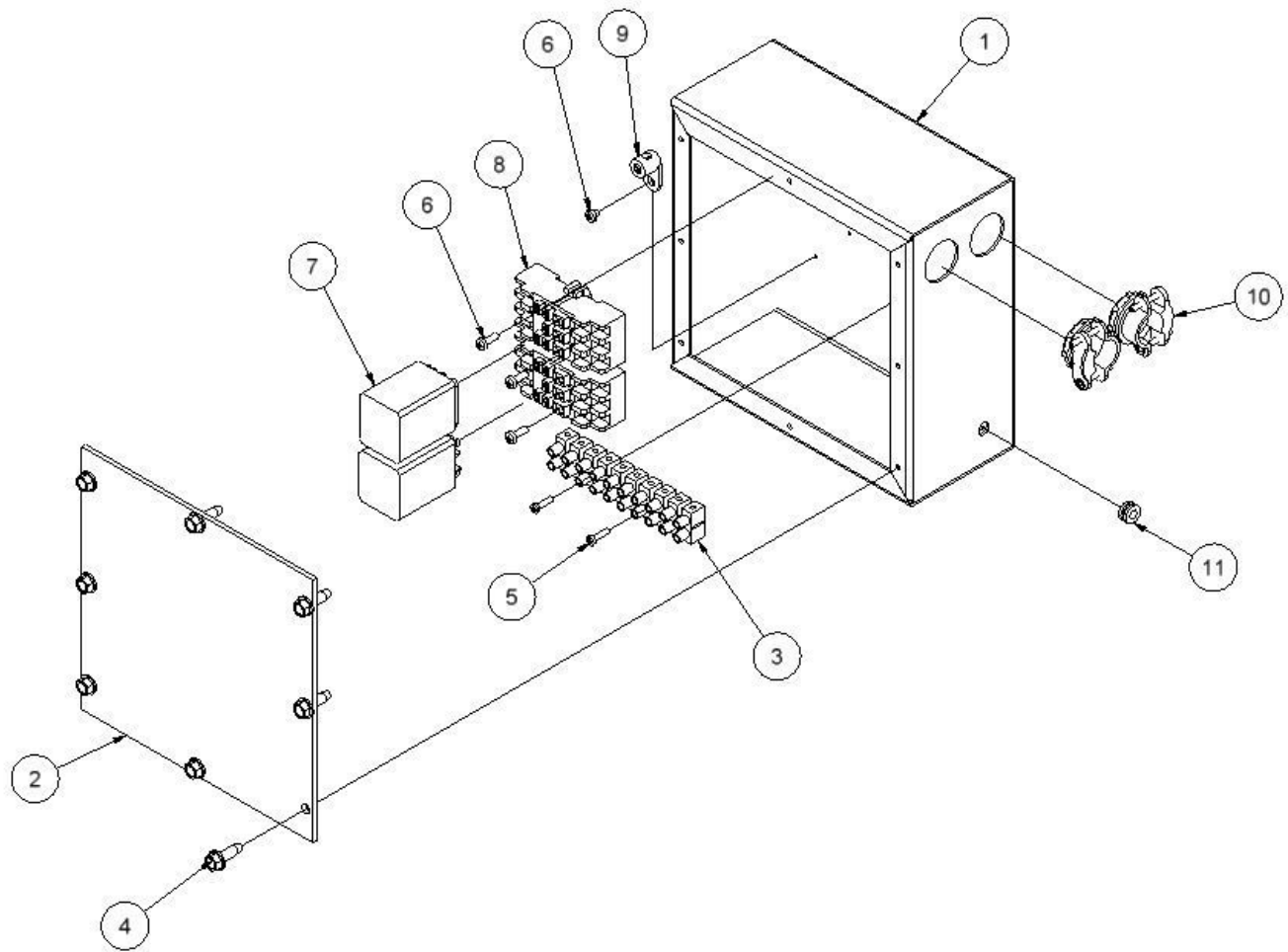
TELEBOOM ASSY

ITEM	PART NUMBER	DESCRIPTION	QTY
1	300-2-1011	HOSE SHIELD ARM WELDMENT	1
2	300-2-1017	T200 MAIN FRAME	1
	300-2-1007	T100 MAIN FRAME	1
3	300-2-1037	3" SQ TUBE WELDMENT (T-200)	1
	300-2-1001	2" SQ TUBE WELDMENT (T-100)	1
4	300-3-1150	CYLINDER BRACE	2
5	303-3-1175	HOSE CLAMP	2
6	303-2-1110	WIRE HARNESS #3	1
7	303-2-1111	WIRE HARNESS #4	1
8	303-2-1117	LOWER HOSE BRKT W/A	1
9	303-2-1131	DIVERTER/ELEC. BOX ASSY	1
10	303-2-1164	UPPER HOSE BRKT W/A (T-200)	1
	303-2-1116	UPPER HOSE BRKT W/A (T-100)	1
11	303-3-1151	CLAMP	1
12	303-3-1187	ELECTRICAL PLUG MOUNT	1
13	303-3-1247	HOSE GUIDE CHAIN	2
14	310-3-1150	BUSHING	1
15	310-3-1151	HOSE HOLD DOWN	2
16	310-3-1152	SPRING	1
17	900-01059	5/16 X 1 HEX BOLT	4
18	900-01063	5/16 X 1-1/2 HEX BOLT	4
19	900-01067	5/16 X 2 HEX BOLT	2
20	900-01083	5/16 X 4 HEX BOLT (T-200)	1
	900-01075	5/16 X 3 HEX BOLT (T-100)	1
21	900-01129	3/8 X 3-1/2 HEX BOLT	1
22	900-01241	1/2 X 3-1/2 HEX BOLT	1
23	900-03434	3/8 X 1/2 SERR. FLANGE BOLT	2
24	900-03436	3/8 X 3/4 SERR. FLANGE BOLT	2
25	900-06137	5/16 SERR FLANGE NUT	5
26	900-06139	3/8 SERR FLANGE NUT	3
27	900-06504	1/2 NC TOPLOCK NUT	1
28	900-06582	5/16 NYLON LOCKNUT	6
29	900-11032	5/16 FLAT WASHER	7
30	900-17602	1/4 X 3/4 TAPPING SCREW	4
31	903-19135	CABLE CLAMP 1-1/2 P	2
32	904-06007	1/2 HOSE, 8MP-8MP-146.5"	1
33	904-06041	1/2 HOSE, 8FJX-8FJX-123"	1
34	904-06112	1/2 HOSE, 8FJX-8FJX-36"	1
35	904-06043	1/2 HOSE, 8FJX-8FJX-59"	2
36	904-06111	1/2 HOSE, 8MP-8FJX-33"	1
37	904-08024	BRANCH TEE, 8MJ-8MJ-8MB	3
38	904-08025	ELBOW, 8MJ-8MB-90	1
39	904-08052	ADAPTER, 8MP-8FJX	1
40	905-19005	FEMALE FLAT FACE COUPLER 1/2"FP	1
41	905-19006	MALE FLAT FACE COUPLER 1/2 "FP	1
42	905-21212	HYD. CYLINDER 2 X 48	2



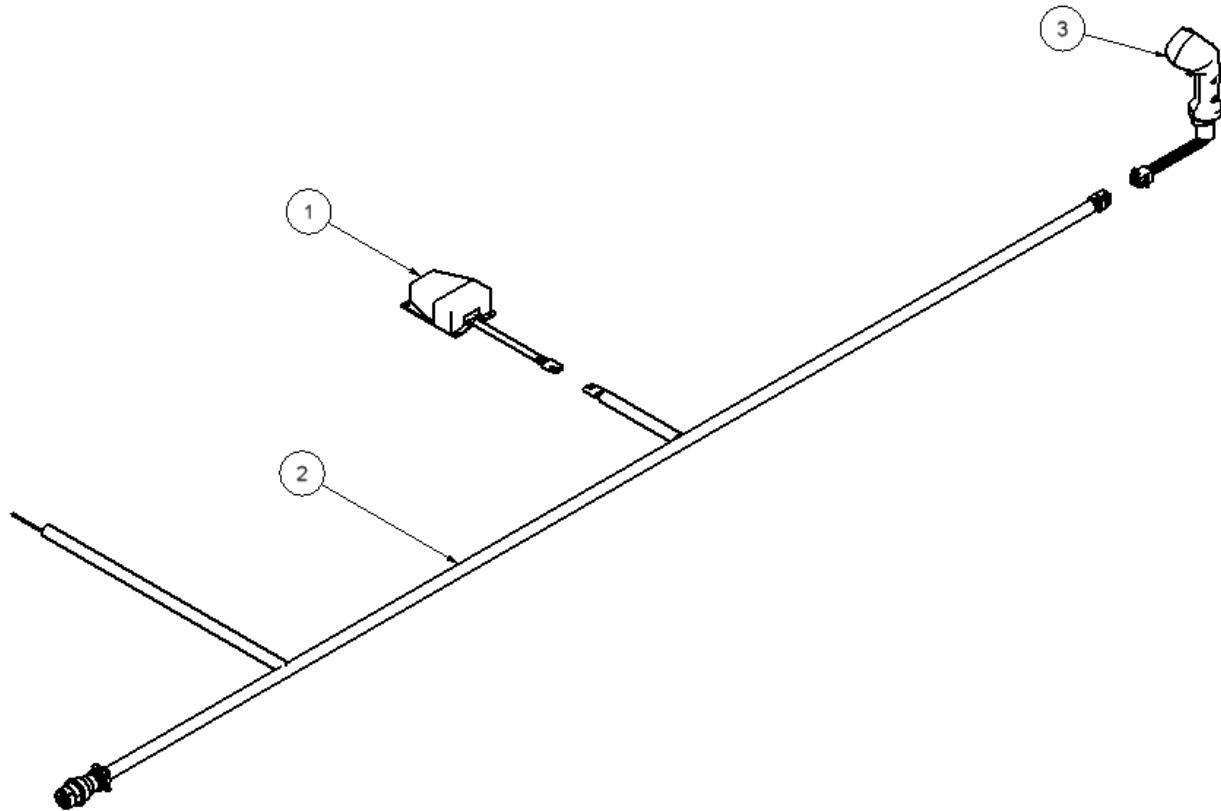
DIVERTER VALVE/ELECTRICAL BOX ASSY

ITEM	PART NUMBER	DESCRIPTION	QTY
1	303-2-1125	DIV. VALVE SHIELD W/A	1
2	303-2-1127	ELECTRICAL BOX ASSY	1
3	303-3-1210	DIVERTER MOUNT PLATE	1
4	303-3-1250	DIVERTER VALVE ASSY	1
5	900-01001	1/4 X 1/2 HEX BOLT	2
6	900-01059	5/16 X 1 HEX BOLT	2
7	900-01075	5/16 X 3 HEX BOLT	2
8	900-06003	5/16 HEX NUT	4
9	900-11010	5/16 LOCK WASHER	4
10	900-11031	1/4 FLAT WASHER	2
11	900-11032	5/16 FLAT WASHER	2
12	904-05511	ELBOW, 10MB-8FPX-90	1
13	904-05512	ADAPTER, 10MB-8FPX	1
14	904-08096	ELBOW, 8MJ-10MB-90	1
15	905-01329	ELBOW, 8MP-8FPX-90	1



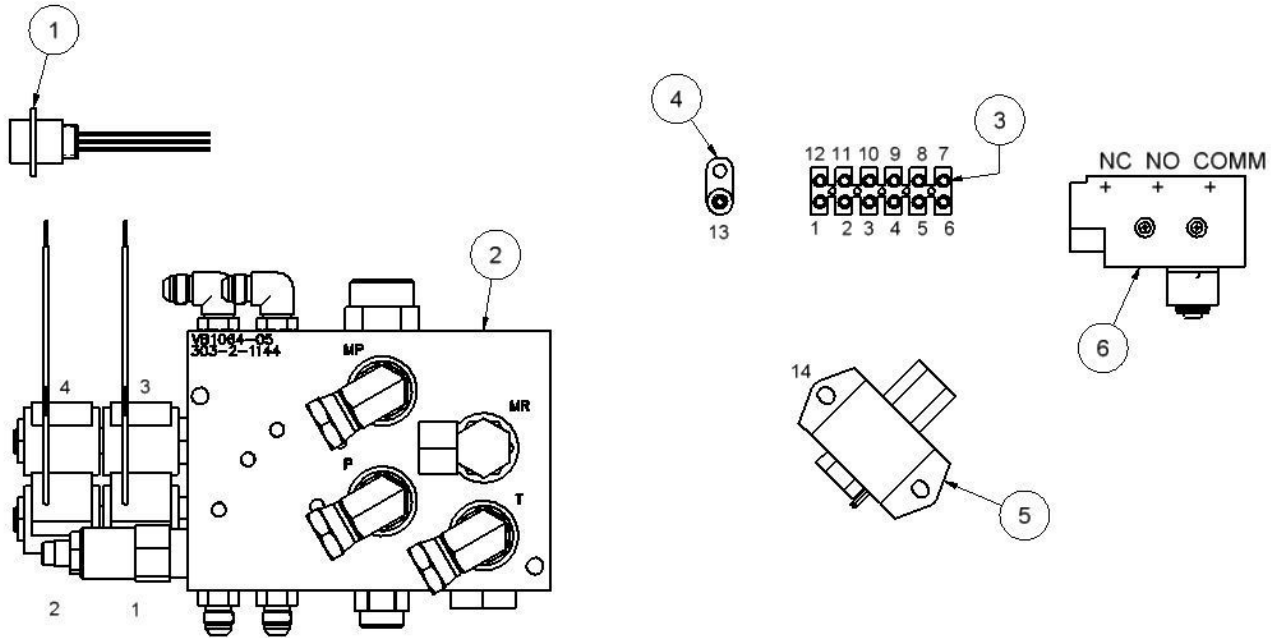
ELECTRICAL BOX ASSY

ITEM	PART NUMBER	DESCRIPTION	QTY
1	303-2-1107	ELECTRICAL BOX WELDMENT	1
2	303-3-1157	COVER	1
3	303-3-1249	TERMINAL BLOCK-10 PORT	1
4	900-17602	1/4 X 3/4 TAPPING SCREW	8
5	900-17604	6-32 X 3/4 PAN HEAD TAP SCREW	2
6	900-17606	8-32 X 3/4 PAN HEAD TAP SCREW	4
7	903-19016	RELAY	2
8	903-19017	RELAY SOCKET	2
9	903-19023	GROUND LUG	1
10	903-19027	CORD STRAIN RELIEF	2
11	903-19066	RUBBER GROMMET 1/4 X 3/8 X 3/32	1



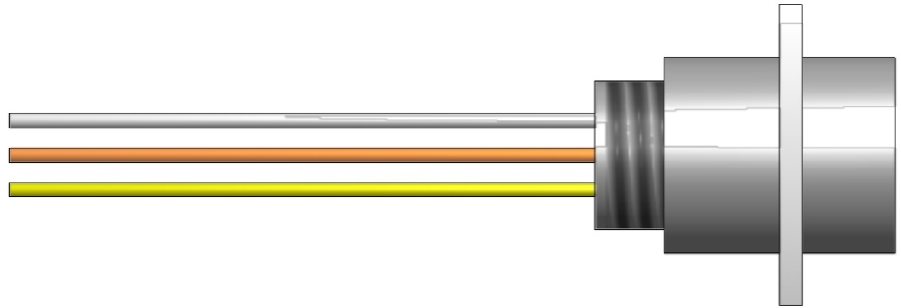
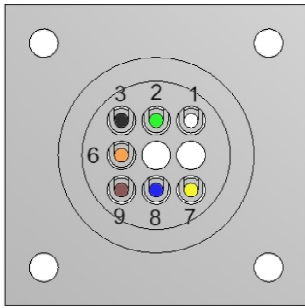
UNIVERSAL HARNESS ASSY

ITEM	PART NUMBER	DESCRIPTION	QTY
1	303-2-1126	FOOT PEDAL ASSY	1
2	303-2-1158	UNIVERSAL SKIDSTEER HARNESS	1
3	303-2-1163	CONTROL HANDLE HARNESS	1



SAW HOUSING WIRING SCHEMATIC

START LOCATION	TERMINATE LOCATION	WIRE COLOR
COIL #1	GROUND @13	RED
COIL #2	GROUND @13	RED
COIL #1	TERMINAL #1	RED
COIL #2	TERMINAL #2	RED
COIL #3	TERMINAL #3	RED
COIL #4	TERMINAL #4	RED
COIL #3	TERMINAL #6	RED
COIL #4	TERMINAL #6	RED
WIRE HARNESS #1	TERMINAL #7	WHITE
WIRE HARNESS #1	TERMINAL #8	BLACK
WIRE HARNESS #1	TERMINAL #9	BLUE
WIRE HARNESS #1	TERMINAL #10	YELLOW
WIRE HARNESS #1	TERMINAL #11	BROWN
WIRE HARNESS #1	TERMINAL #12	ORANGE
WIRE HARNESS #1	GROUND @13	GREEN
OIL PUMP	TERMINAL #1	RED
OIL PUMP	GROUND @14	BLACK
LIMIT SWITCH NC	TERMINAL #5	BLACK
LIMIT SWITCH NO	TERMINAL #7	WHITE
LIMIT SWITCH COMMON	GROUND @13	GREEN

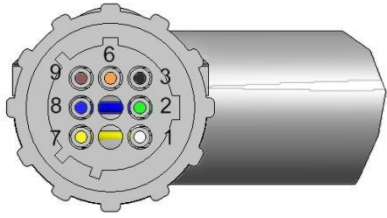


NOTE: THREADS FACING YOU

WIRING SCHEMATIC

(WIRE HARNESS #1)

WIRE COLOR	PORT #
WHITE	1
GREEN	2
BLACK	3
OPEN	4
OPEN	5
ORANGE	6
YELLOW	7
BLUE	8
BROWN	9

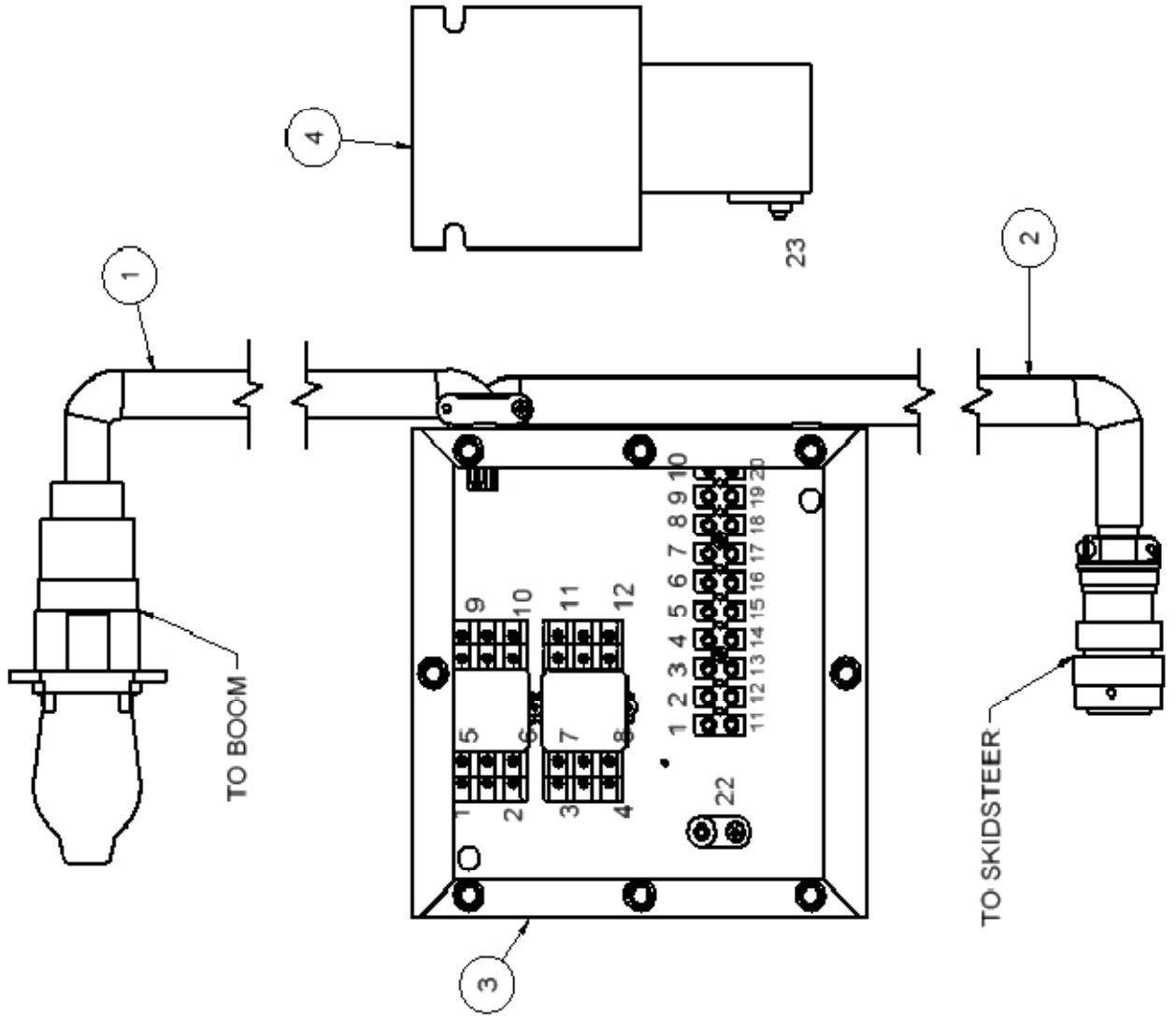


NOTE: MATCH WIRES TO COLOR CODE ON PLUG

WIRING SCHEMATIC

(WIRE HARNESS #2)

WIRE COLOR	PORT #
WHITE	1
GREEN	2
BLACK	3
OPEN	4
OPEN	5
ORANGE	6
YELLOW	7
BLUE	8
BROWN	9



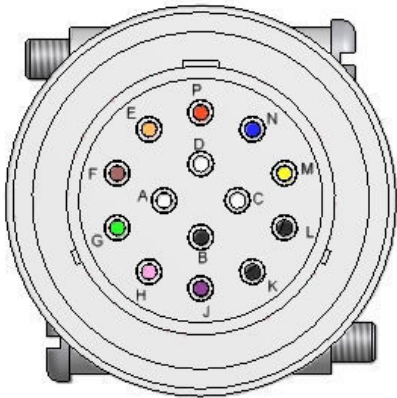
DIVERter VALVE WIRING SCHEMATIC

START LOCATION	TERMINATE LOCATION	WIRE COLOR
HARNESS #3	RELAY #10	ORANGE
HARNESS #3	TERMINAL #14	BLACK
HARNESS #3	TERMINAL #15	BROWN
HARNESS #3	TERMINAL #7	BLUE
HARNESS #3	TERMINAL #8	YELLOW
HARNESS #3	TERMINAL #9	WHITE
HARNESS #3	GROUND @22	GREEN
HARNESS #4	GROUND @22	GREEN
HARNESS #4	TERMINAL #11	RED
HARNESS #4	TERMINAL #12	PURPLE
HARNESS #4	TERMINAL #13	PINK
HARNESS #4	TERMINAL #16	BROWN
HARNESS #4	TERMINAL #17	BLUE
HARNESS #4	TERMINAL #18	YELLOW
HARNESS #4	TERMINAL #19	WHITE
HARNESS #4	TERMINAL #20	BLACK
HARNESS #4	RELAY #12	ORANGE
RELAY #1	RELAY #2	RED
RELAY #2	RELAY #3	RED
RELAY #3	TERMINAL #1	RED
RELAY #4	TERMINAL #3	PINK
RELAY #5	TERMINAL #2	PURPLE
RELAY #6	GROUND @22	GREEN
RELAY #7	RELAY #9	PURPLE
RELAY #7	RELAY #11	PINK
RELAY #8	TERMINAL #4	BLACK
RELAY #10	TERMINAL #6	ORANGE
RELAY #12	TERMINAL #5	BROWN
DIV. BLOCK @23	GROUND @22	GREEN
DIV. BLOCK @23	TERMINAL #10	RED



NOTE: MATCH WIRES TO COLOR
CODE ON PLUG

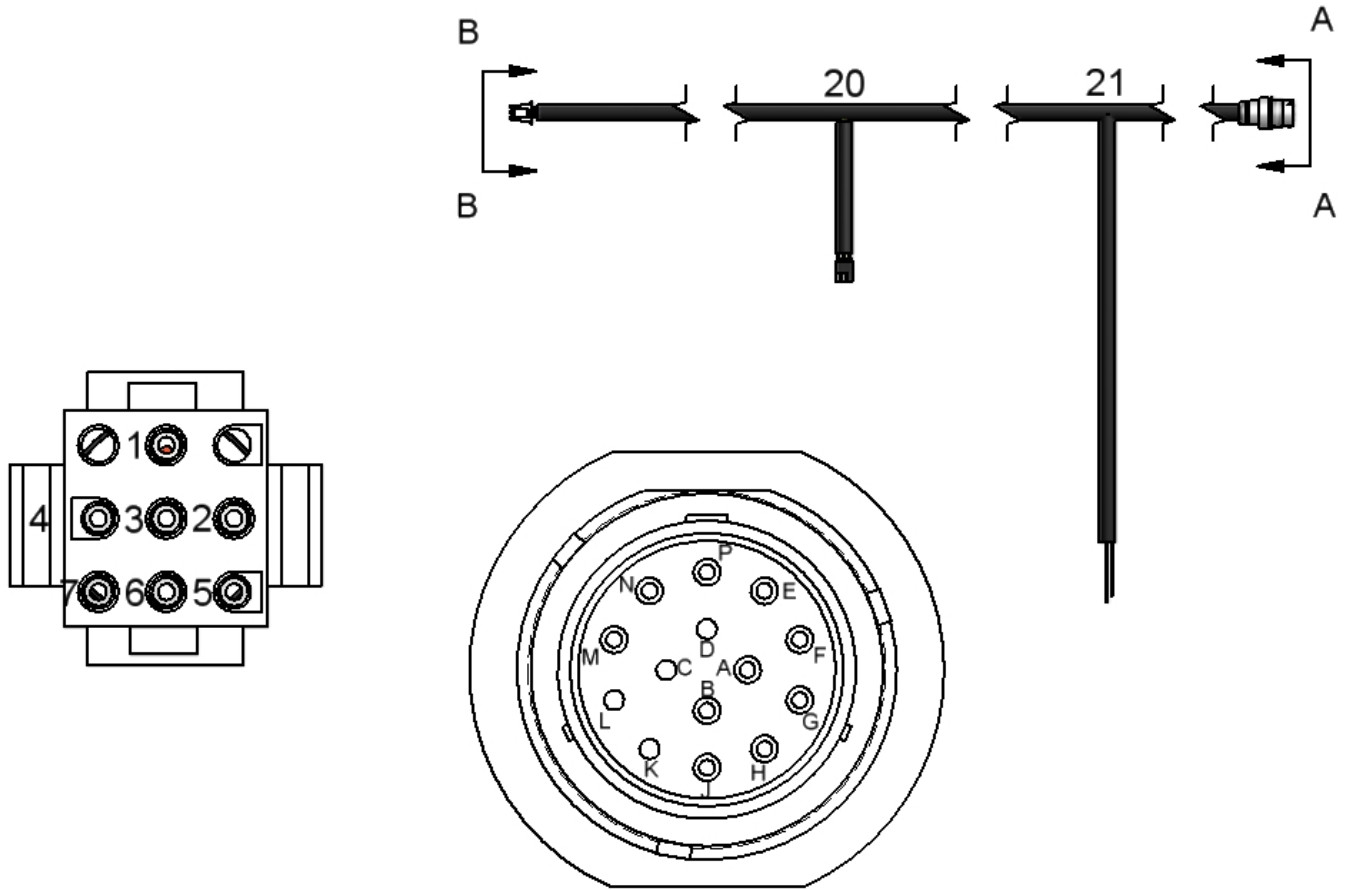
WIRE HARNESS #3 WIRING SCHEMATIC



WIRING SCHEMATIC

(WIRE HARNESS #2)

WIRE COLOR	PLUG LETTER
WHITE	A
BLACK	B
OPEN	C
OPEN	D
ORANGE	E
BROWN	F
GREEN	G
PINK	H
PURPLE	J
OPEN	K
OPEN	L
YELLOW	M
BLUE	N
RED	P

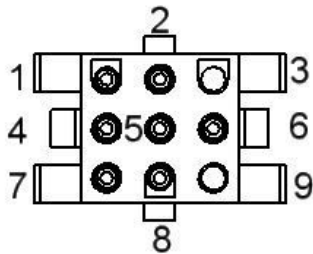


VIEW B-B

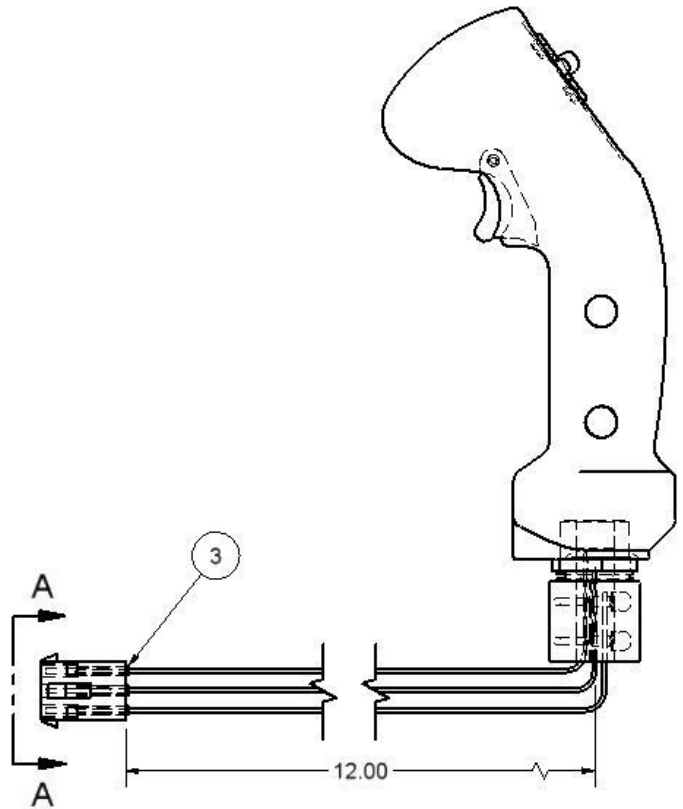
VIEW A-A

UNIVERSAL HARNESS WIRING SCHEMATIC

START LOCATION	TERMINATE LOCATION	WIRE COLOR
HD34 PLUG (A)	9 POLE PLUG (7)	WHITE
HD34 PLUG (B)	9 POLE PLUG (4)	BLACK
HD34 PLUG (E)	9 POLE PLUG (5)	ORANGE
HD34 PLUG (F)	9 POLE PLUG (2)	BROWN
HD34 PLUG (M)	9 POLE PLUG (6)	YELLOW
HD34 PLUG (N)	9 POLE PLUG (3)	BLUE
HD34 PLUG (P)	9 POLE PLUG (1)	RED
HD34 PLUG (G)	GROUND TO MACHINE	GREEN
HD34 PLUG (H)	3 POLE PLUG (GREEN)	PINK
HD34 PLUG (J)	3 POLE PLUG (YELLOW)	PURPLE
3 POLE PLUG (BROWN)	SPLICE TO RED WIRE @20	
SPLICE TO RED WIRE @21	KEYED POWER LINE ON SKIDSTEER	RED

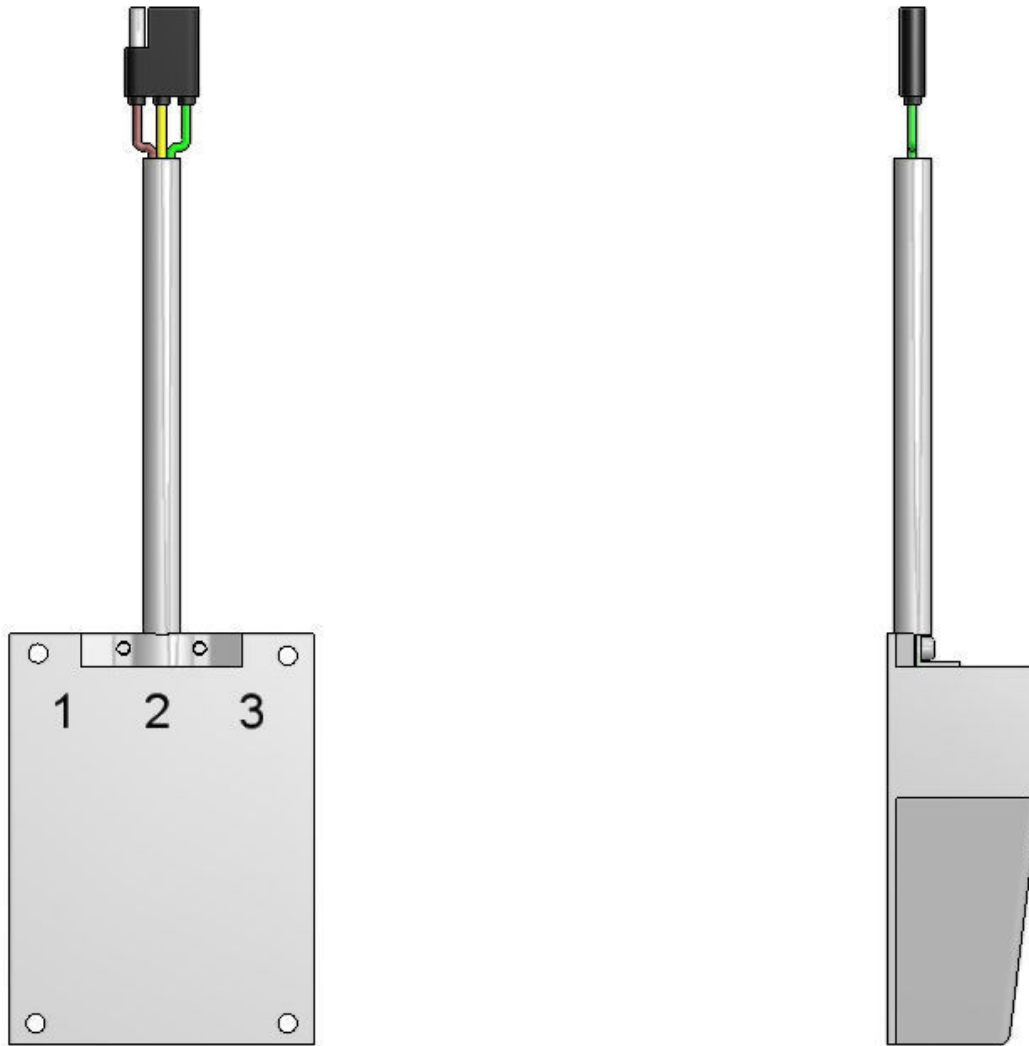


VIEW A-A
NOTE: LOOKING FROM FRONT SIDE OF PLUG



CONTROL HANDLE WIRING SCHEMATIC

START LOCATION	TERMINATE LOCATION	WIRE COLOR
L HANDLE	9 POLE PLUG (1)	ORANGE
L HANDLE	9 POLE PLUG (2)	BROWN
	9 POLE PLUG (3)	OPEN
L HANDLE	9 POLE PLUG (4)	YELLOW
L HANDLE	9 POLE PLUG (5)	BLUE
L HANDLE	9 POLE PLUG (6)	RED
L HANDLE	9 POLE PLUG (7)	WHITE
L HANDLE	9 POLE PLUG (8)	BLACK
	9 POLE PLUG (9)	OPEN



FOOT SWITCH WIRING SCHEMATIC

START LOCATION	TERMINATE LOCATION	WIRE COLOR
3 POLE PLUG	FOOT SWITCH #1—COMMON	BROWN
3 POLE PLUG	FOOT SWITCH #2—NORMAL OPEN	YELLOW
3 POLE PLUG	FOOT SWITCH #3—NORMAL CLOSED	GREEN

Please enter information below and SAVE FOR FUTURE REFERENCE

TELE-SAW WARRANTY

SHEYENNE TOOLING & MANUFACTURING warrants each new product to be free from defects in material and workmanship. This warranty is applicable only for the normal service life expectancy of the machine or components, not to exceed twelve consecutive months from the date of delivery of the new SHEYENNE TOOLING & MANUFACTURING product to the original purchaser.

Genuine SHEYENNE TOOLING & MANUFACTURING replacement parts and components will be warranted for 90 days from date of purchase, or the remainder of the original equipment warranty period, whichever is longer.

Under no circumstances will it cover any merchandise or components thereof, which in the opinion of the company, has been subject to negligent handling, misuse, alteration, an accident, or if repairs have been made with parts other than those obtainable through SHEYENNE TOOLING & MANUFACTURING.

The company in no way warrants engines, batteries, tires or other trade accessories since these items are warranted separately by their respective manufacturers.

Our obligation under this warranty shall be limited to repairing or replacing, free of charge to the original purchaser, any part that in our judgment shall show evidence of such defect, provided further that such part shall be returned within thirty (30) days from date of failure to SHEYENNE TOOLING & MANUFACTURING.

This warranty shall not be interpreted to render us liable for injury or damages of any kind or nature to person or property.

Except as set forth above, **SHEYENNE TOOLING & MANUFACTURING shall have no obligation of liability of any kind on account of any of its equipment and shall not be liable for special or consequential damage. SHEYENNE TOOLING & MANUFACTURING makes no other warranty, express or implied, and, specifically, SHEYENNE TOOLING & MANUFACTURING disclaims any implied warranty of merchantability of fitness for a particular purpose. Some states or provinces do not permit limitations or exclusions of implied warranties of incidental or consequential damages, so the limitations or exclusions in this warranty may not apply.**

This warranty is subject to any existing conditions of supply, which may directly affect our ability to obtain materials or manufacture replacement parts.

SHEYENNE TOOLING & MANUFACTURING reserves the right to make improvements in design or changes in specifications at any time, without incurring any obligations to owners of units previously sold.

No one is authorized to alter, modify or enlarge neither this warranty nor the exclusions, limitations and reservations.

I have read and understand the above instructions and warranty. Please complete both copies. **Warranty is invalid until signed and dealer copy is returned to the dealer.**

Date Purchased _____

Dealership _____

Model Number _____

Serial Number _____

Customer Signature _____

Date _____

Dealer Signature _____

Date _____

Customer Copy

(Keep in this book)

Please enter information below and SAVE FOR FUTURE REFERENCE

TELE-SAW WARRANTY

SHEYENNE TOOLING & MANUFACTURING warrants each new product to be free from defects in material and workmanship. This warranty is applicable only for the normal service life expectancy of the machine or components, not to exceed twelve consecutive months from the date of delivery of the new SHEYENNE TOOLING & MANUFACTURING product to the original purchaser.

Genuine SHEYENNE TOOLING & MANUFACTURING replacement parts and components will be warranted for 90 days from date of purchase, or the remainder of the original equipment warranty period, whichever is longer.

Under no circumstances will it cover any merchandise or components thereof, which in the opinion of the company, has been subject to negligent handling, misuse, alteration, an accident, or if repairs have been made with parts other than those obtainable through SHEYENNE TOOLING & MANUFACTURING.

The company in no way warrants engines, batteries, tires or other trade accessories since these items are warranted separately by their respective manufacturers.

Our obligation under this warranty shall be limited to repairing or replacing, free of charge to the original purchaser, any part that in our judgment shall show evidence of such defect, provided further that such part shall be returned within thirty (30) days from date of failure to SHEYENNE TOOLING & MANUFACTURING.

This warranty shall not be interpreted to render us liable for injury or damages of any kind or nature to person or property.

Except as set forth above, **SHEYENNE TOOLING & MANUFACTURING shall have no obligation of liability of any kind on account of any of its equipment and shall not be liable for special or consequential damage. SHEYENNE TOOLING & MANUFACTURING makes no other warranty, express or implied, and, specifically, SHEYENNE TOOLING & MANUFACTURING disclaims any implied warranty of merchantability of fitness for a particular purpose. Some states or provinces do not permit limitations or exclusions of implied warranties of incidental or consequential damages, so the limitations or exclusions in this warranty may not apply.**

This warranty is subject to any existing conditions of supply, which may directly affect our ability to obtain materials or manufacture replacement parts.

SHEYENNE TOOLING & MANUFACTURING reserves the right to make improvements in design or changes in specifications at any time, without incurring any obligations to owners of units previously sold.

No one is authorized to alter, modify or enlarge neither this warranty nor the exclusions, limitations and reservations.

I have read and understand the above instructions and warranty. Please complete both copies. **Warranty is invalid until signed and dealer copy is returned to the dealer.**

Date Purchased _____

Dealership _____

Model Number _____

Serial Number _____

Customer Signature _____

Date _____

Dealer Signature _____

Date _____

Dealer Copy

(Dealer to remove this page and keep



701 Lenham Ave. - P.O. Box 647

Cooperstown, ND 58425

Office (701) 797-2700

Fax (701) 797-2584

Toll Free (800) 797-1883

www.sheyennemfg.com